



MARITIME INDUSTRY AUTHORITY
WEEKLY SUMMARY SITUATION REPORT - Summary 65
 Passenger and Cargo Shipping Operations on June 11-17, 2021
 in areas under MGCQ and GCQ

Data generated on June 11-17, 2021, 3:00 PM

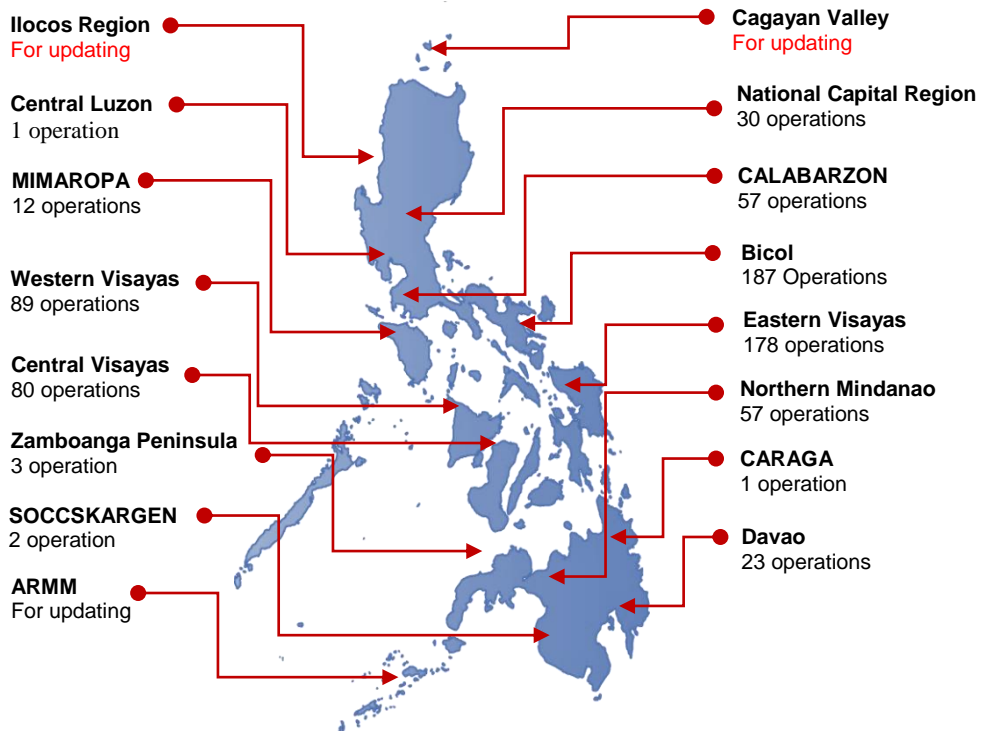
HIGHLIGHTS

- Ninety-one percent (91%) of passenger and cargo shipping operations were completed in accordance with the ships' CPC.
- Nine percent (9%) of the shipping operations were affected due to the measures implemented in view Code Red Sublevel 2 for the COVID-19.
- Operations of passenger ships were more affected compared to cargo ships. 99% of the cargo shipping operations were completed under normal conditions compared to passenger ships at 80%.
- Daily average passenger and cargo ship operations are 120 completed under normal conditions, 2 cancelled trips, 3 delayed and 0 not completed voyage.
- **With cargo shipping still operational, transport of goods amid MGCQ, and GCQ is assured.**

PASSENGER AND CARGO SHIPPING IN NUMBERS
 June 11-17, 2021

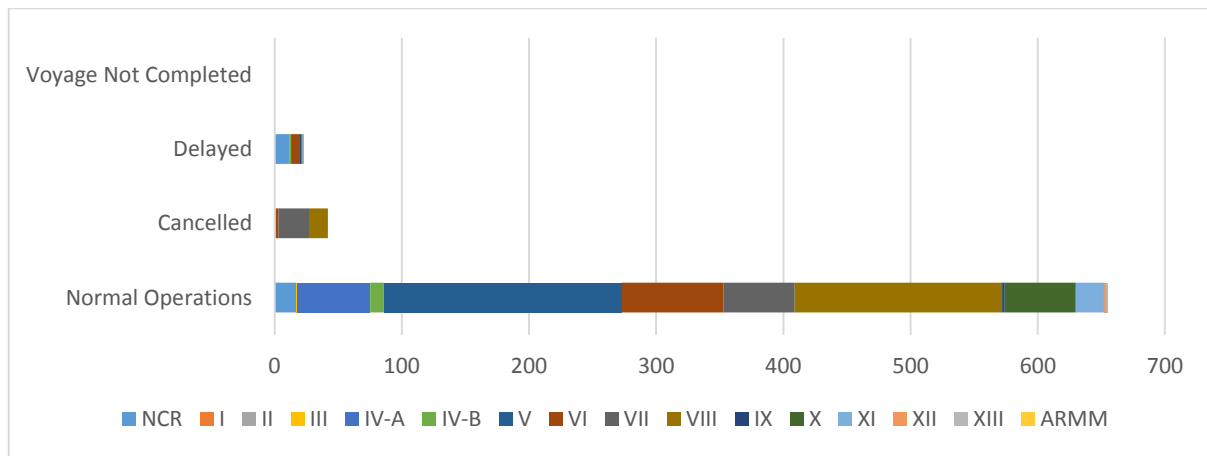
- 720** Shipping Operations Recorded
- 306** Passenger Ships Operated
- 414** Cargo Ships Operated
- 655** Ships Operated Normally
- 42** Operations Cancelled
- 23** Operations Delayed
- 0** Operation Uncompleted

**PASSENGER AND CARGO SHIPPING OPERATIONS IN THE PHILIPPINES
 IN AREAS UNDER MGCQ and GCQ**



Total of 720 Passenger and Cargo Shipping Operations

I. STATUS OF SHIPPING OPERATIONS NATIONWIDE



On June 11-17, 2021, there were 720 passenger and cargo shipping operations conducted wherein 655 or 91% were completed in accordance with their Certificate of Public Convenience (CPC).

Out of the 655 operations completed under normal conditions, the reported movements were mostly in the Eastern Visayas Region at 29% and Bicol Region at 25%.

Meanwhile, 6% of the passenger and cargo shipping operations were cancelled, all due to the community quarantine measures imposed by the different local government units governing the ships' ports of destination. Mostly affected were operations in the Central Visayas and Eastern Visayas Regions.

Twenty (20) passenger ships or 7% encountered delays due to the additional measures adopted in view of COVID-19 such as temperature screening and inspections.

Lastly, no shipping operations were not completed at the time of reporting, as the respective ships were still underway.

II. STATUS OF SHIPPING OPERATIONS BY CLASSIFICATION

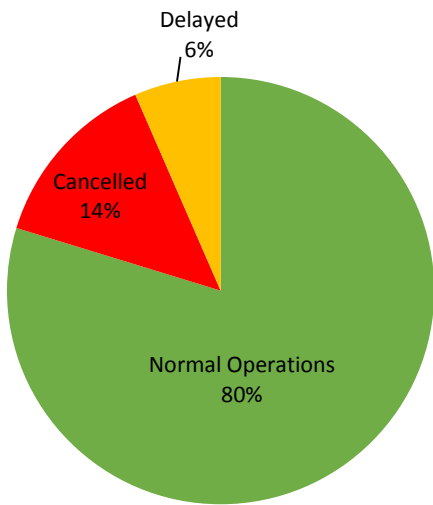
Region	Normal Operations		Cancelled		Delayed		Not Completed	
	Passenger	Cargo	Passenger	Cargo	Passenger	Cargo	Passenger	Cargo
NCR	4	13	1	-	10	2	-	-
I	-	-	-	-	-	-	-	-
II	-	-	-	-	-	-	-	-
III	-	1	-	-	-	-	-	-
IV-A	56	1	-	-	-	-	-	-
IV-B	9	2	-	-	1	-	-	-
V	25	162	-	-	-	-	-	-
VI	22	58	2	-	7	-	-	-
VII	33	23	24	-	-	-	-	-
VIII	89	74	15	-	-	-	-	-
IX	-	2	-	-	1	-	-	-
X	1	55	-	-	1	-	-	-
XI	4	18	-	-	-	1	-	-
XII	-	2	-	-	-	-	-	-
XIII	1	-	-	-	-	-	-	-
ARMM	-	-	-	-	-	-	-	-
Total	244	411	42	-	20	3	-	-

Amid the measures in place due to MGCQ, and GCQ, 411 out of 414 (99%) cargo ships still operated normally – are 13 bulk carrier, 30 container ships, 9 general cargo ships, 92 LCT ships, 30 oil tankers, 230 Roro cargo ships.

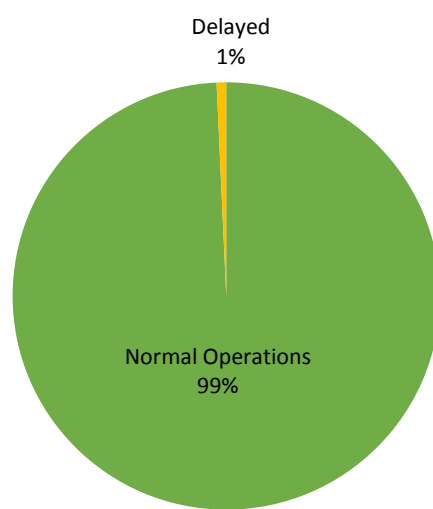
Three-hundred and forty-four (244) passenger ships completed their voyage – 128 conventional passenger ships, 62 RoPax ships and 54 fast craft ferry completed their operations but mostly only carried cargoes during their voyage.

Meanwhile out of the 306 passenger ships, 20% were affected by the measures adopted in view of COVID-19. These measures caused either the cancellation, delay, or uncompleted operations of 62 passenger ships.

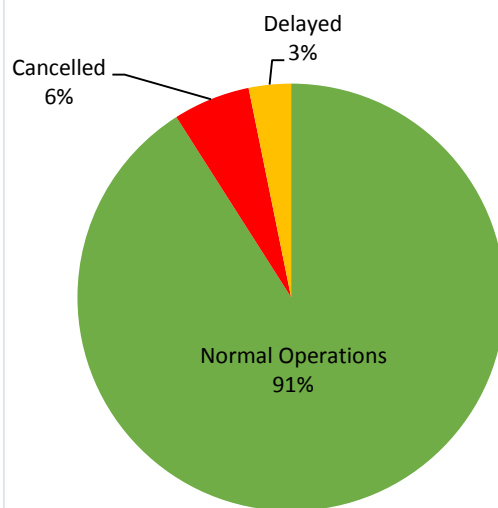
PASSENGER Ship Operations



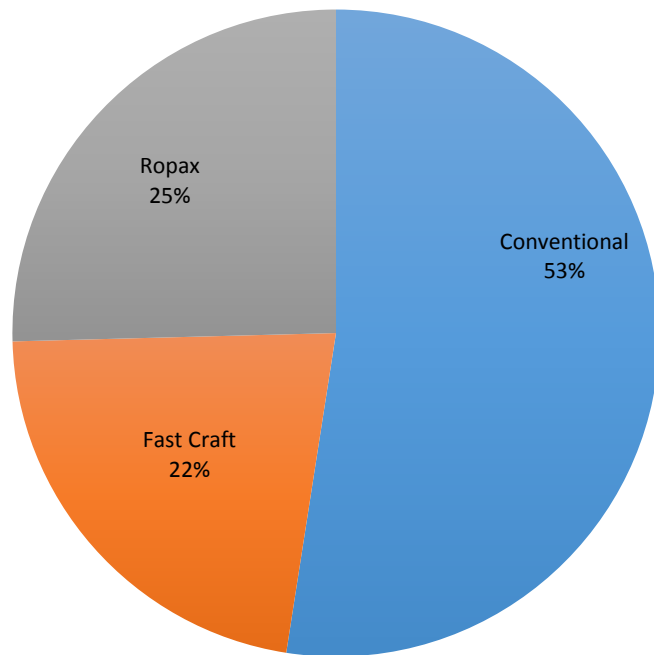
CARGO Ship Operations



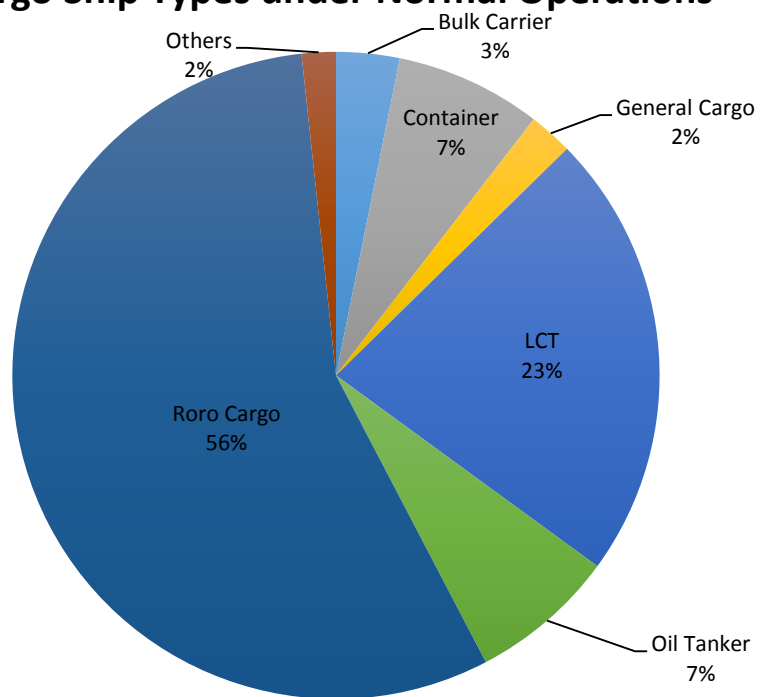
PASSENGER and CARGO Ship Operations



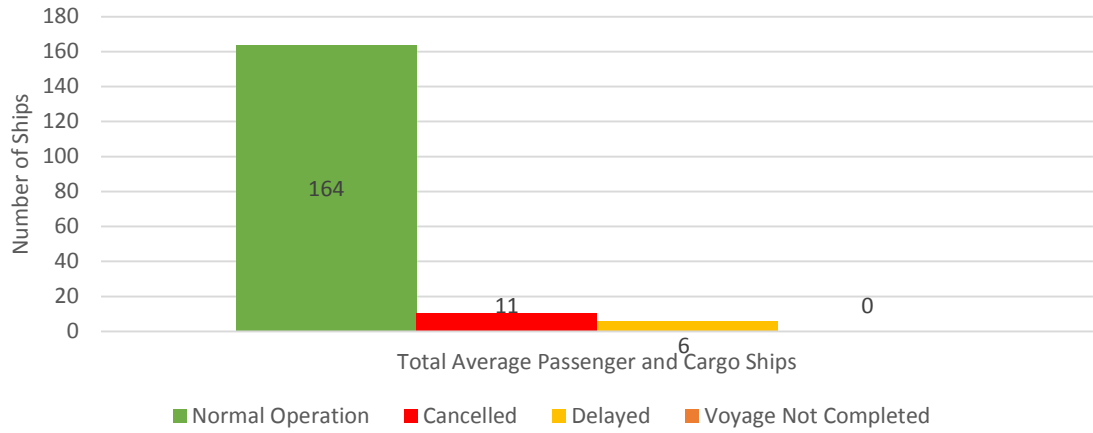
Passenger Ship Types under Normal Operations



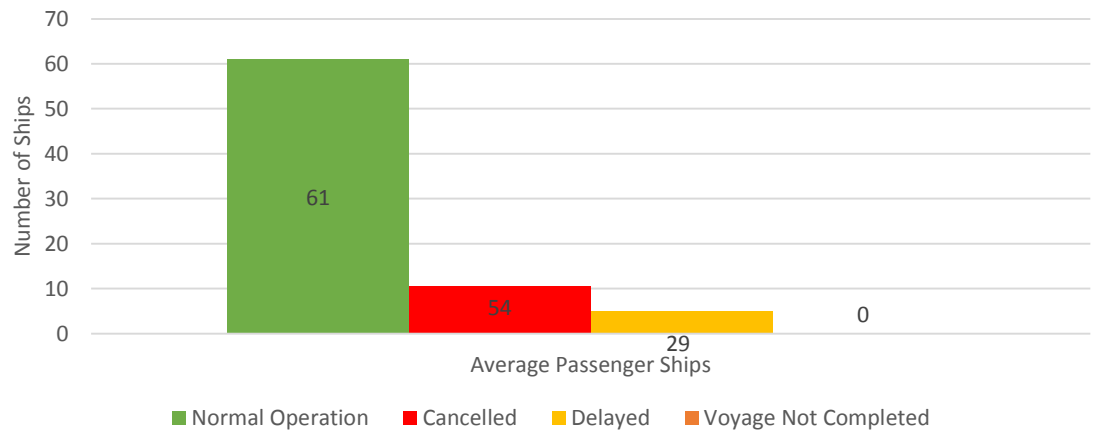
Cargo Ship Types under Normal Operations



Daily Average Passenger and Cargo Ship Operation



Daily Average Passenger Ship Operation



Daily Average Cargo Ship Operation

