



**MARITIME INDUSTRY AUTHORITY
WEEKLY SUMMARY SITUATION REPORT – Summary 63**

Passenger and Cargo Shipping Operations on May 28 – June 3, 2021
in areas under MGCQ and GCQ

Data generated on May 28 – June 3, 2021, 3:00 PM

HIGHLIGHTS

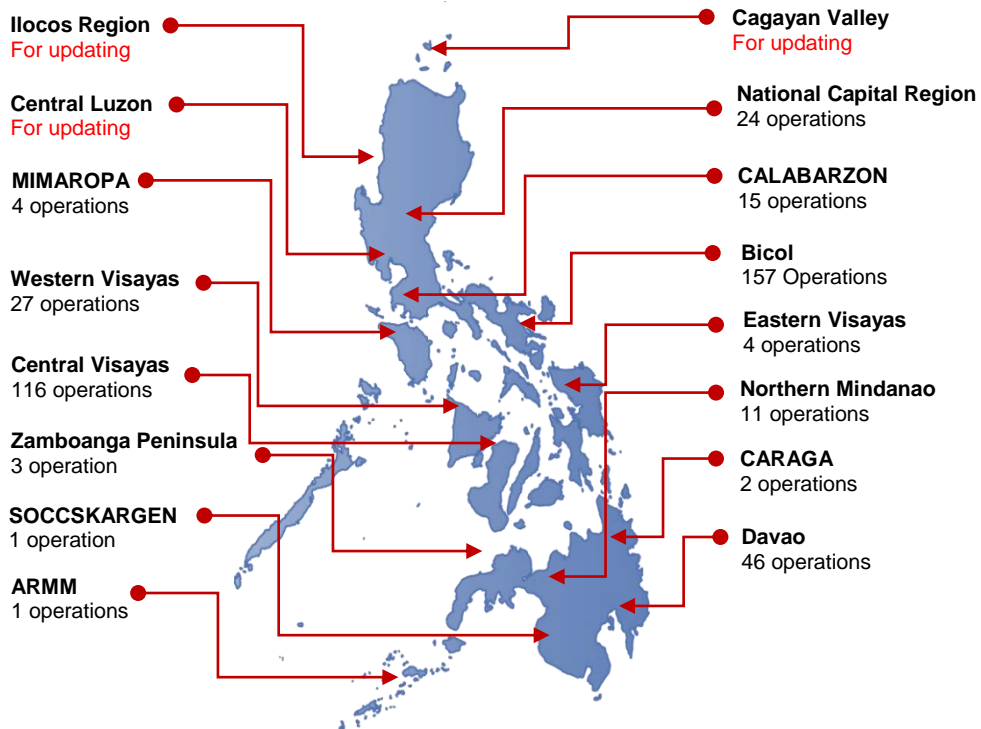
- Eighty-six percent (86%) of passenger and cargo shipping operations were completed in accordance with the ships' CPC.
- Fourteen percent (14%) of the shipping operations were affected due to the measures implemented in view Code Red Sublevel 2 for the COVID-19.
- Operations of passenger ships were more affected compared to cargo ships. 98% of the cargo shipping operations were completed under normal conditions compared to passenger ships at 65%.
- Daily average passenger and cargo ship operations are 133 completed under normal conditions, 15 cancelled trips, 6 delayed and 0 not completed voyage.
- **With cargo shipping still operational, transport of goods amid MGCQ, and GCQ is assured.**

**PASSENGER AND CARGO
SHIPPING IN NUMBERS**

12:00:00 AM

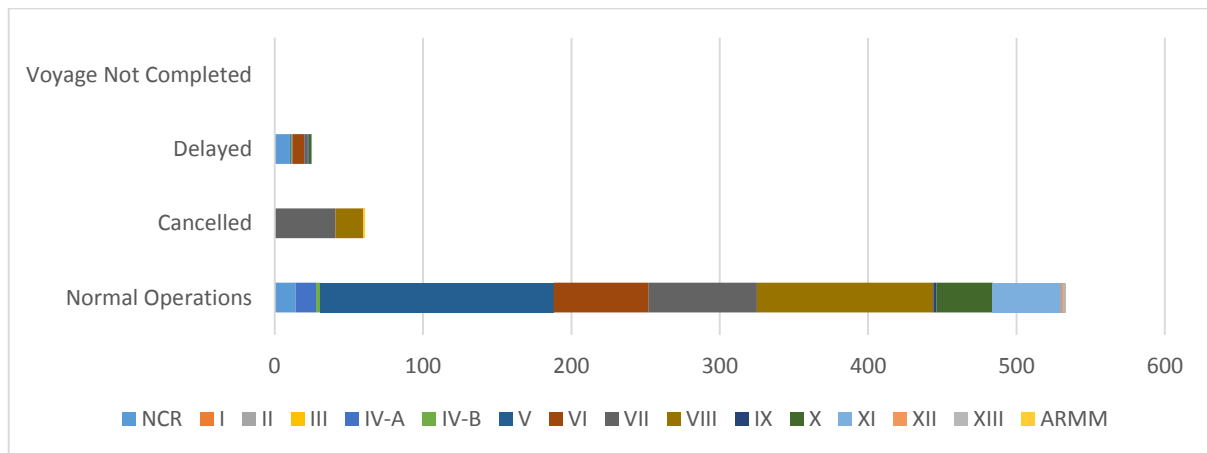
- 619** Shipping Operations Recorded
- 224** Passenger Ships Operated
- 395** Cargo Ships Operated
- 533** Ships Operated Normally
- 61** Operations Cancelled
- 25** Operations Delayed
- 0** Operation Uncompleted

**PASSENGER AND CARGO SHIPPING OPERATIONS IN THE PHILIPPINES
IN AREAS UNDER MGCQ and GCQ**



**Total of 619 Passenger and Cargo
Shipping Operations**

I. STATUS OF SHIPPING OPERATIONS NATIONWIDE



On 12:00:00 AM, there were 619 passenger and cargo shipping operations conducted wherein 533 or 86% were completed in accordance with their Certificate of Public Convenience (CPC).

Out of the 533 operations completed under normal conditions, the reported movements were mostly in the Bicol Region at 29% and Eastern Visayas Region at 22%.

Meanwhile, 10% of the passenger and cargo shipping operations were cancelled, all due to the community quarantine measures imposed by the different local government units governing the ships' ports of destination. Mostly affected were operations in the Central Visayas and Eastern Visayas Regions.

Twenty (20) passenger ships or 9% encountered delays due to the additional measures adopted in view of COVID-19 such as temperature screening and inspections.

Lastly, no shipping operations were not completed at the time of reporting, as the respective ships were still underway.

II. STATUS OF SHIPPING OPERATIONS BY CLASSIFICATION

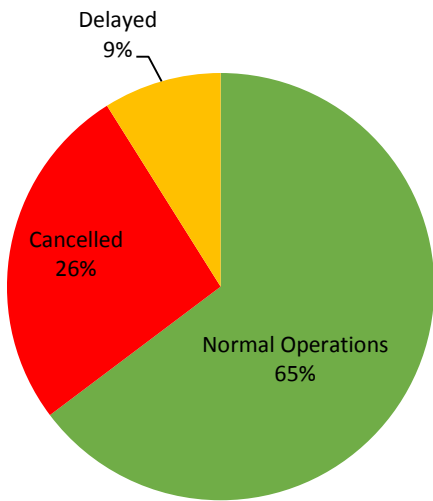
Region	Normal Operations		Cancelled		Delayed		Not Completed	
	Passenger	Cargo	Passenger	Cargo	Passenger	Cargo	Passenger	Cargo
NCR	3	11	-	-	7	3	-	-
I	-	-	-	-	-	-	-	-
II	-	-	-	-	-	-	-	-
III	-	-	-	-	-	-	-	-
IV-A	11	3	-	-	1	-	-	-
IV-B	1	2	-	-	1	-	-	-
V	26	131	-	-	-	-	-	-
VI	19	45	-	-	8	-	-	-
VII	27	46	39	2	2	-	-	-
VIII	48	71	19	-	-	-	-	-
IX	1	1	-	-	-	1	-	-
X	-	38	-	-	1	1	-	-
XI	8	38	-	-	-	-	-	-
XII	-	1	-	-	-	-	-	-
XIII	1	1	-	-	-	-	-	-
ARMM	-	-	1	-	-	-	-	-
Total	145	388	59	2	20	5	-	-

Amid the measures in place due to MGCQ, and GCQ, 388 out of 395 (98%) cargo ships still operated normally – are 8 bulk carrier, 14 container ships, 12 general cargo ships, 120 LCT ships, 2 oil tankers, 216 Roro cargo ships.

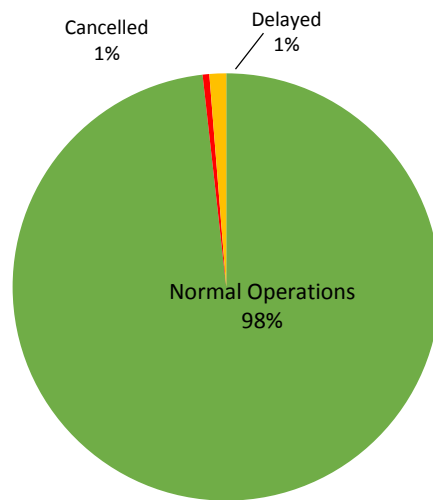
One hundred and forty-five (145) passenger ships completed their voyage – 42 conventional passenger ships, 62 RoPax ships and 41 fast craft ferry completed their operations but mostly only carried cargoes during their voyage.

Meanwhile out of the 224 passenger ships, 35% were affected by the measures adopted in view of COVID-19. These measures caused either the cancellation, delay, or uncompleted operations of 79 passenger ships.

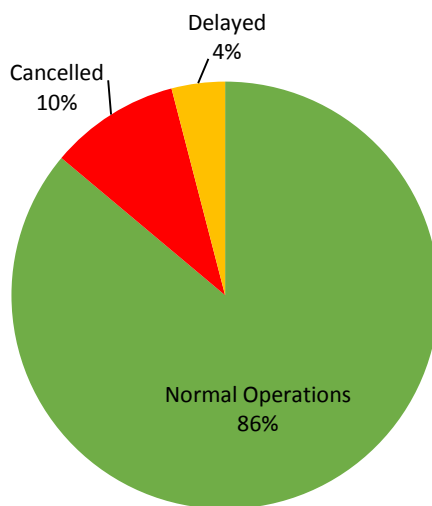
PASSENGER Ship Operations



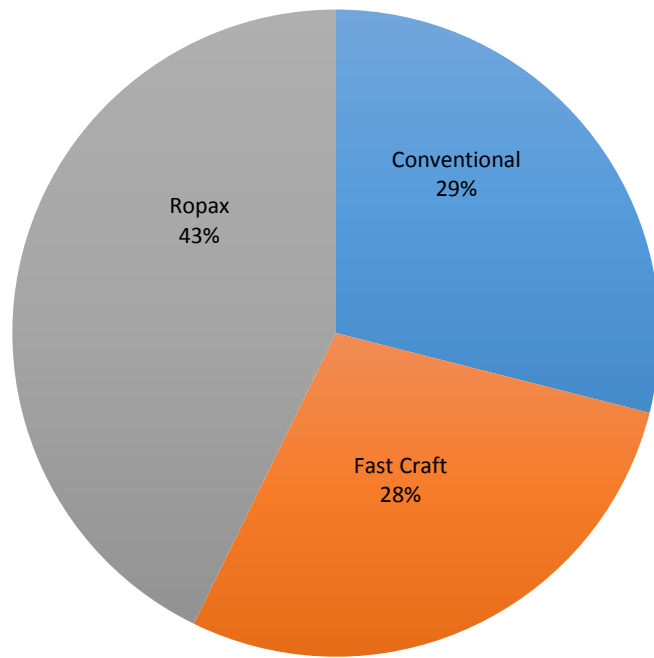
CARGO Ship Operations



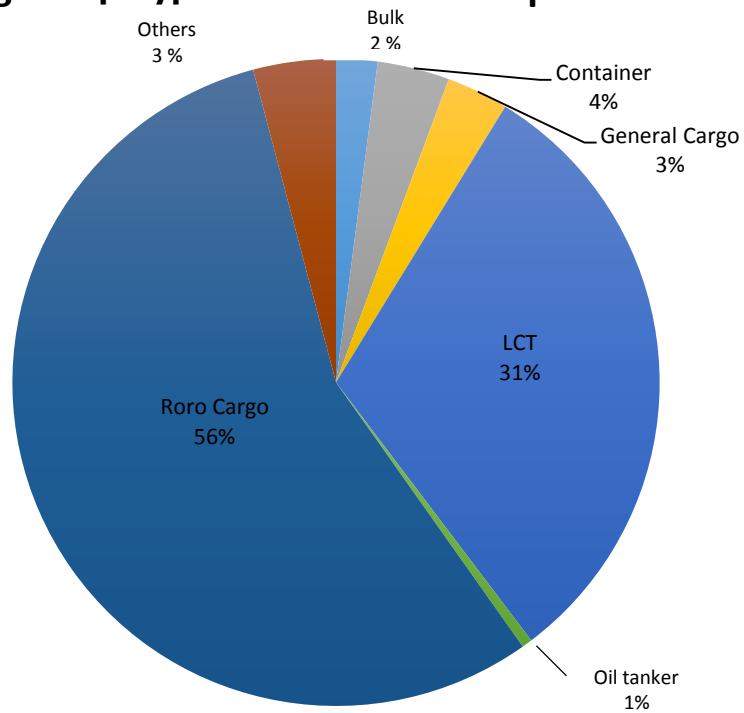
PASSENGER and CARGO Ship Operations



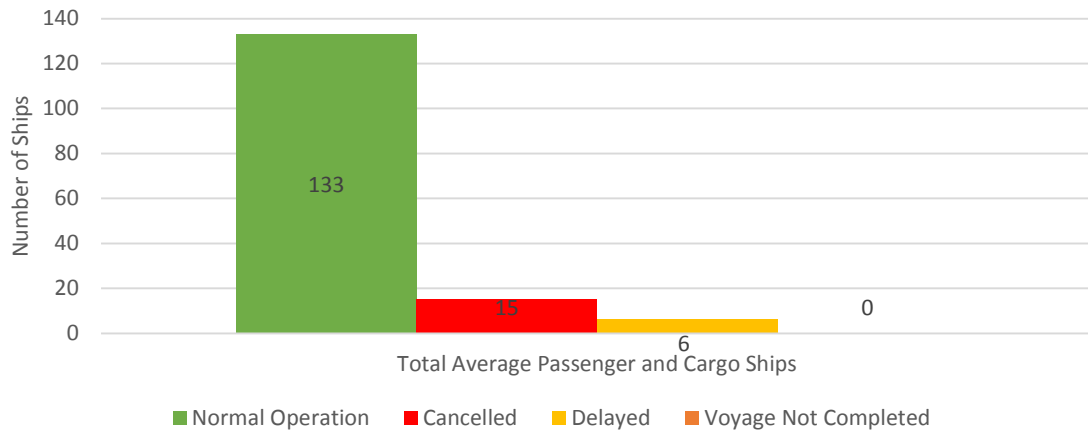
Passenger Ship Types under Normal Operations



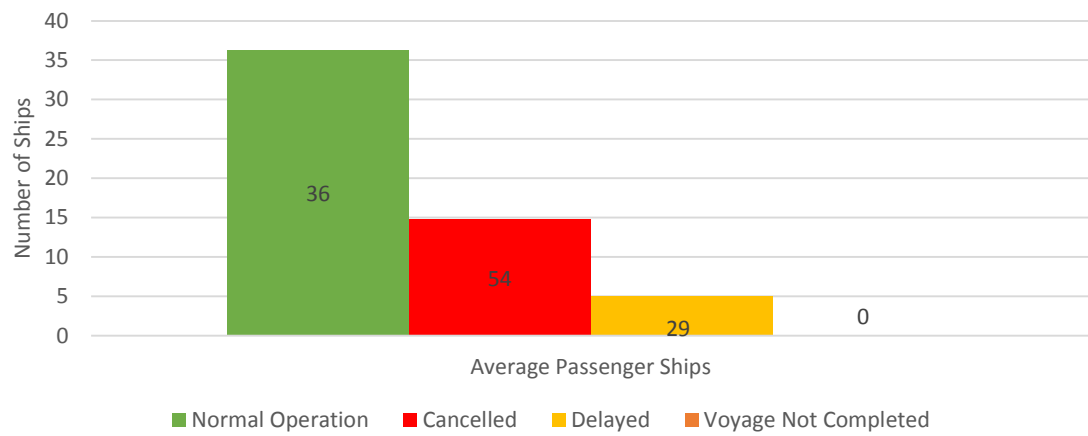
Cargo Ship Types under Normal Operations



Daily Average Passenger and Cargo Ship Operation



Daily Average Passenger Ship Operation



Daily Average Cargo Ship Operation

