



**MARITIME INDUSTRY AUTHORITY**  
**WEEKLY SUMMARY SITUATION REPORT - Summary 68**  
 Passenger and Cargo Shipping Operations on July 02 - 08, 2021  
 in areas under MGCQ and GCQ

*Data generated on July 02 - 08, 2021, 3:00 PM*

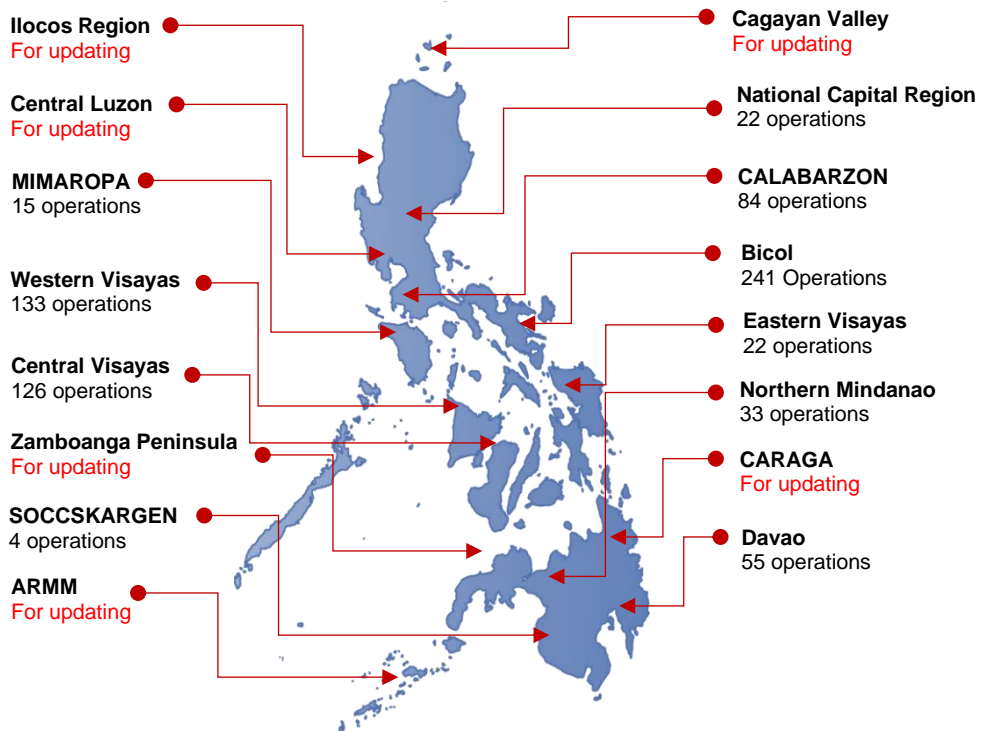
**HIGHLIGHTS**

- Ninety-two percent (92%) of passenger and cargo shipping operations were completed in accordance with the ships' CPC.
- Eight percent ( 8%) of the shipping operations were affected due to the measures implemented in view Code Red Sublevel 2 for the COVID-19.
- Operations of passenger ships were more affected compared to cargo ships. 100% of the cargo shipping operations were completed under normal conditions compared to passenger ships at 80%.
- Daily average passenger and cargo ship operations are 214 completed under normal conditions, 15 cancelled trips, 5 delayed and 0 not completed voyage.
- **With cargo shipping still operational, transport of goods amid MGCQ, and GCQ is assured.**

**PASSENGER AND CARGO SHIPPING IN NUMBERS**  
 July 02 - 08, 2021

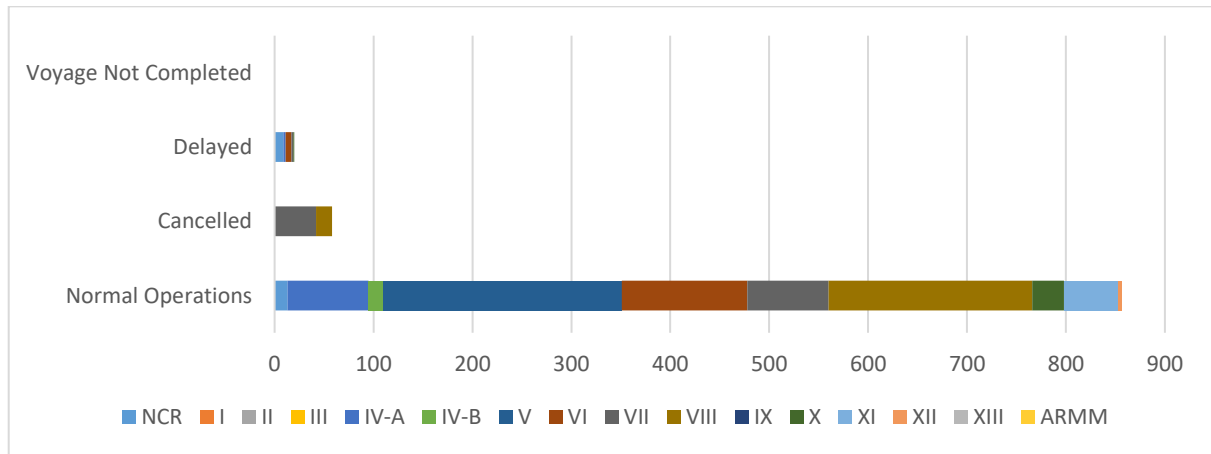
- 935** Shipping Operations Recorded
- 383** Passenger Ships Operated
- 552** Cargo Ships Operated
- 857** Ships Operated Normally
- 58** Operations Cancelled
- 20** Operations Delayed
- 0** Operation Uncompleted

**PASSENGER AND CARGO SHIPPING OPERATIONS IN THE PHILIPPINES  
 IN AREAS UNDER MGCQ and GCQ**



**Total of 935 Passenger and Cargo Shipping Operations**

## I. STATUS OF SHIPPING OPERATIONS NATIONWIDE



On July 02 - 08, 2021, there were 935 passenger and cargo shipping operations conducted wherein 857 or 92% were completed in accordance with their Certificate of Public Convenience (CPC).

Out of the 857 operations completed under normal conditions, the reported movements were mostly in the Bicol Region at 28% and Eastern Visayas Region at 24%.

Meanwhile, 6% of the passenger and cargo shipping operations were cancelled, all due to the community quarantine measures imposed by the different local government units governing the ships' ports of destination. Mostly affected were operations in the Central Visayas and Eastern Visayas Regions.

Nineteen (19) passenger ships or 5% encountered delays due to the additional measures adopted in view of COVID-19 such as temperature screening and inspections.

Lastly, no shipping operations were not completed at the time of reporting, as the respective ships were still underway.

## II. STATUS OF SHIPPING OPERATIONS BY CLASSIFICATION

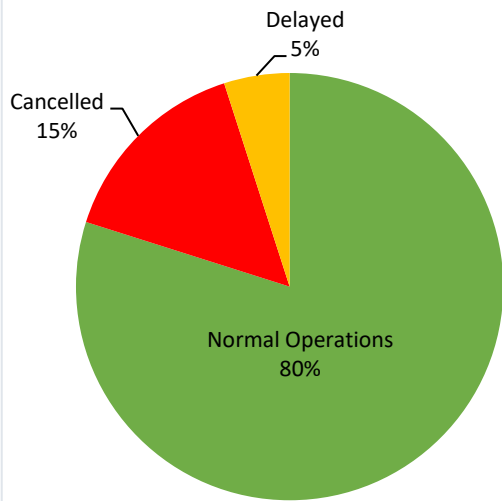
Region	Normal Operations		Cancelled		Delayed		Not Completed	
	Passenger	Cargo	Passenger	Cargo	Passenger	Cargo	Passenger	Cargo
<b>NCR</b>	<b>7</b>	<b>6</b>	-	-	<b>9</b>	-	-	-
<b>I</b>	-	-	-	-	-	-	-	-
<b>II</b>	-	-	-	-	-	-	-	-
<b>III</b>	-	-	-	-	-	-	-	-
<b>IV-A</b>	<b>82</b>	-	-	-	<b>2</b>	-	-	-
<b>IV-B</b>	<b>15</b>	-	-	-	-	-	-	-
<b>V</b>	<b>35</b>	<b>206</b>	-	-	-	-	-	-
<b>VI</b>	<b>39</b>	<b>88</b>	-	-	<b>5</b>	<b>1</b>	-	-
<b>VII</b>	<b>23</b>	<b>59</b>	<b>42</b>	-	<b>2</b>	-	-	-
<b>VIII</b>	<b>97</b>	<b>109</b>	<b>16</b>	-	-	-	-	-
<b>IX</b>	-	-	-	-	-	-	-	-
<b>X</b>	-	<b>32</b>	-	-	<b>1</b>	-	-	-
<b>XI</b>	<b>8</b>	<b>47</b>	-	-	-	-	-	-
<b>XII</b>	-	<b>4</b>	-	-	-	-	-	-
<b>XIII</b>	-	-	-	-	-	-	-	-
<b>ARMM</b>	-	-	-	-	-	-	-	-
<b>Total</b>	<b>306</b>	<b>551</b>	<b>58</b>	-	<b>19</b>	<b>1</b>	-	-

Amid the measures in place due to MGCQ, and GCQ, 551 out of 552 (100%) cargo ships still operated normally – are 24 bulk carrier, 20 container ships, 5 general cargo ships, 182 LCT ships and 305 Roro cargo ships.

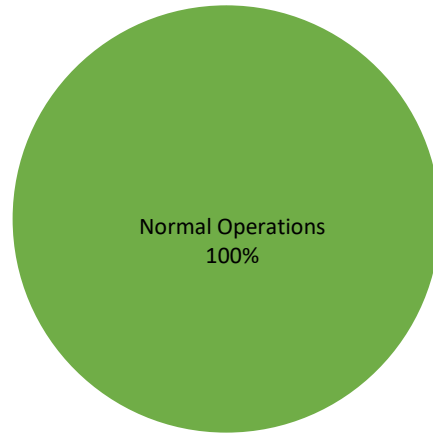
Three-hundred six (306) passenger ships completed their voyage – 174 conventional passenger ships, 85 RoPax ships and 47 fast craft ferry completed their operations but mostly only carried cargoes during their voyage.

Meanwhile out of the 383 passenger ships, 20% were affected by the measures adopted in view of COVID-19. These measures caused either the cancellation, delay, or uncompleted operations of 77 passenger ships.

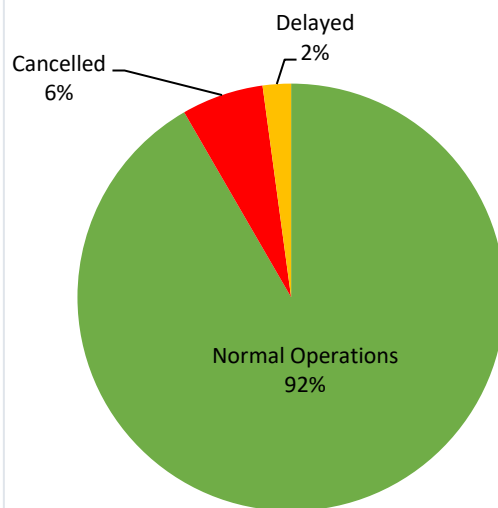
### PASSENGER Ship Operations



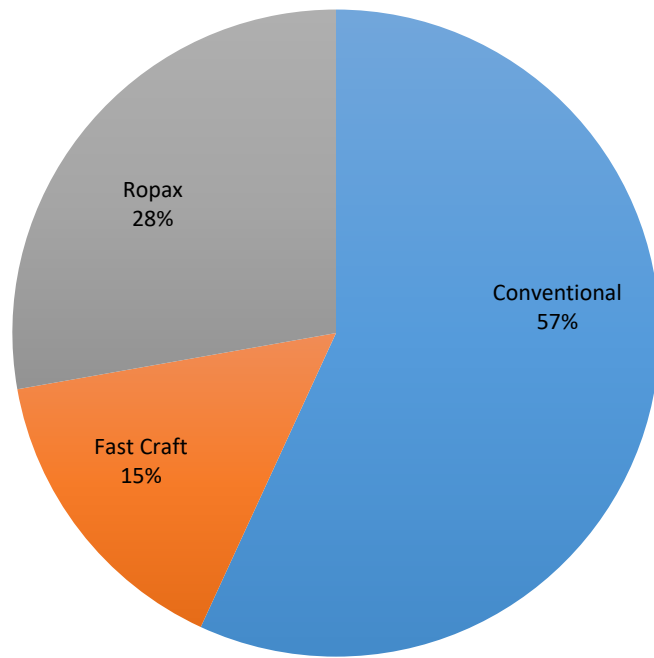
### CARGO Ship Operations



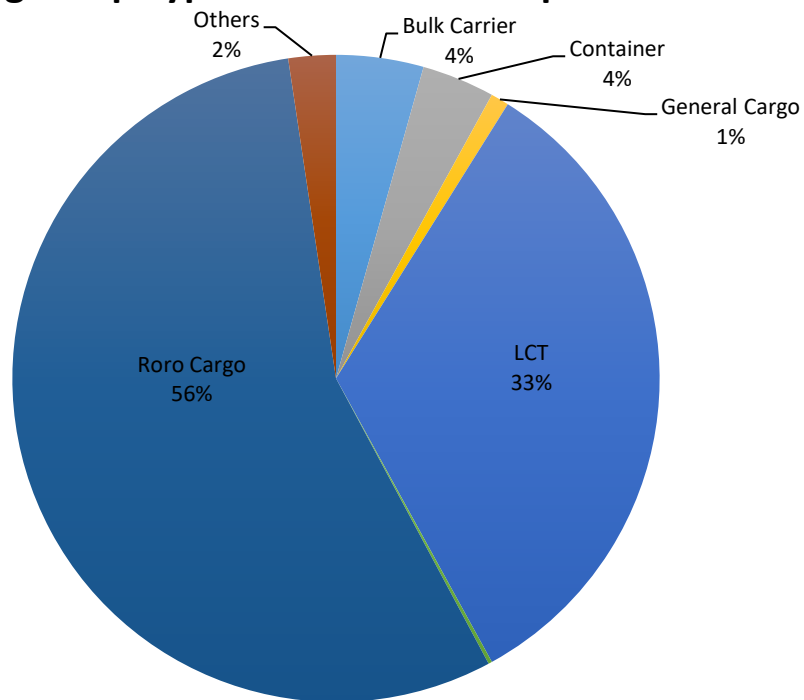
### PASSENGER and CARGO Ship Operations



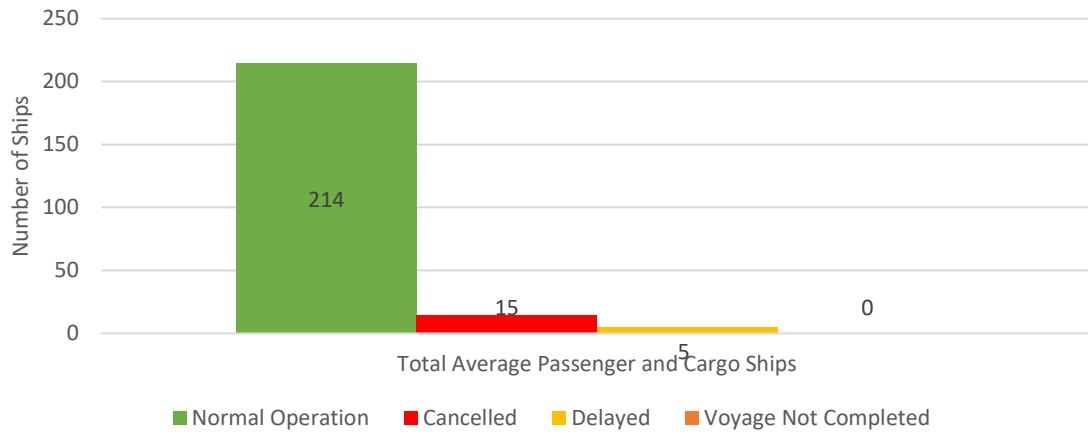
## Passenger Ship Types under Normal Operations



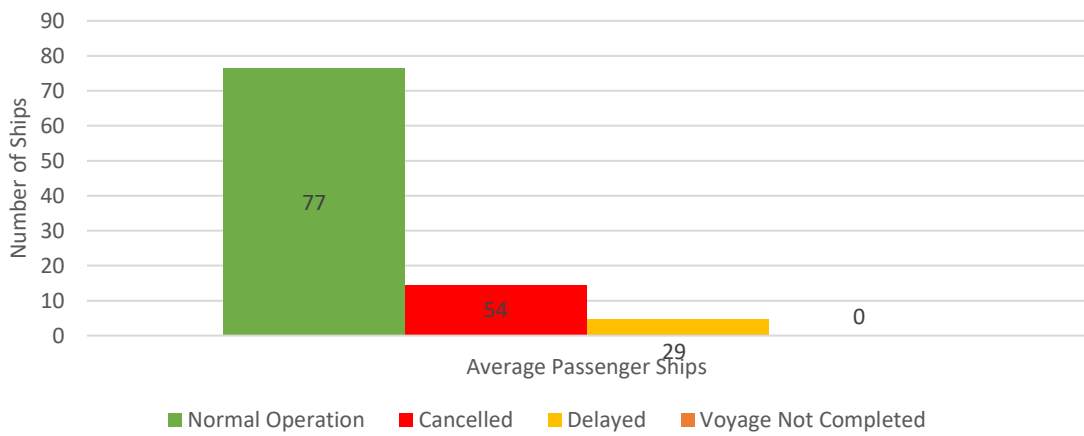
## Cargo Ship Types under Normal Operations



### Daily Average Passenger and Cargo Ship Operation



### Daily Average Passenger Ship Operation



### Daily Average Cargo Ship Operation

