



MARITIME INDUSTRY AUTHORITY
WEEKLY SUMMARY SITUATION REPORT - Summary 82
 Passenger and Cargo Shipping Operations on Oct 08 - 14, 2021
 in areas under MGCQ and GCQ
Data generated on Oct 08 - 14, 2021, 3:00 PM

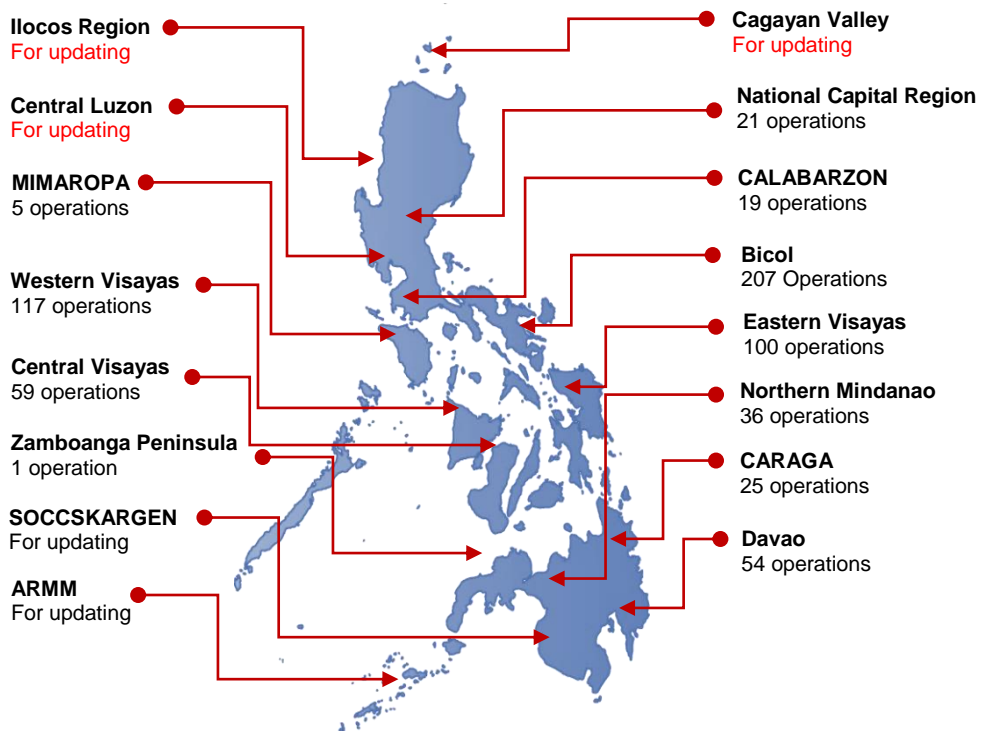
HIGHLIGHTS

- Eighty-Nine percent (89%) of passenger and cargo shipping operations were completed in accordance with the ships' CPC.
- Eleven percent (11%) of the shipping operations were affected due to the measures implemented in view Code Red Sublevel 2 for the COVID-19.
- Operations of passenger ships were more affected compared to cargo ships. 100% of the cargo shipping operations were completed under normal conditions compared to passenger ships at 67%.
- Daily average passenger and cargo ship operations are 143 completed under normal conditions, 14 cancelled trips, 4 delayed and 0 not completed voyage.
- **With cargo shipping still operational, transport of goods amid MGCQ, and GCQ is assured.**

PASSENGER AND CARGO SHIPPING IN NUMBERS
 Oct 08 - 14, 2021

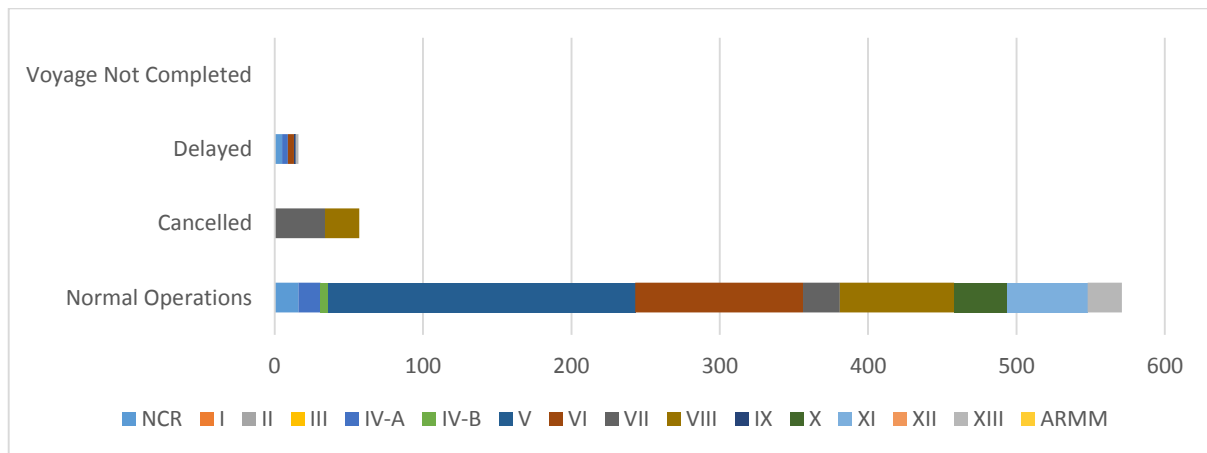
- 644** Shipping Operations Recorded
- 220** Passenger Ships Operated
- 424** Cargo Ships Operated
- 571** Ships Operated Normally
- 57** Operations Cancelled
- 16** Operations Delayed
- 0** Operation Uncompleted

**PASSENGER AND CARGO SHIPPING OPERATIONS IN THE PHILIPPINES
 IN AREAS UNDER MGCQ and GCQ**



Total of 644 Passenger and Cargo Shipping Operations

I. STATUS OF SHIPPING OPERATIONS NATIONWIDE



On Oct 08 - 14, 2021, there were 644 passenger and cargo shipping operations conducted wherein 571 or 89% were completed in accordance with their Certificate of Public Convenience (CPC).

Out of the 571 operations completed under normal conditions, the reported movements were mostly in the Bicol Region at 36% and Eastern Visayas Region at 20%.

Meanwhile, 9% of the passenger and cargo shipping operations were cancelled, all due to the community quarantine measures imposed by the different local government units governing the ships' ports of destination. Mostly affected were operations in the Central Visayas and Eastern Visayas Regions.

Sixteen (16) passenger ships or 7% encountered delays due to the additional measures adopted in view of COVID-19 such as temperature screening and inspections.

Lastly, no shipping operations were not completed at the time of reporting, as the respective ships were still underway.

II. STATUS OF SHIPPING OPERATIONS BY CLASSIFICATION

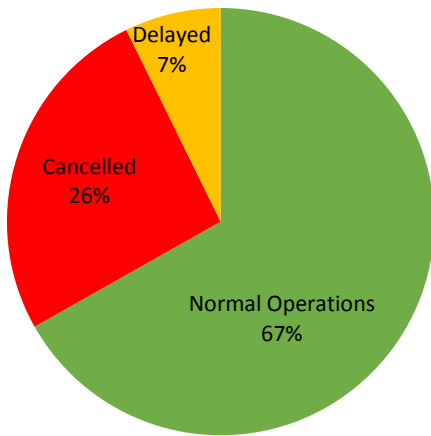
Region	Normal Operations		Cancelled		Delayed		Not Completed	
	Passenger	Cargo	Passenger	Cargo	Passenger	Cargo	Passenger	Cargo
NCR	16	-	-	-	5	-	-	-
I	-	-	-	-	-	-	-	-
II	-	-	-	-	-	-	-	-
III	-	-	-	-	-	-	-	-
IV-A	15	-	-	-	4	-	-	-
IV-B	4	1	-	-	-	-	-	-
V	29	178	-	-	-	-	-	-
VI	33	80	-	-	4	-	-	-
VII	4	21	34	-	-	-	-	-
VIII	32	45	23	-	-	-	-	-
IX	-	-	-	-	1	-	-	-
X	1	35	-	-	-	-	-	-
XI	8	46	-	-	-	-	-	-
XII	-	-	-	-	-	-	-	-
XIII	5	18	-	-	2	-	-	-
ARMM	-	-	-	-	-	-	-	-
Total	147	424	57	-	16	-	-	-

Amid the measures in place due to MGCQ, and GCQ, 424 out of 424 (100%) cargo ships still operated normally – are 15 bulk carrier, 8 container ships, 6 general cargo ships, 51 LCT ships, 12 oil tankers, 329 Roro cargo ships.

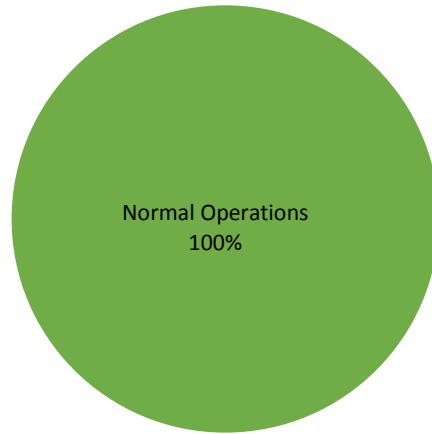
One hundred forty-seven (147) passenger ships completed their voyage – 67 conventional passenger ships, 59 RoPax ships and 21 fast craft ferry completed their operations but mostly only carried cargoes during their voyage.

Meanwhile out of the 220 passenger ships, 33% were affected by the measures adopted in view of COVID-19. These measures caused either the cancellation, delay, or uncompleted operations of 73 passenger ships.

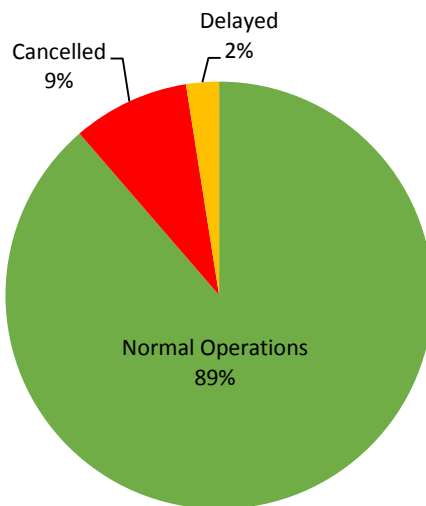
PASSENGER Ship Operations



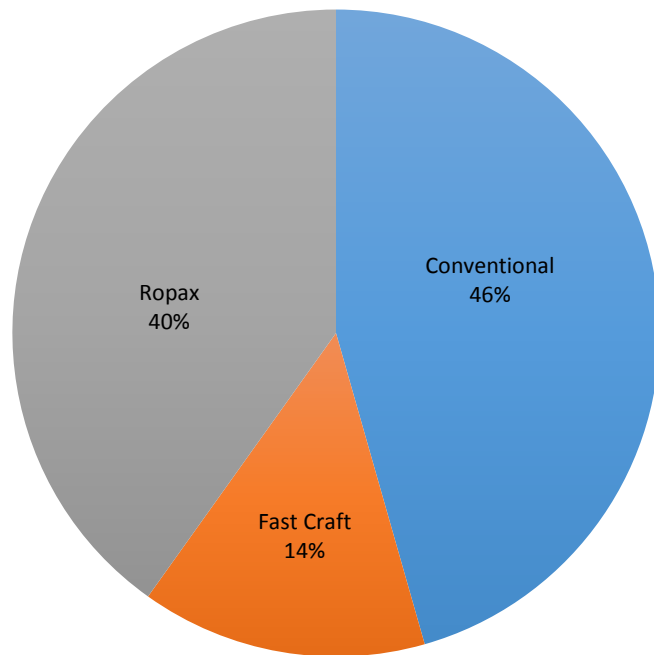
CARGO Ship Operations



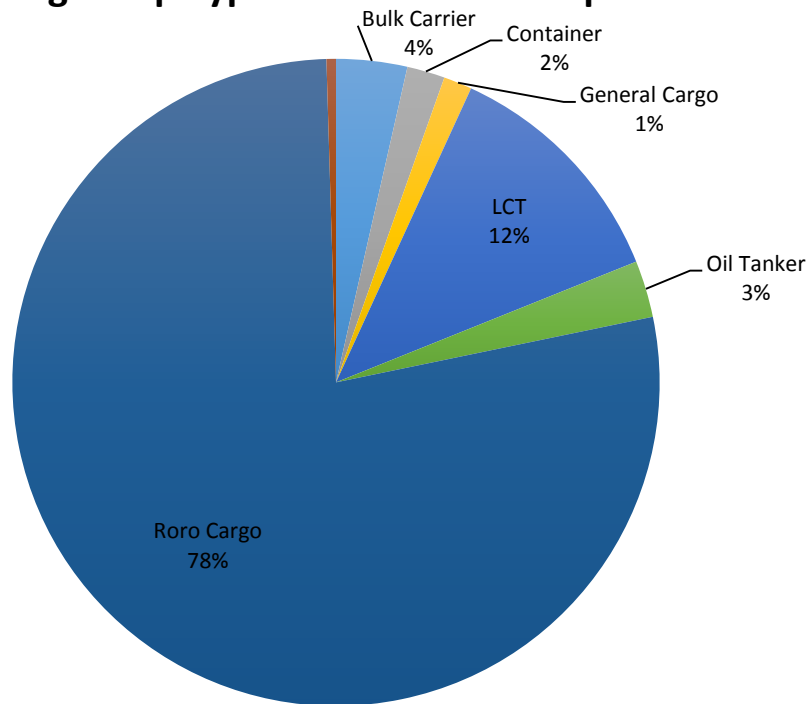
PASSENGER and CARGO Ship Operations



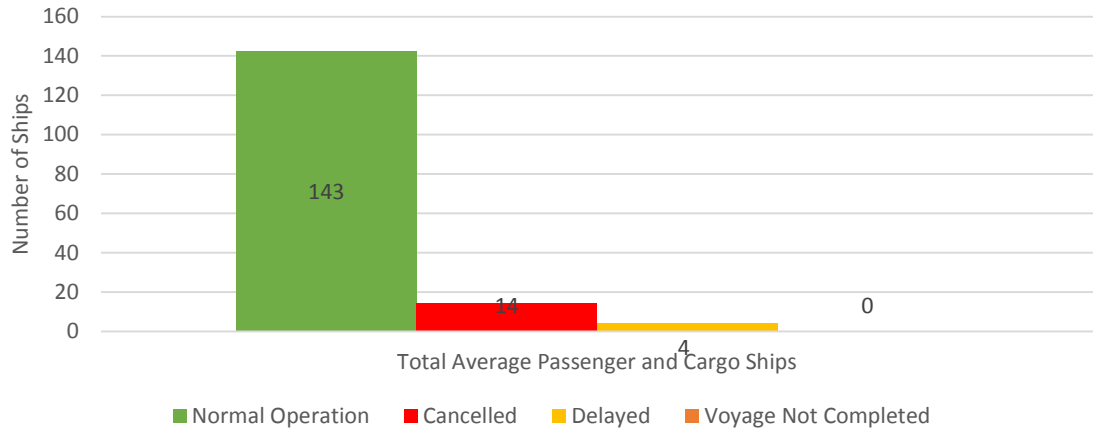
Passenger Ship Types under Normal Operations



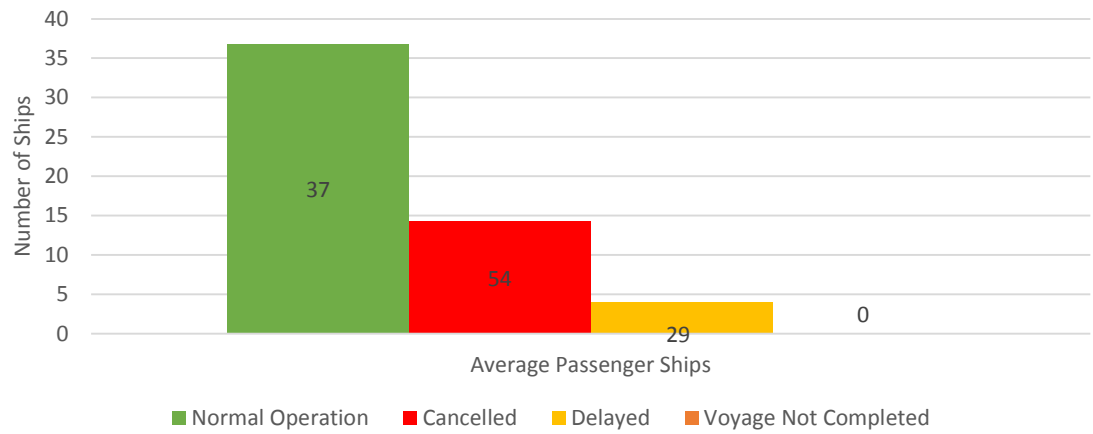
Cargo Ship Types under Normal Operations



Daily Average Passenger and Cargo Ship Operation



Daily Average Passenger Ship Operation



Daily Average Cargo Ship Operation

