



MARITIME INDUSTRY AUTHORITY
WEEKLY SUMMARY SITUATION REPORT - Summary 90
 Passenger and Cargo Shipping Operations on Dec. 03 - 09, 2021
 in areas under MGCQ and GCQ

Data generated on Dec. 03 - 09, 2021, 3:00 PM

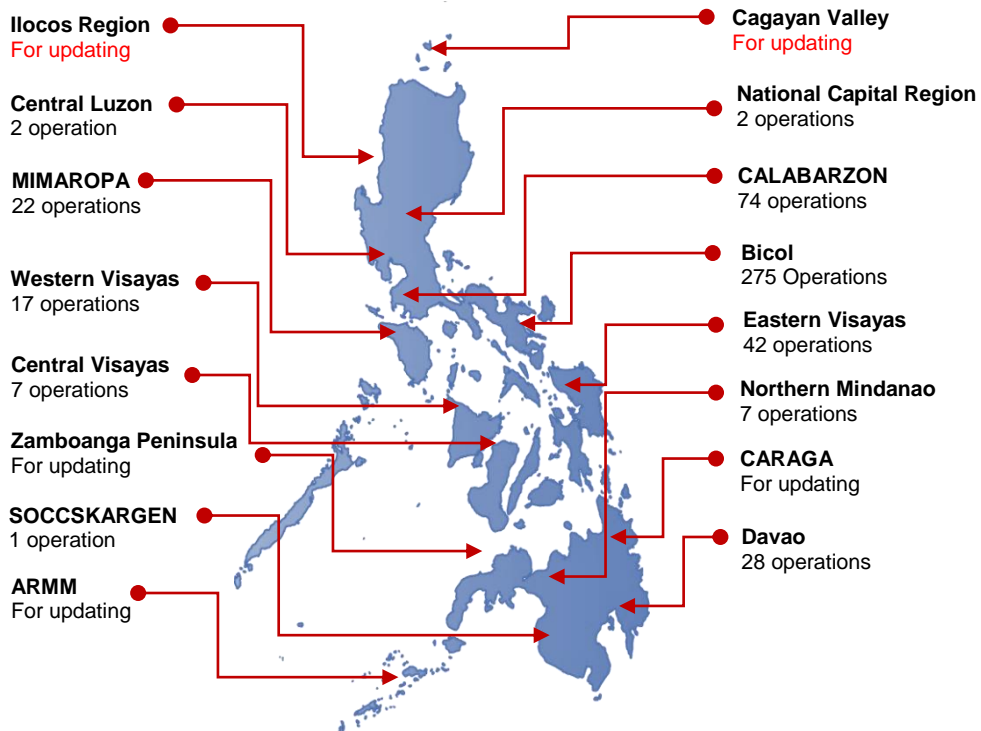
HIGHLIGHTS

- Ninety-Eight percent (98%) of passenger and cargo shipping operations were completed in accordance with the ships' CPC.
- Two percent (2%) of the shipping operations were affected due to the measures implemented in view Code Red Sublevel 2 for the COVID-19.
- Operations of passenger ships were more affected compared to cargo ships. 99% of the cargo shipping operations were completed under normal conditions compared to passenger ships at 95%.
- Daily average passenger and cargo ship operations are 189 completed under normal conditions, 1 cancelled trips, 3 delayed and 0 not completed voyage.
- **With cargo shipping still operational, transport of goods amid MGCQ, and GCQ is assured.**

PASSENGER AND CARGO SHIPPING IN NUMBERS
 Dec. 03 - 09, 2021

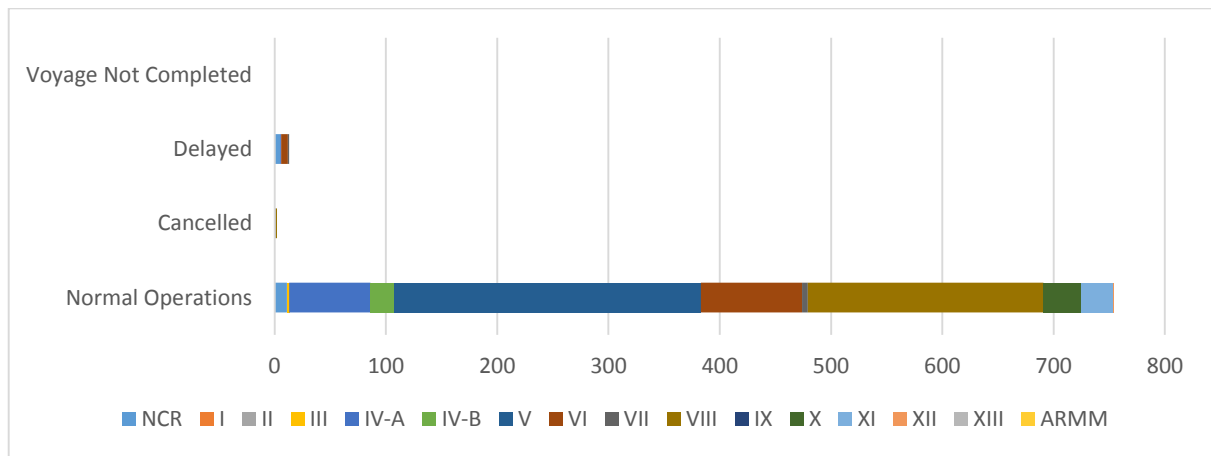
- 769** Shipping Operations Recorded
- 260** Passenger Ships Operated
- 509** Cargo Ships Operated
- 754** Ships Operated Normally
- 2** Operations Cancelled
- 13** Operations Delayed
- 0** Operation Uncompleted

**PASSENGER AND CARGO SHIPPING OPERATIONS IN THE PHILIPPINES
 IN AREAS UNDER MGCQ and GCQ**



Total of 769 Passenger and Cargo Shipping Operations

I. STATUS OF SHIPPING OPERATIONS NATIONWIDE



On Dec. 03 - 09, 2021, there were 769 passenger and cargo shipping operations conducted wherein 754 or 98% were completed in accordance with their Certificate of Public Convenience (CPC).

Out of the 754 operations completed under normal conditions, the reported movements were mostly in the Bicol Region at 36% and Eastern Visayas Region at 28%.

Ten (10) passenger ships or 4% encountered delays due to the additional measures adopted in view of COVID-19 such as temperature screening and inspections.

Lastly, no shipping operations were not completed at the time of reporting, as the respective ships were still underway.

II. STATUS OF SHIPPING OPERATIONS BY CLASSIFICATION

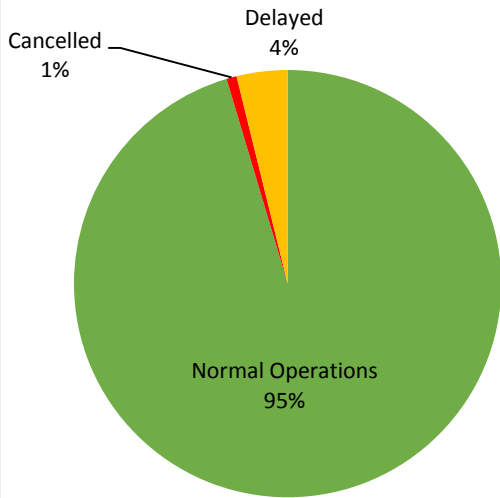
Region	Normal Operations		Cancelled		Delayed		Not Completed	
	Passenger	Cargo	Passenger	Cargo	Passenger	Cargo	Passenger	Cargo
NCR	11	-	-	-	5	-	-	-
I	-	-	-	-	-	-	-	-
II	-	-	-	-	-	-	-	-
III	-	2	-	-	-	-	-	-
IV-A	73	-	-	-	1	-	-	-
IV-B	22	-	-	-	-	-	-	-
V	29	246	-	-	-	-	-	-
VI	30	61	-	-	3	3	-	-
VII	5	-	1	-	1	-	-	-
VIII	75	137	1	-	-	-	-	-
IX	-	-	-	-	-	-	-	-
X	2	32	-	-	-	-	-	-
XI	1	27	-	-	-	-	-	-
XII	-	1	-	-	-	-	-	-
XIII	-	-	-	-	-	-	-	-
ARMM	-	-	-	-	-	-	-	-
Total	248	506	2	-	10	3	-	-

Amid the measures in place due to MGCQ, and GCQ, 506 out of 509 (99%) cargo ships still operated normally – are 27 bulk carrier, 2 container ships, 6 general cargo ships, 53 LCT ships, 1 oil tanker, 392 Roro cargo ships.

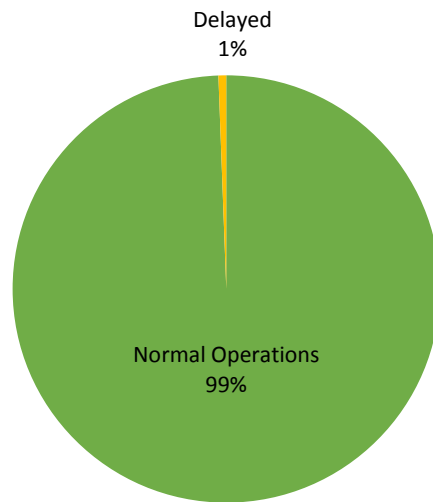
Two hundred and forty-eight (248) passenger ships completed their voyage – 167 conventional passenger ships, 52 RoPax ships and 29 fast craft ferry completed their operations but mostly only carried cargoes during their voyage.

Meanwhile out of the 260 passenger ships, 5% were affected by the measures adopted in view of COVID-19. These measures caused either the cancellation, delay, or uncompleted operations of 12 passenger ships.

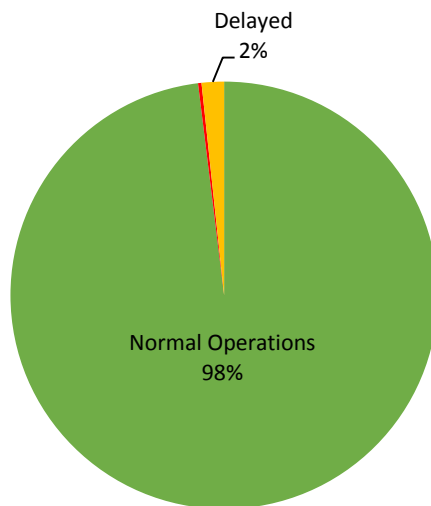
PASSENGER Ship Operations



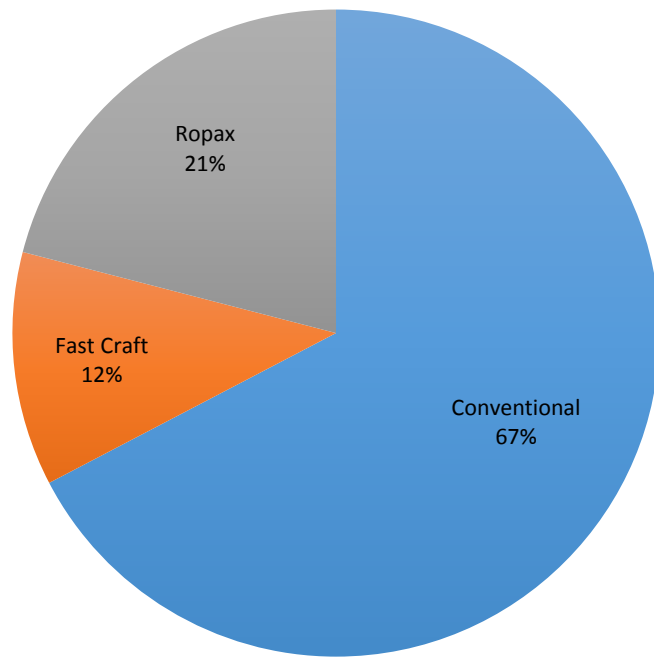
CARGO Ship Operations



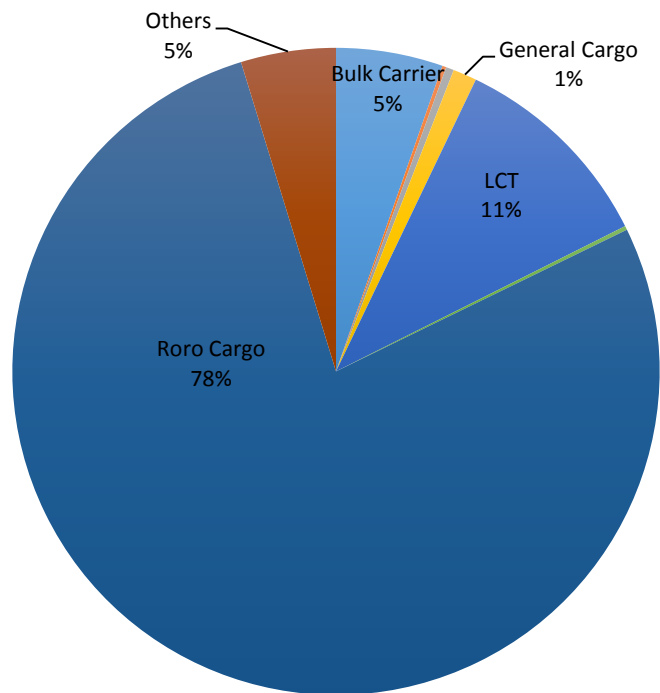
PASSENGER and CARGO Ship Operations



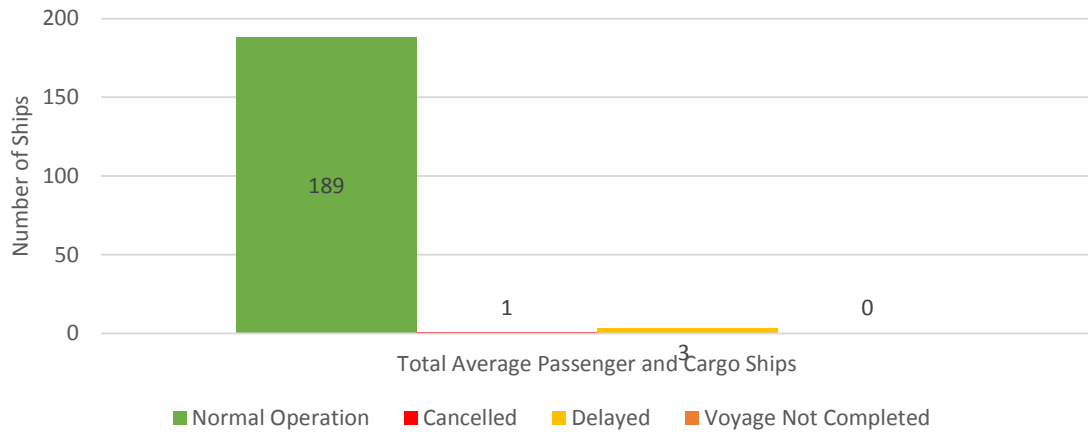
Passenger Ship Types under Normal Operations



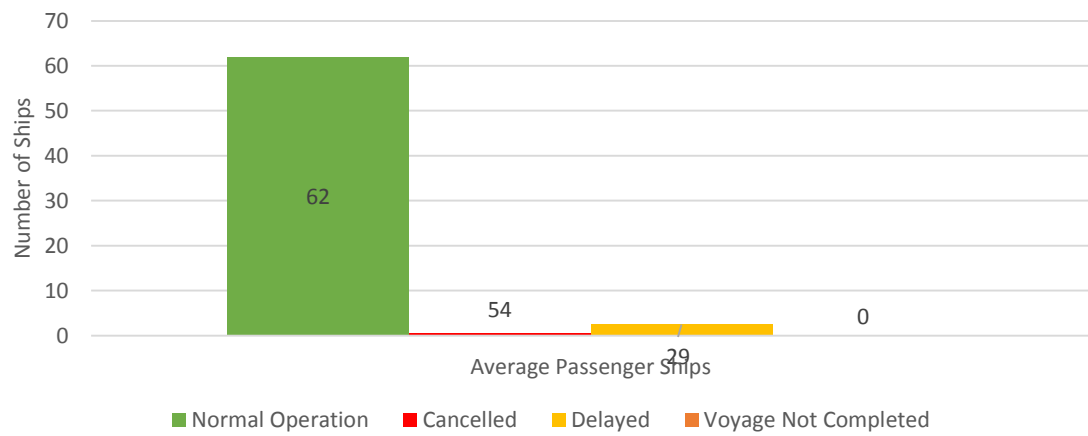
Cargo Ship Types under Normal Operations



Daily Average Passenger and Cargo Ship Operation



Daily Average Passenger Ship Operation



Daily Average Cargo Ship Operation

