



**MARITIME INDUSTRY AUTHORITY**  
**WEEKLY SUMMARY SITUATION REPORT - Summary 92**  
 Passenger and Cargo Shipping Operations on Dec. 17 - 23, 2021  
 in areas under MGCQ and GCQ

*Data generated on Dec. 17 - 23, 2021, 3:00 PM*

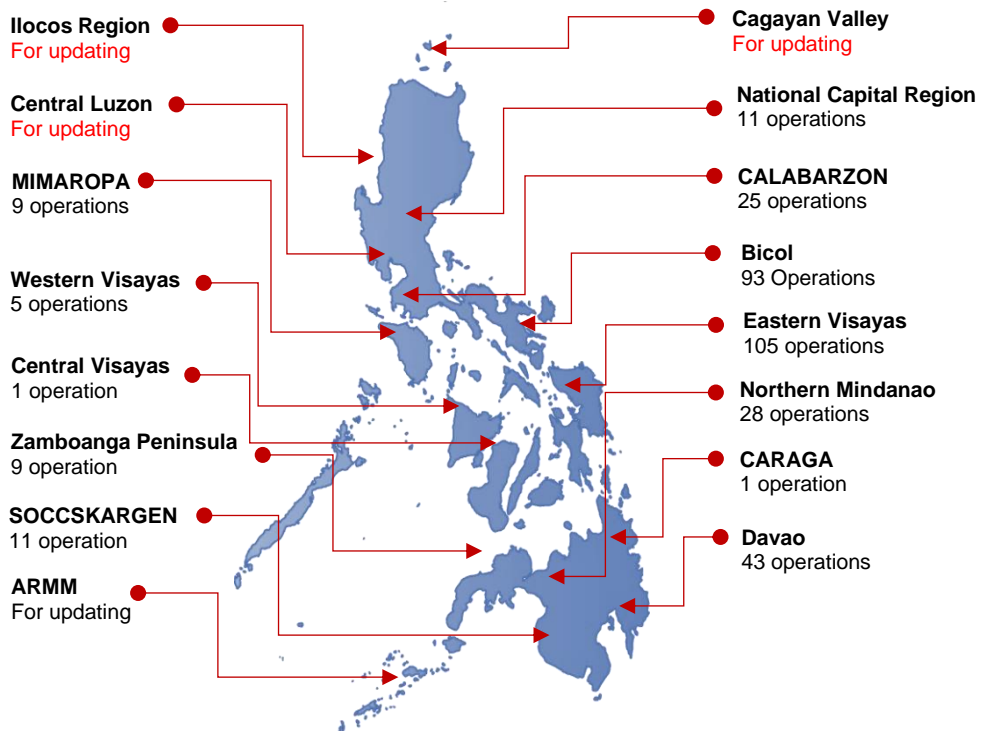
**HIGHLIGHTS**

- Ninety-nine percent (99%) of passenger and cargo shipping operations were completed in accordance with the ships' CPC.
- One percent ( 1%) of the shipping operations were affected due to the measures implemented in view Code Red Sublevel 2 for the COVID-19.
- Operations of passenger ships were more affected compared to cargo ships. 100% of the cargo shipping operations were completed under normal conditions compared to passenger ships at 96%.
- Daily average passenger and cargo ship operations are 54 completed under normal conditions, 1 cancelled trips, 0 delayed and 0 not completed voyage.
- **With cargo shipping still operational, transport of goods amid MGCQ, and GCQ is assured.**

**PASSENGER AND CARGO SHIPPING IN NUMBERS**  
 Dec. 17 - 23, 2021

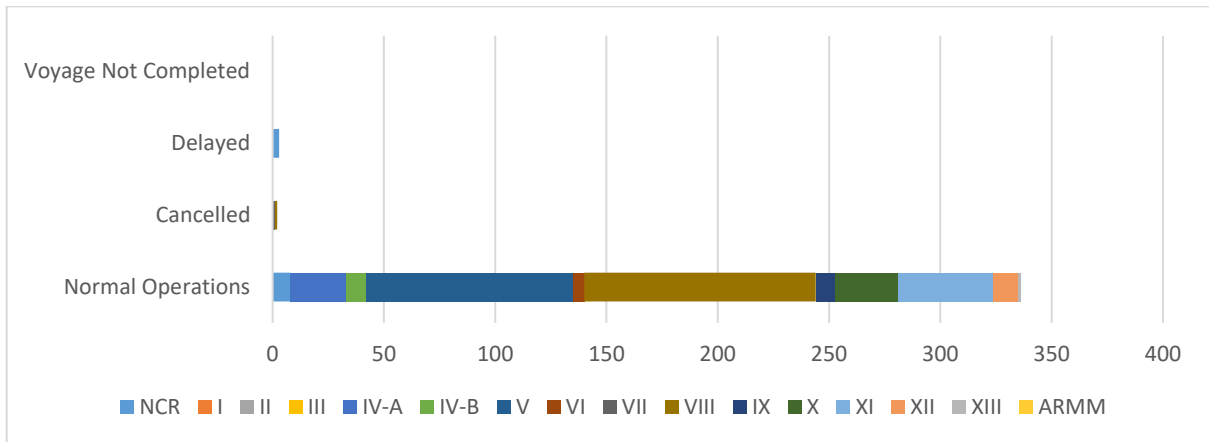
- 341** Shipping Operations Recorded
- 117** Passenger Ships Operated
- 224** Cargo Ships Operated
- 336** Ships Operated Normally
- 2** Operations Cancelled
- 3** Operations Delayed
- 0** Operation Uncompleted

**PASSENGER AND CARGO SHIPPING OPERATIONS IN THE PHILIPPINES  
 IN AREAS UNDER MGCQ and GCQ**



**Total of 341 Passenger and Cargo Shipping Operations**

## I. STATUS OF SHIPPING OPERATIONS NATIONWIDE



On Dec. 17 - 23, 2021, there were 341 passenger and cargo shipping operations conducted wherein 336 or 99% were completed in accordance with their Certificate of Public Convenience (CPC).

Out of the 336 operations completed under normal conditions, the reported movements were mostly in the Eastern Visayas Region at 31% and Bicol Region at 28%.

Meanwhile, 1% of the passenger and cargo shipping operations were cancelled, all due to the community quarantine measures imposed by the different local government units governing the ships' ports of destination. Mostly affected were operations in the Central Visayas and Eastern Visayas Regions.

Three (3) passenger ships or 3% encountered delays due to the additional measures adopted in view of COVID-19 such as temperature screening and inspections.

Lastly, no shipping operations were not completed at the time of reporting, as the respective ships were still underway.

## II. STATUS OF SHIPPING OPERATIONS BY CLASSIFICATION

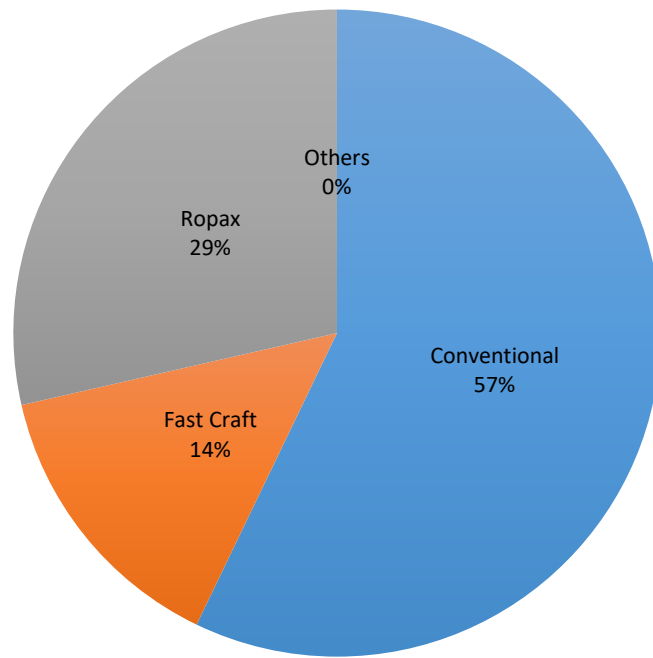
Region	Normal Operations		Cancelled		Delayed		Not Completed	
	Passenger	Cargo	Passenger	Cargo	Passenger	Cargo	Passenger	Cargo
<b>NCR</b>	7	1	-	-	3	-	-	-
<b>I</b>	-	-	-	-	-	-	-	-
<b>II</b>	-	-	-	-	-	-	-	-
<b>III</b>	-	-	-	-	-	-	-	-
<b>IV-A</b>	25	-	-	-	-	-	-	-
<b>IV-B</b>	9	-	-	-	-	-	-	-
<b>V</b>	19	74	-	-	-	-	-	-
<b>VI</b>	3	2	-	-	-	-	-	-
<b>VII</b>	-	-	1	-	-	-	-	-
<b>VIII</b>	37	67	1	-	-	-	-	-
<b>IX</b>	1	8	-	-	-	-	-	-
<b>X</b>	-	28	-	-	-	-	-	-
<b>XI</b>	11	32	-	-	-	-	-	-
<b>XII</b>	-	11	-	-	-	-	-	-
<b>XIII</b>	-	1	-	-	-	-	-	-
<b>ARMM</b>	-	-	-	-	-	-	-	-
<b>Total</b>	112	224	2	-	3	-	-	-

Amid the measures in place due to MGCQ, and GCQ, 224 out of 224 (100%) cargo ships still operated normally – are 12 bulk carrier, 3 container ships, , 25 LCT ships, 1 oil tanker, 183 Roro cargo ships.

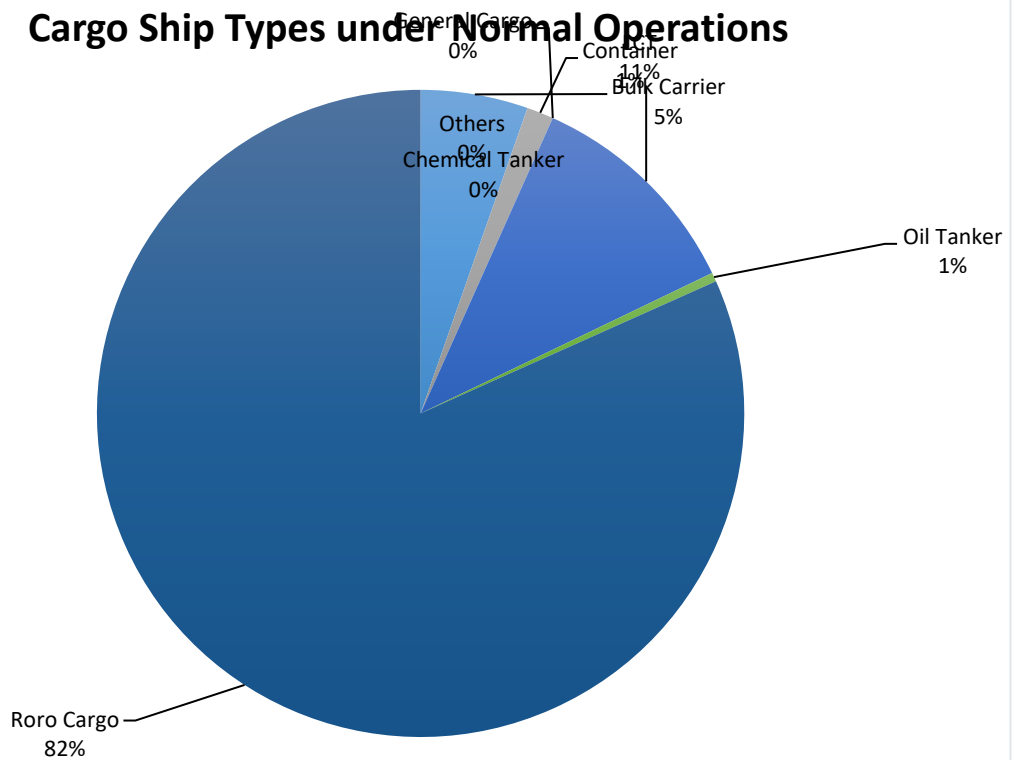
One hundred and twelve (112) passenger ships completed their voyage – 64 conventional passenger ships, 32 RoPax ships and 16 fast craft ferry completed their operations but mostly only carried cargoes during their voyage.

Meanwhile out of the 117 passenger ships, 4% were affected by the measures adopted in view of COVID-19. These measures caused either the cancellation, delay, or uncompleted operations of 5 passenger ships.

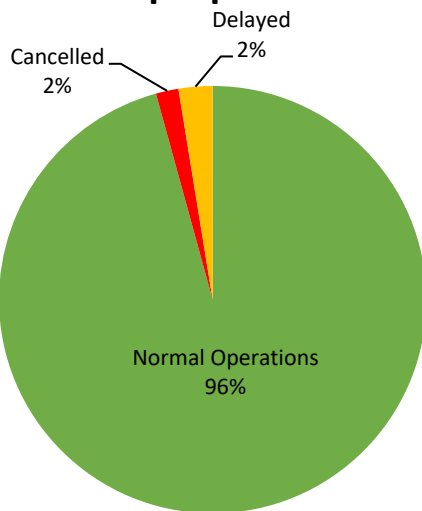
## Passenger Ship Types under Normal Operations



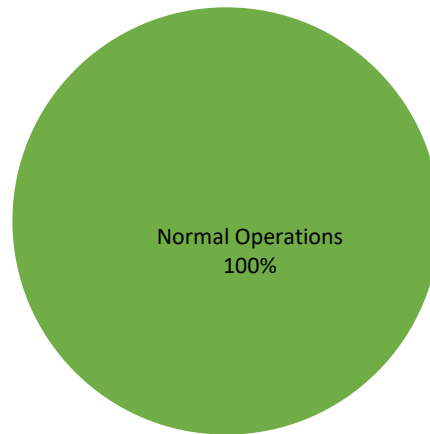
## Cargo Ship Types under Normal Operations



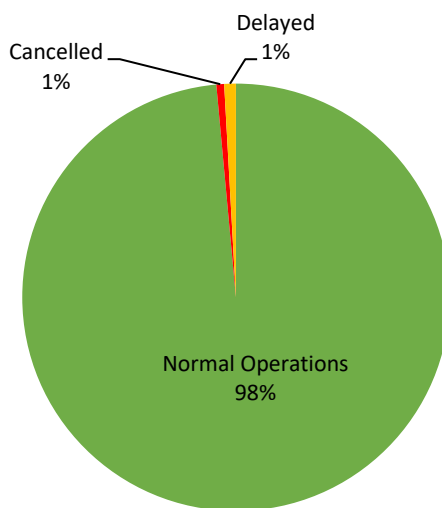
### PASSENGER Ship Operations



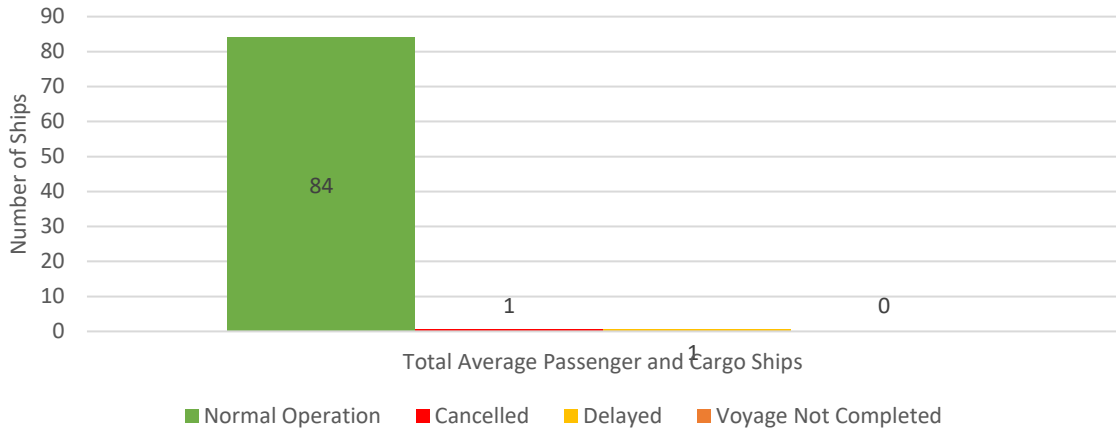
### CARGO Ship Operations



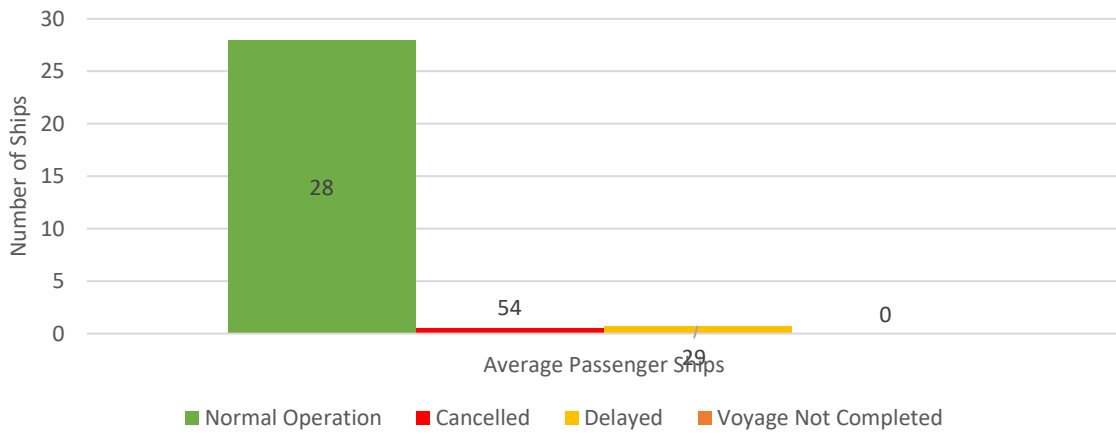
### PASSENGER and CARGO Ship Operations



### Daily Average Passenger and Cargo Ship Operation



### Daily Average Passenger Ship Operation



### Daily Average Cargo Ship Operation

