



MARITIME INDUSTRY AUTHORITY
WEEKLY SUMMARY SITUATION REPORT - Summary 99
 Passenger and Cargo Shipping Operations on Feb. 04 - 10, 2022
 in areas under MGCQ and GCQ

Data generated on Feb. 04 - 10, 2022, 3:00 PM

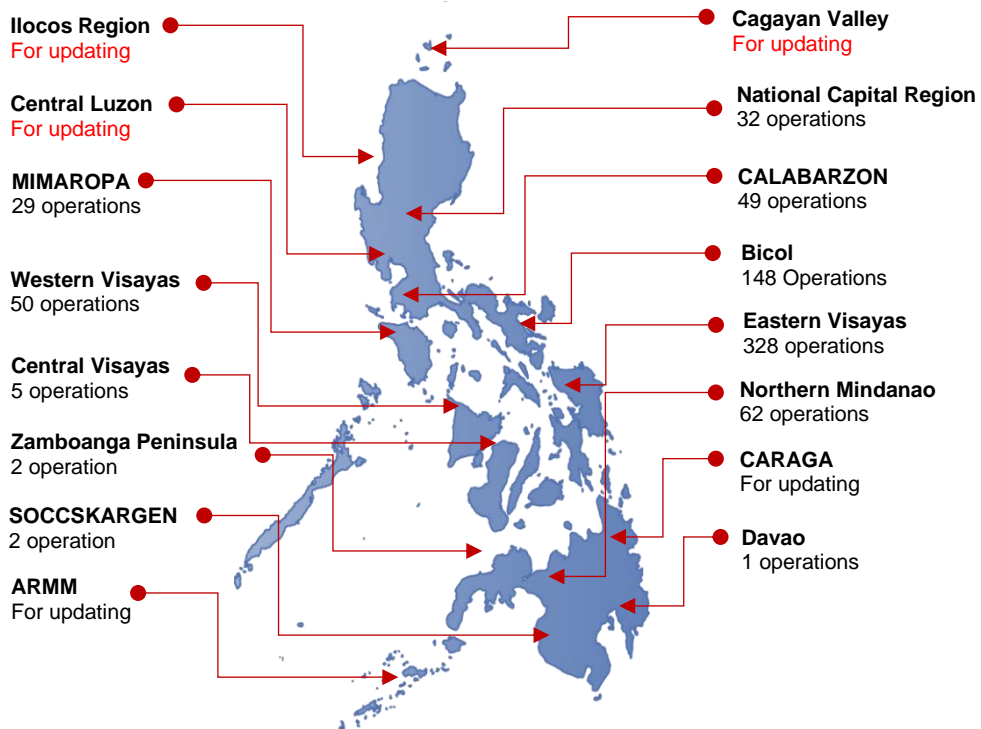
HIGHLIGHTS

- Ninety-eight percent (98%) of passenger and cargo shipping operations were completed in accordance with the ships' CPC.
- Two percent (2%) of the shipping operations were affected due to the measures implemented in view Code Red Sublevel 2 for the COVID-19.
- Operations of passenger ships were more affected compared to cargo ships. 100% of the cargo shipping operations were completed under normal conditions compared to passenger ships at 95%.
- Daily average passenger and cargo ship operations are 174 completed under normal conditions, 0 cancelled trips, 4 delayed and 0 not completed voyage.
- **With cargo shipping still operational, transport of goods amid MGCQ, and GCQ is assured.**

PASSENGER AND CARGO SHIPPING IN NUMBERS
Feb. 04 - 10, 2022

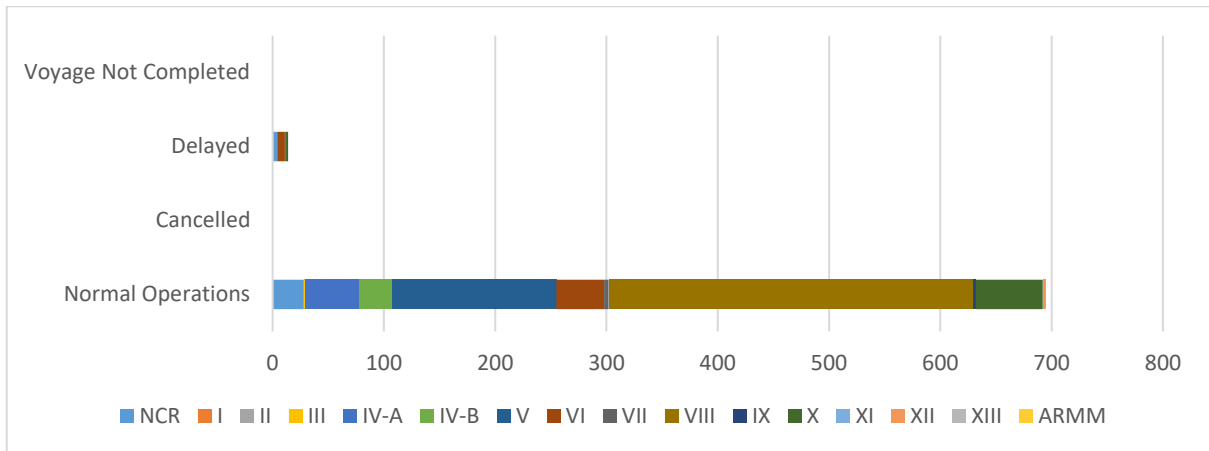
- 709** Shipping Operations Recorded
- 288** Passenger Ships Operated
- 421** Cargo Ships Operated
- 695** Ships Operated Normally
- 0** Operations Cancelled
- 14** Operations Delayed
- 0** Operation Uncompleted

**PASSENGER AND CARGO SHIPPING OPERATIONS IN THE PHILIPPINES
IN AREAS UNDER MGCQ and GCQ**



Total of 709 Passenger and Cargo Shipping Operations

I. STATUS OF SHIPPING OPERATIONS NATIONWIDE



On Feb. 04 - 10, 2022, there were 709 passenger and cargo shipping operations conducted wherein 695 or 98% were completed in accordance with their Certificate of Public Convenience (CPC).

Out of the 695 operations completed under normal conditions, the reported movements were mostly in the Eastern Visayas Region at 47% and Bicol Region at 21%.

Fourteen (14) passenger ships or 5% encountered delays due to the additional measures adopted in view of COVID-19 such as temperature screening and inspections.

No shipping operations were not completed at the time of reporting, as the respective ships were still underway.

II. STATUS OF SHIPPING OPERATIONS BY CLASSIFICATION

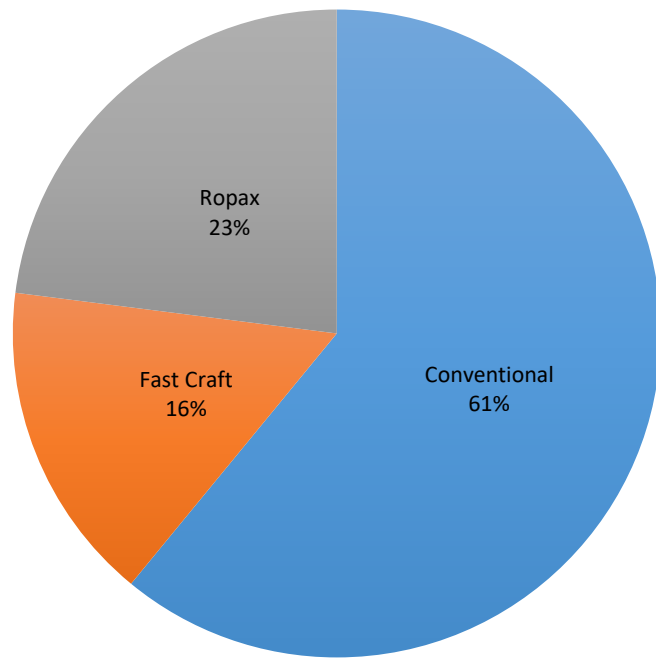
Region	Normal Operations		Cancelled		Delayed		Not Completed	
	Passenger	Cargo	Passenger	Cargo	Passenger	Cargo	Passenger	Cargo
NCR	8	20	-	-	4	-	-	-
I	-	-	-	-	-	-	-	-
II	-	-	-	-	-	-	-	-
III	-	1	-	-	-	-	-	-
IV-A	49	-	-	-	-	-	-	-
IV-B	29	-	-	-	-	-	-	-
V	35	113	-	-	-	-	-	-
VI	15	28	-	-	7	-	-	-
VII	2	2	-	-	1	-	-	-
VIII	123	205	-	-	-	-	-	-
IX	-	2	-	-	-	-	-	-
X	13	47	-	-	2	-	-	-
XI	-	1	-	-	-	-	-	-
XII	-	2	-	-	-	-	-	-
XIII	-	-	-	-	-	-	-	-
ARMM	-	-	-	-	-	-	-	-
Total	274	421	-	-	14	-	-	-

Amid the measures in place due to MGCQ, and GCQ, 421 out of 421 (100%) cargo ships still operated normally – are 35 bulk carrier, 36 container ships, 56 LCT ships, 2 oil tankers, 291 Roro cargo ships.

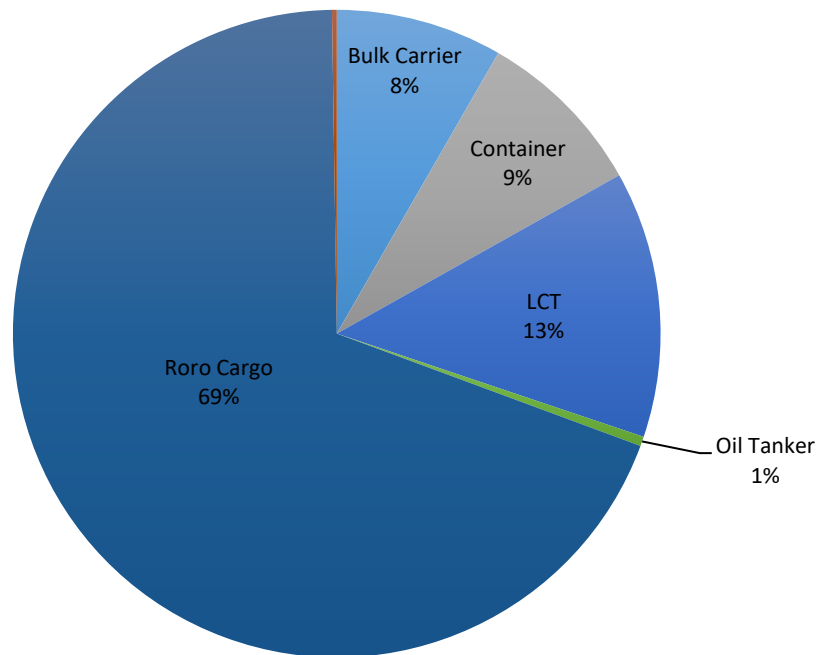
Two hundred and seventy-four (274) passenger ships completed their voyage – 167 conventional passenger ships, 63 RoPax ships and 44 fast craft ferry completed their operations but mostly only carried cargoes during their voyage.

Meanwhile out of the 288 passenger ships, 5% were affected by the measures adopted in view of COVID-19. These measures caused either the cancellation, delay, or uncompleted operations of 14 passenger ships.

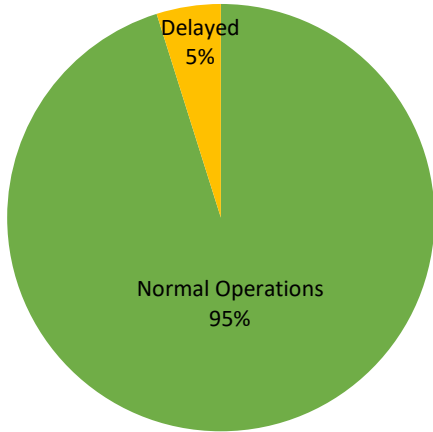
Passenger Ship Types under Normal Operations



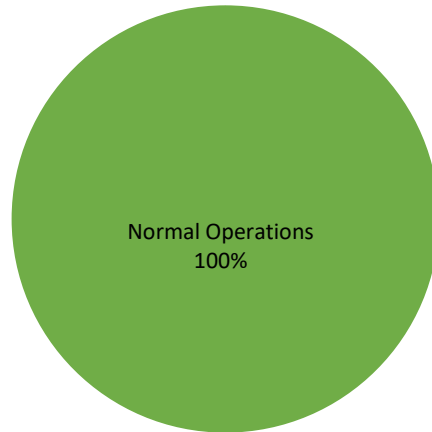
Cargo Ship Types under Normal Operations



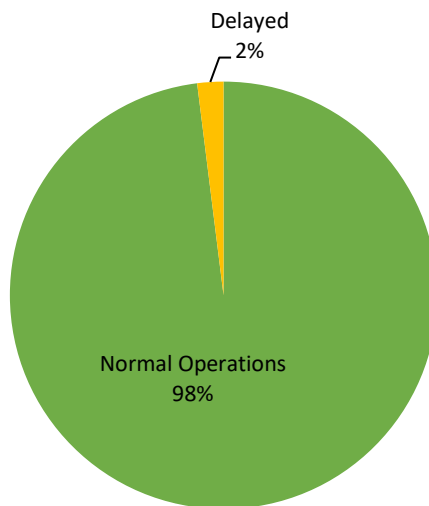
**PASSENGER
Ship Operations**



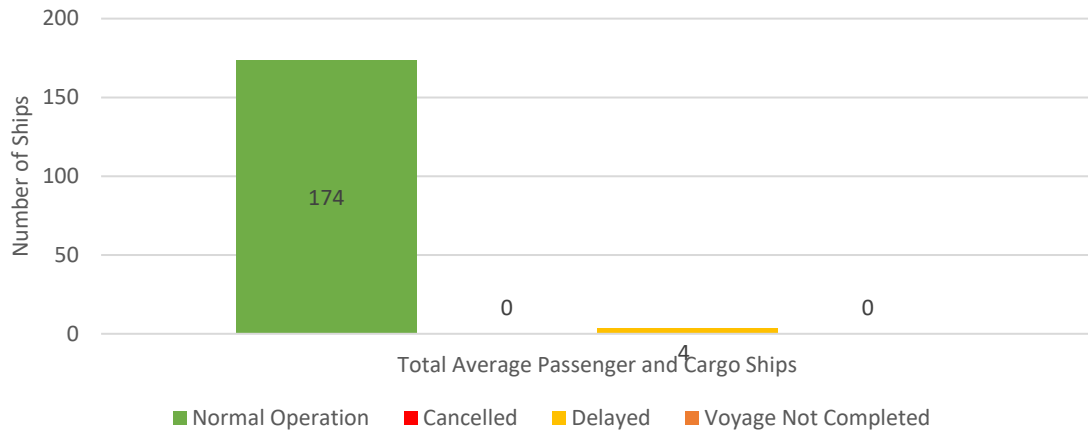
**CARGO
Ship Operations**



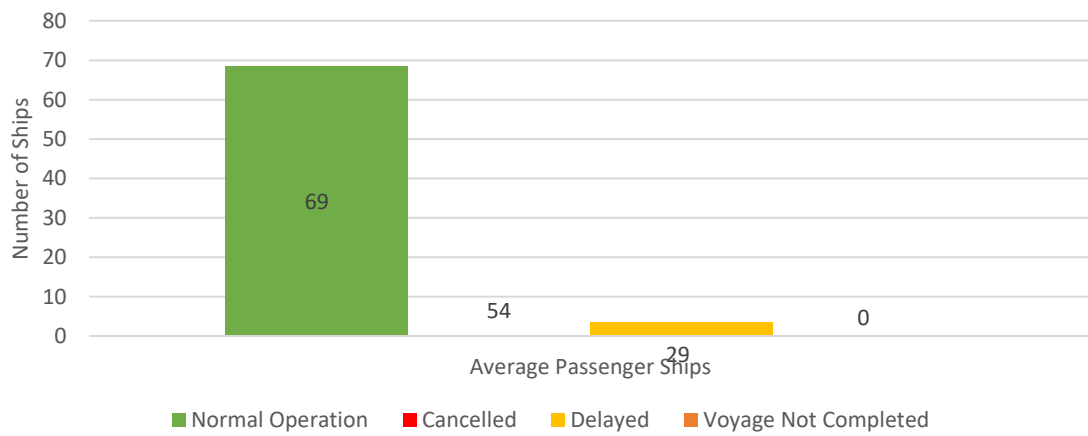
**PASSENGER and CARGO
Ship Operations**



Daily Average Passenger and Cargo Ship Operation



Daily Average Passenger Ship Operation



Daily Average Cargo Ship Operation

