



MARITIME INDUSTRY AUTHORITY
WEEKLY SUMMARY SITUATION REPORT - Summary 107
 Passenger and Cargo Shipping Operations on Apr 04 - 10, 2022
 in areas under Alert Level 1 & 2

Data generated on Apr 04 - 10, 2022, 3:00 PM

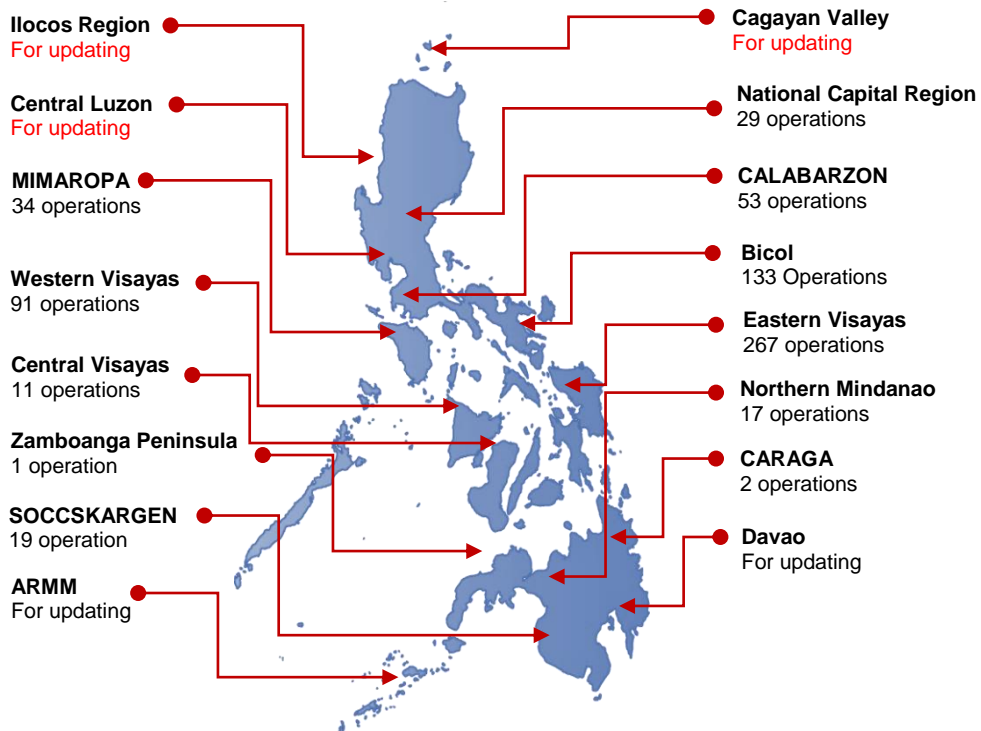
HIGHLIGHTS

- Ninety-eight percent (98%) of passenger and cargo shipping operations were completed in accordance with the ships' CPC.
- Two percent (2%) of the shipping operations were affected.
- Operations of passenger ships were more affected compared to cargo ships. 100% of the cargo shipping operations were completed under normal conditions compared to passenger ships at 95%.
- Daily average passenger and cargo ship operations are 161 completed under normal conditions, 0 cancelled trips, 4 delayed and 0 not completed voyage.
- **With cargo shipping still operational, transport of goods amid MGCQ, and GCQ is assured.**

PASSENGER AND CARGO SHIPPING IN NUMBERS
Apr 04 - 10, 2022

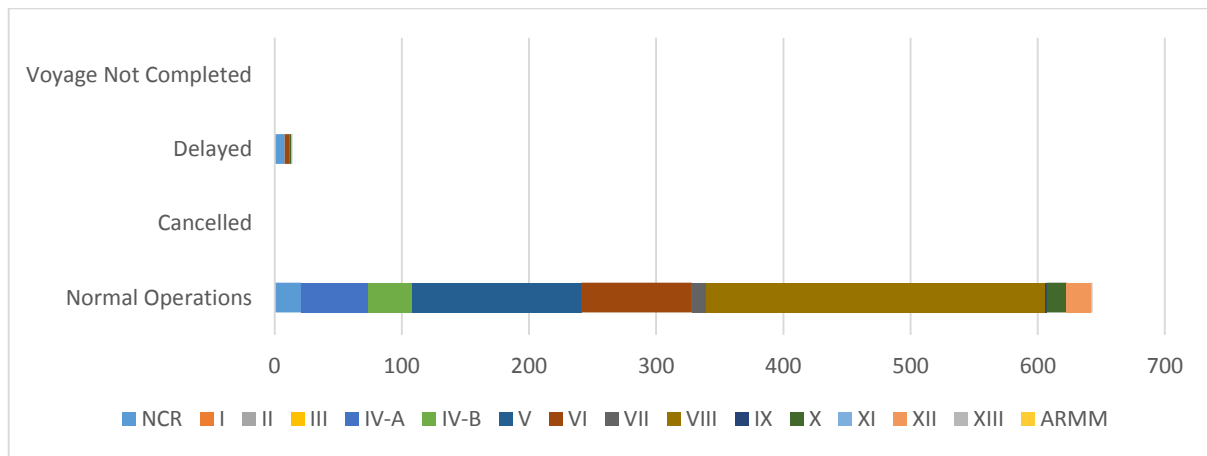
- 657** Shipping Operations Recorded
- 256** Passenger Ships Operated
- 401** Cargo Ships Operated
- 643** Ships Operated Normally
- 0** Operations Cancelled
- 14** Operations Delayed
- 0** Operation Uncompleted

PASSENGER AND CARGO SHIPPING OPERATIONS IN THE PHILIPPINES
IN AREAS UNDER Alert Level 1 & 2



Total of 657 Passenger and Cargo Shipping Operations

I. STATUS OF SHIPPING OPERATIONS NATIONWIDE



On Apr 04 - 10, 2022, there were 657 passenger and cargo shipping operations conducted wherein 643 or 98% were completed in accordance with their Certificate of Public Convenience (CPC).

Out of the 643 operations completed under normal conditions, the reported movements were mostly in the Eastern Visayas Region at 42% and Bicol Region at 21%.

Fourteen (14) passenger ships or 5% encountered delays.

No shipping operations were not completed at the time of reporting, as the respective ships were still underway.

II. STATUS OF SHIPPING OPERATIONS BY CLASSIFICATION

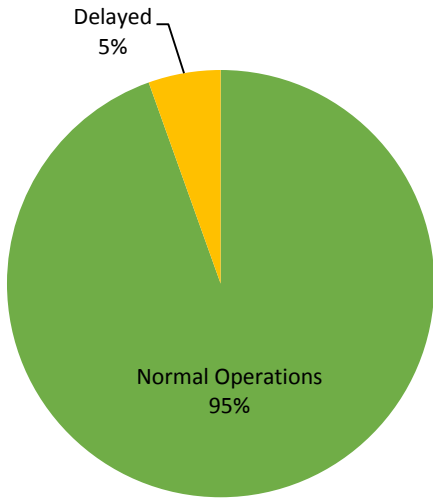
Region	Normal Operations		Cancelled		Delayed		Not Completed	
	Passenger	Cargo	Passenger	Cargo	Passenger	Cargo	Passenger	Cargo
NCR	4	17	-	-	8	-	-	-
I	-	-	-	-	-	-	-	-
II	-	-	-	-	-	-	-	-
III	-	-	-	-	-	-	-	-
IV-A	53	-	-	-	-	-	-	-
IV-B	34	-	-	-	-	-	-	-
V	25	108	-	-	-	-	-	-
VI	21	66	-	-	4	-	-	-
VII	6	5	-	-	-	-	-	-
VIII	96	171	-	-	-	-	-	-
IX	1	-	-	-	-	-	-	-
X	1	15	-	-	1	-	-	-
XI	-	-	-	-	-	-	-	-
XII	-	19	-	-	-	-	-	-
XIII	1	-	-	-	1	-	-	-
ARMM	-	-	-	-	-	-	-	-
Total	242	401	-	-	14	-	-	-

Amid the measures in place due to MGCQ, and GCQ, 401 out of 401 (100%) cargo ships still operated normally – are 18 bulk carrier, 34 container ships, 6 general cargo ships, 46 LCT ships, 297 Roro cargo ships.

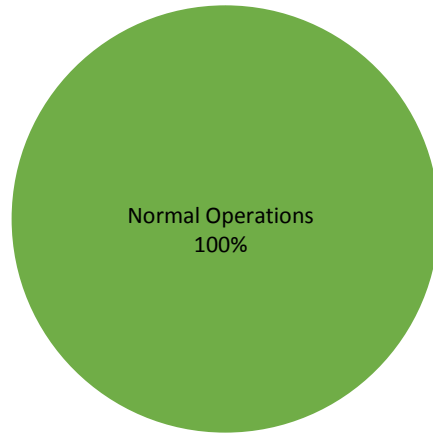
Two hundred forty – two (242) passenger ships completed their voyage – 152 conventional passenger ships, 51 RoPax ships and 39 fast craft ferry completed their operations but mostly only carried cargoes during their voyage.

Meanwhile out of the 256 passenger ships, 5% were affected either by cancellation, delay, or uncompleted operations of 14 passenger ships.

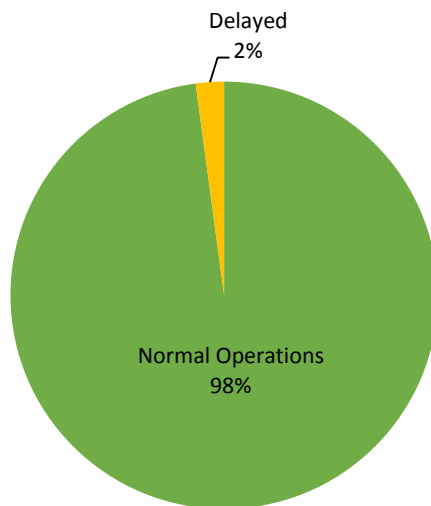
PASSENGER Ship Operations



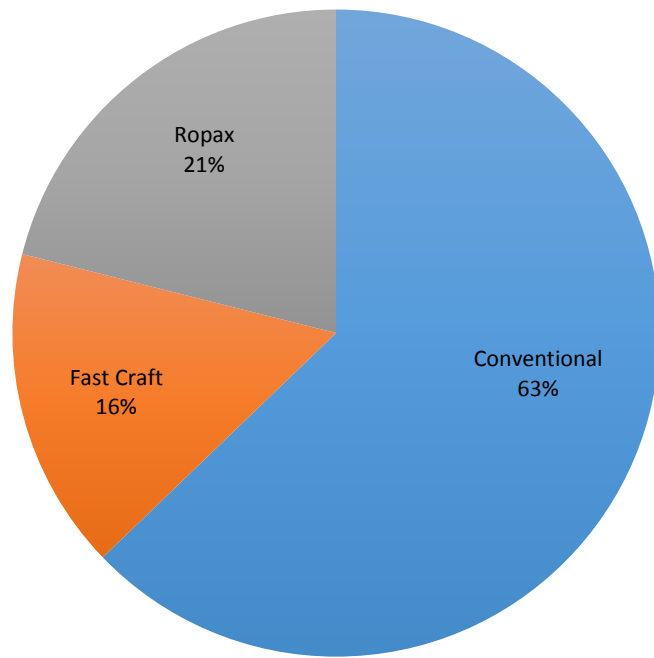
CARGO Ship Operations



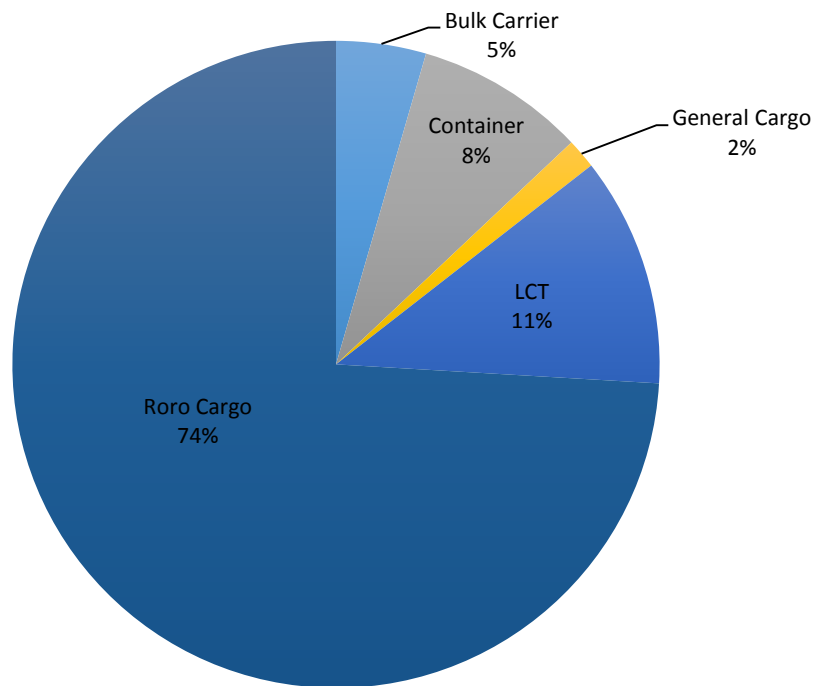
PASSENGER and CARGO Ship Operations



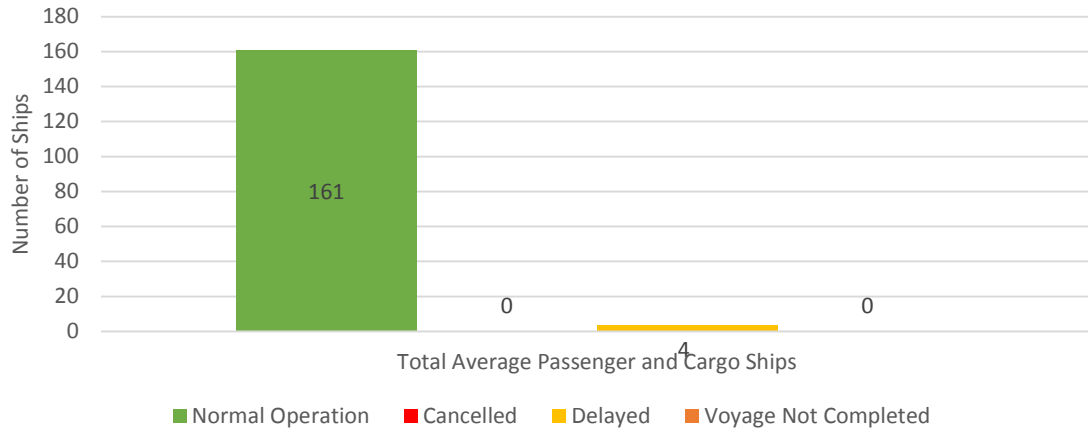
Passenger Ship Types under Normal Operations



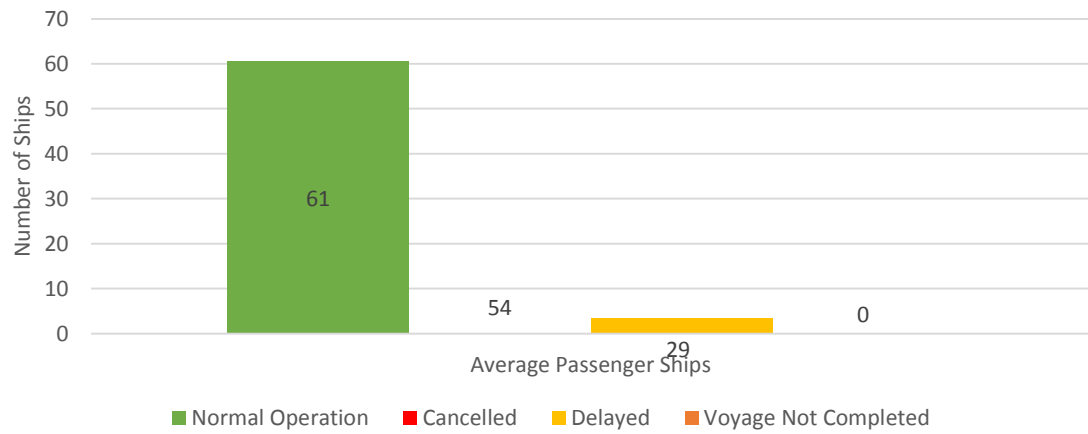
Cargo Ship Types under Normal Operations



Daily Average Passenger and Cargo Ship Operation



Daily Average Passenger Ship Operation



Daily Average Cargo Ship Operation

