



**MARITIME INDUSTRY AUTHORITY**  
**WEEKLY SUMMARY SITUATION REPORT - Summary 108**  
 Passenger and Cargo Shipping Operations on Apr. 08 - 14, 2022  
 in areas under Alert Level 1 & 2

*Data generated on Apr. 08 - 14, 2022, 3:00 PM*

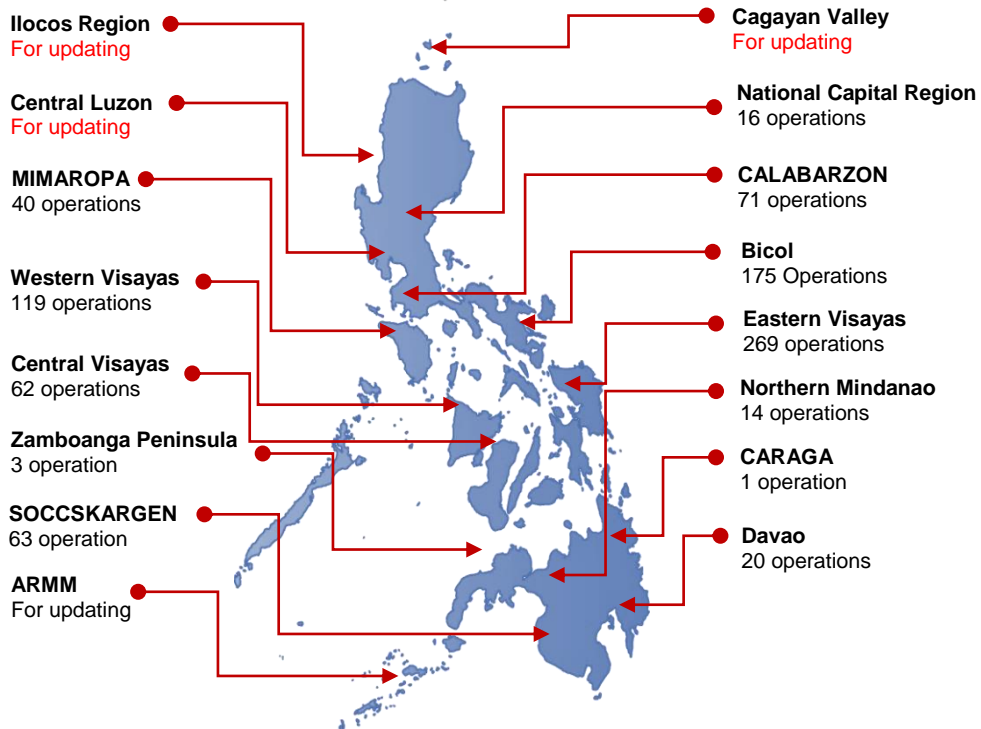
**HIGHLIGHTS**

- Ninety-eight percent (98%) of passenger and cargo shipping operations were completed in accordance with the ships' CPC.
- Two percent ( 2%) of the shipping operations were affected.
- Operations of passenger ships were more affected compared to cargo ships. 100% of the cargo shipping operations were completed under normal conditions compared to passenger ships at 96%.
- Daily average passenger and cargo ship operations are 209 completed under normal conditions, 0 cancelled trips, 5 delayed and 0 not completed voyage.
- **With cargo shipping still operational, transport of goods amid MGCQ, and GCQ is assured.**

**PASSENGER AND CARGO SHIPPING IN NUMBERS**  
Apr. 08 - 14, 2022

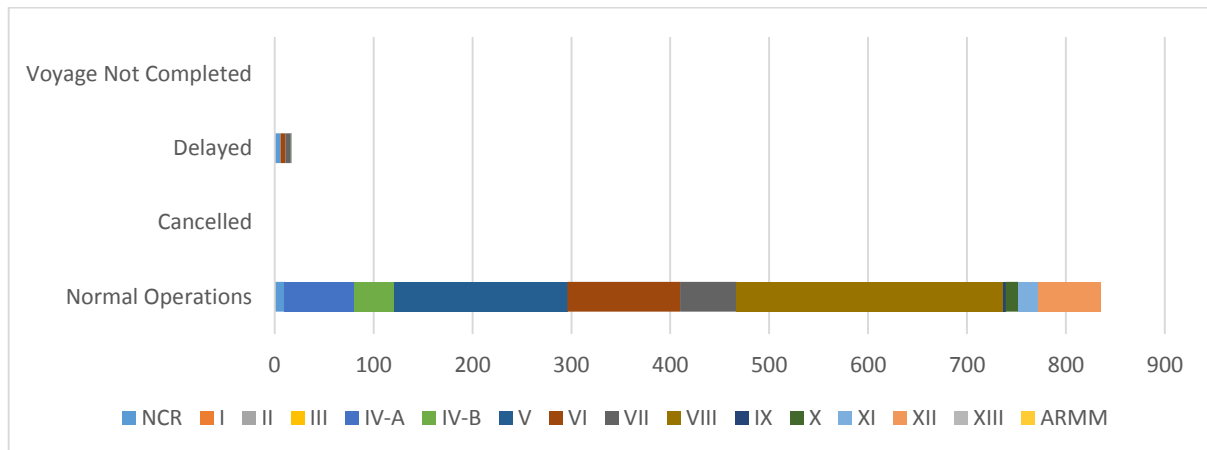
- 853** Shipping Operations Recorded
- 381** Passenger Ships Operated
- 472** Cargo Ships Operated
- 835** Ships Operated Normally
- 0** Operations Cancelled
- 18** Operations Delayed
- 0** Operation Uncompleted

**PASSENGER AND CARGO SHIPPING OPERATIONS IN THE PHILIPPINES IN AREAS UNDER MGCQ and GCQ**



**Total of 853 Passenger and Cargo Shipping Operations**

## I. STATUS OF SHIPPING OPERATIONS NATIONWIDE



On Apr. 08 - 14, 2022, there were 853 passenger and cargo shipping operations conducted wherein 835 or 98% were completed in accordance with their Certificate of Public Convenience (CPC).

Out of the 835 operations completed under normal conditions, the reported movements were mostly in the Eastern Visayas Region at 32% and Bicol Region at 21%.

Seventeen (17) passenger ships or 4% encountered delays.

No shipping operations were not completed at the time of reporting, as the respective ships were still underway.

## II. STATUS OF SHIPPING OPERATIONS BY CLASSIFICATION

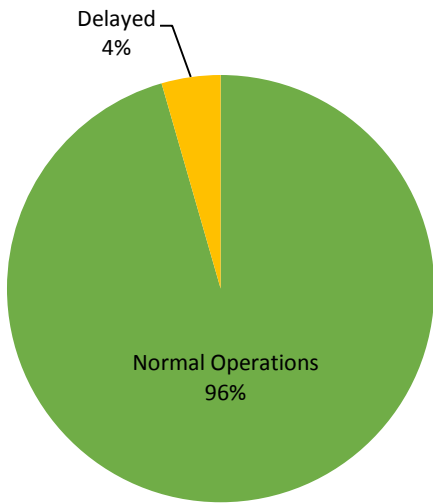
Region	Normal Operations		Cancelled		Delayed		Not Completed	
	Passenger	Cargo	Passenger	Cargo	Passenger	Cargo	Passenger	Cargo
<b>NCR</b>	<b>4</b>	<b>6</b>	-	-	<b>6</b>	-	-	-
<b>I</b>	-	-	-	-	-	-	-	-
<b>II</b>	-	-	-	-	-	-	-	-
<b>III</b>	-	-	-	-	-	-	-	-
<b>IV-A</b>	<b>71</b>	-	-	-	-	-	-	-
<b>IV-B</b>	<b>40</b>	-	-	-	-	-	-	-
<b>V</b>	<b>34</b>	<b>141</b>	-	-	-	-	-	-
<b>VI</b>	<b>83</b>	<b>31</b>	-	-	<b>5</b>	-	-	-
<b>VII</b>	<b>30</b>	<b>27</b>	-	-	<b>5</b>	-	-	-
<b>VIII</b>	<b>97</b>	<b>172</b>	-	-	-	-	-	-
<b>IX</b>	<b>2</b>	<b>1</b>	-	-	-	-	-	-
<b>X</b>	<b>3</b>	<b>10</b>	-	-	-	<b>1</b>	-	-
<b>XI</b>	-	<b>20</b>	-	-	-	-	-	-
<b>XII</b>	-	<b>63</b>	-	-	-	-	-	-
<b>XIII</b>	-	-	-	-	<b>1</b>	-	-	-
<b>ARMM</b>	-	-	-	-	-	-	-	-
<b>Total</b>	<b>364</b>	<b>471</b>	-	-	<b>17</b>	<b>1</b>	-	-

Amid the measures in place due to MGCQ, and GCQ, 471 out of 472 (100%) cargo ships still operated normally – are 22 bulk carrier, 13 container ships, 17 general cargo ships, 38 LCT ships, 1 oil tankers, 372 Roro cargo ships.

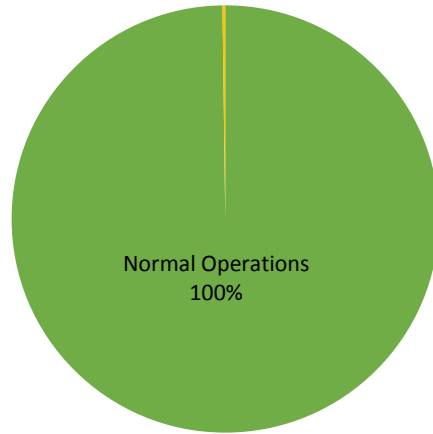
Three-hundred sixty four (364) passenger ships completed their voyage – 266 conventional passenger ships, 55 RoPax ships and 43 fast craft ferry completed their operations but mostly only carried cargoes during their voyage.

Meanwhile out of the 381 passenger ships, 4% were affected either by cancellation, delay, or uncompleted operations of 17 passenger ships.

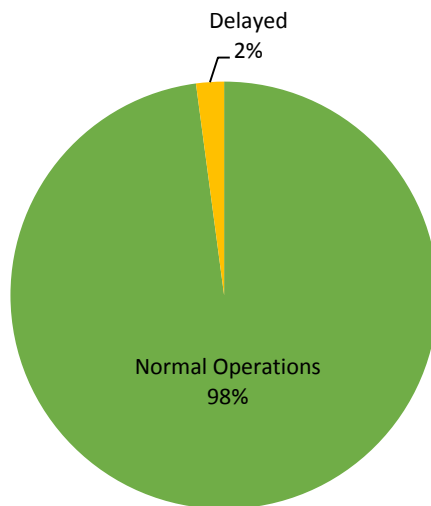
### PASSENGER Ship Operations



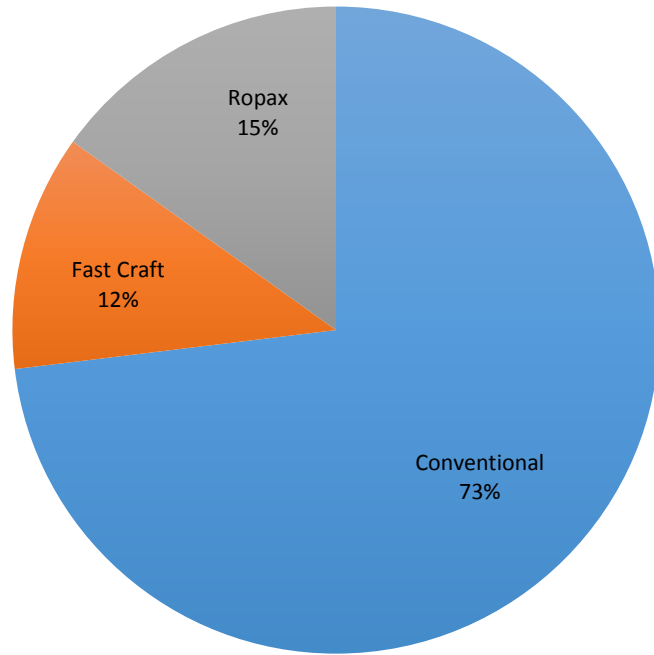
### CARGO Ship Operations



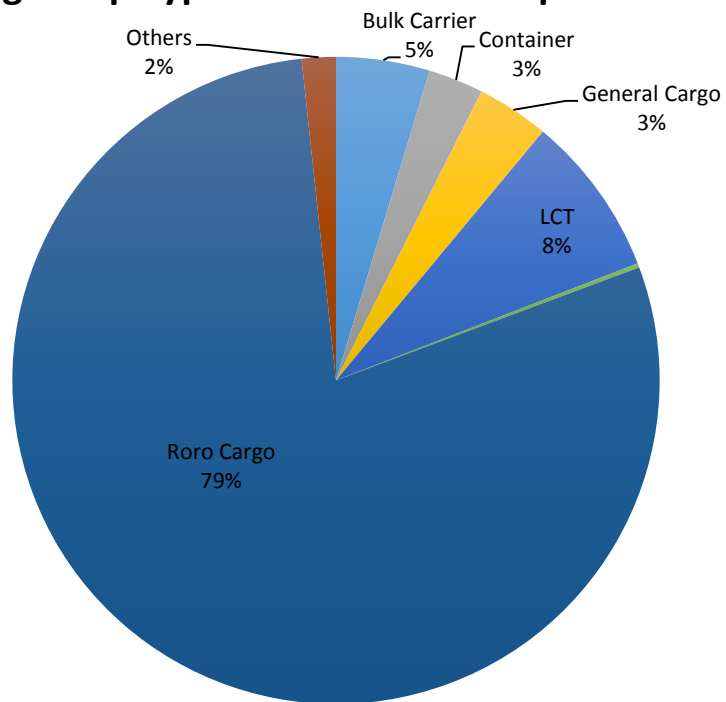
### PASSENGER and CARGO Ship Operations



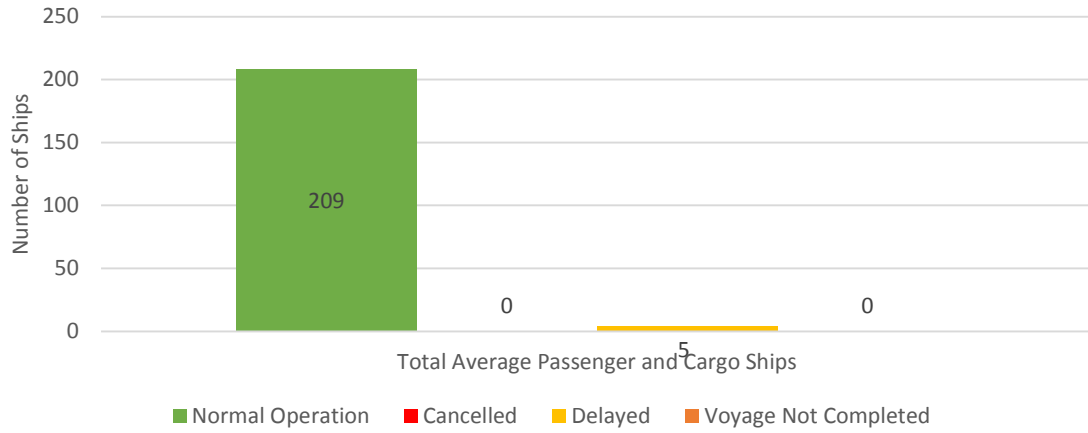
## Passenger Ship Types under Normal Operations



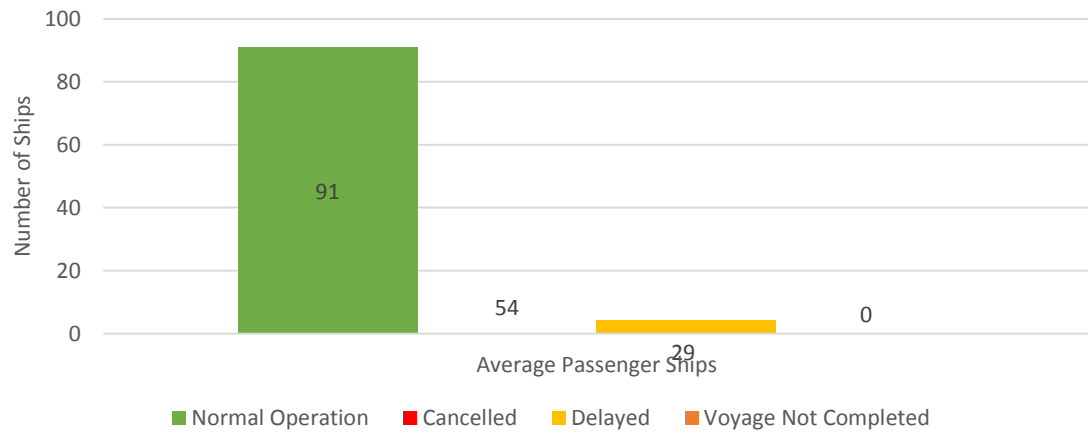
## Cargo Ship Types under Normal Operations



### Daily Average Passenger and Cargo Ship Operation



### Daily Average Passenger Ship Operation



### Daily Average Cargo Ship Operation

