



MARITIME INDUSTRY AUTHORITY
WEEKLY SUMMARY SITUATION REPORT - Summary 110
 Passenger and Cargo Shipping Operations on April 22 - 28, 2022
 in areas under Alert Level 1 & 2

Data generated on April 22 - 28, 2022, 3:00 PM

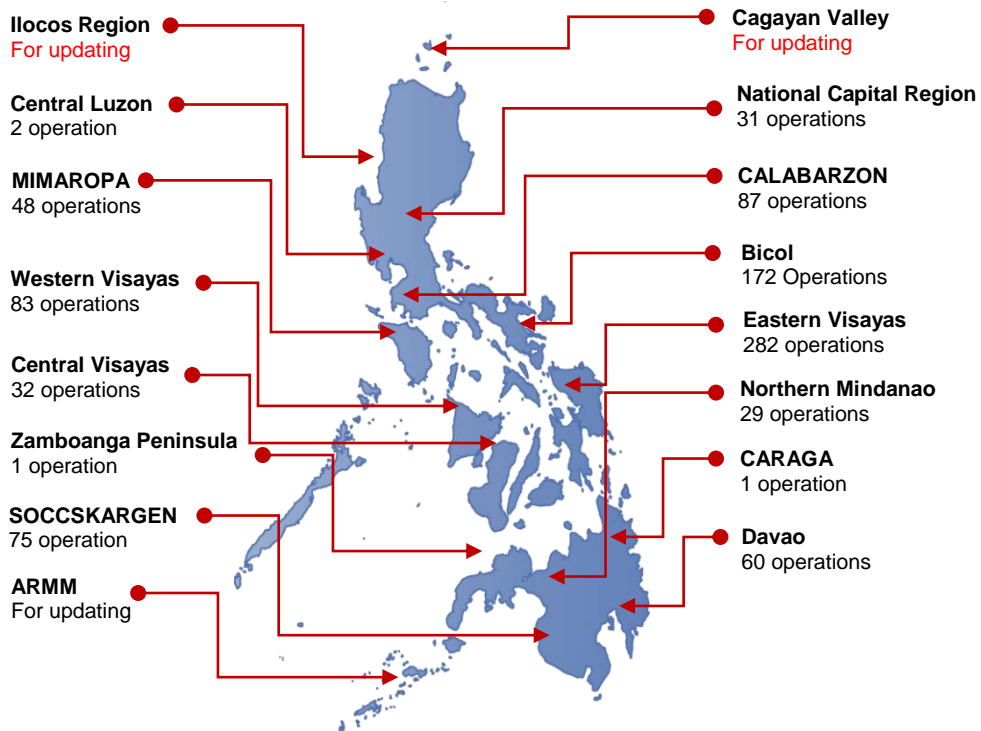
HIGHLIGHTS

- Ninety-eight percent (98%) of passenger and cargo shipping operations were completed in accordance with the ships' CPC.
- Two percent (2%) of the shipping operations were affected under alert level 1 & 2.
- Operations of passenger ships were more affected compared to cargo ships. 100% of the cargo shipping operations were completed under normal conditions compared to passenger ships at 94%.
- Daily average passenger and cargo ship operations are 221 completed under normal conditions, 0 cancelled trips, 5 delayed and 0 not completed voyage.
- **With cargo shipping still operational, transport of goods amid MGCQ, and GCQ is assured.**

PASSENGER AND CARGO SHIPPING IN NUMBERS
 April 22 - 28, 2022

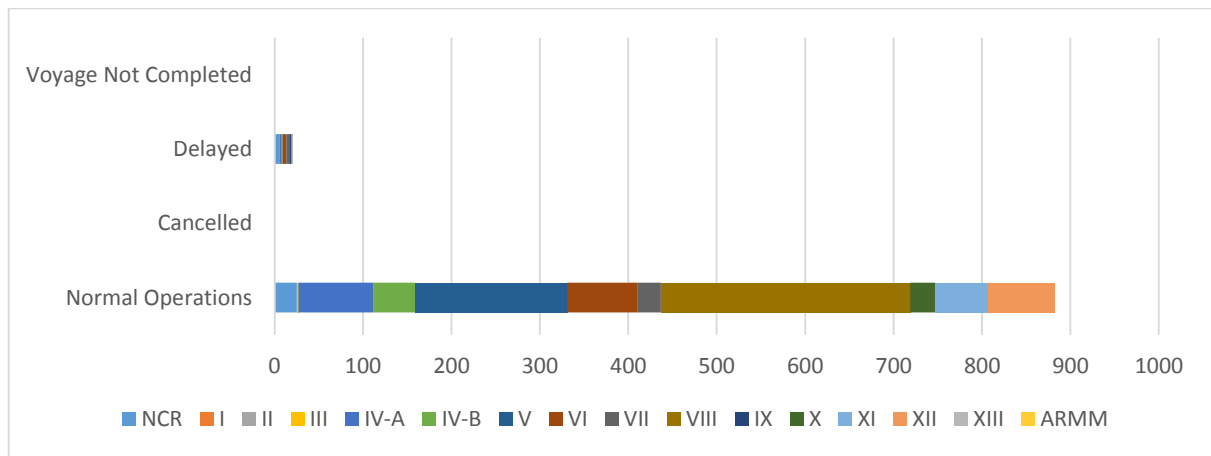
- 903** Shipping Operations Recorded
- 345** Passenger Ships Operated
- 558** Cargo Ships Operated
- 882** Ships Operated Normally
- 0** Operations Cancelled
- 21** Operations Delayed
- 0** Operation Uncompleted

**PASSENGER AND CARGO SHIPPING OPERATIONS IN THE PHILIPPINES
 IN AREAS UNDER ALERT LEVEL 1 & 2**



Total of 903 Passenger and Cargo Shipping Operations

I. STATUS OF SHIPPING OPERATIONS NATIONWIDE



On April 22 - 28, 2022, there were 903 passenger and cargo shipping operations conducted wherein 882 or 98% were completed in accordance with their Certificate of Public Convenience (CPC).

Out of the 882 operations completed under normal conditions, the reported movements were mostly in the Eastern Visayas Region at 32% and Bicol Region at 20%.

Twenty – one (21) passenger ships or 6% encountered delays due to the additional measures adopted in view of COVID-19 such as temperature screening and inspections.

No shipping operations were not completed at the time of reporting, as the respective ships were still underway.

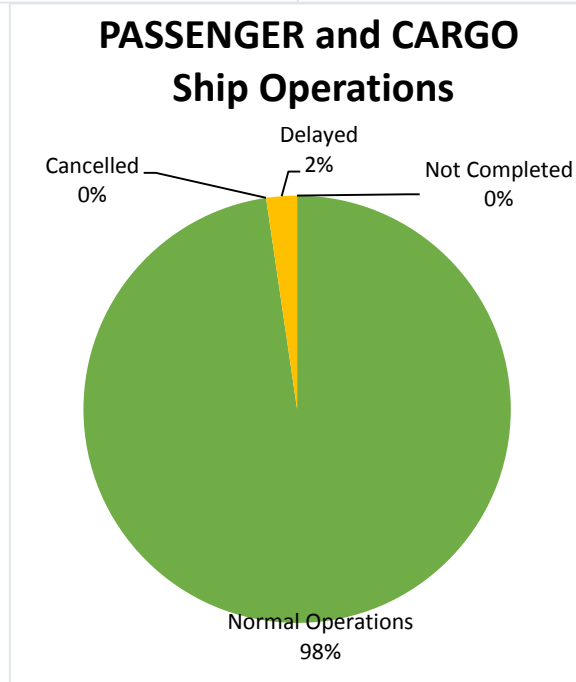
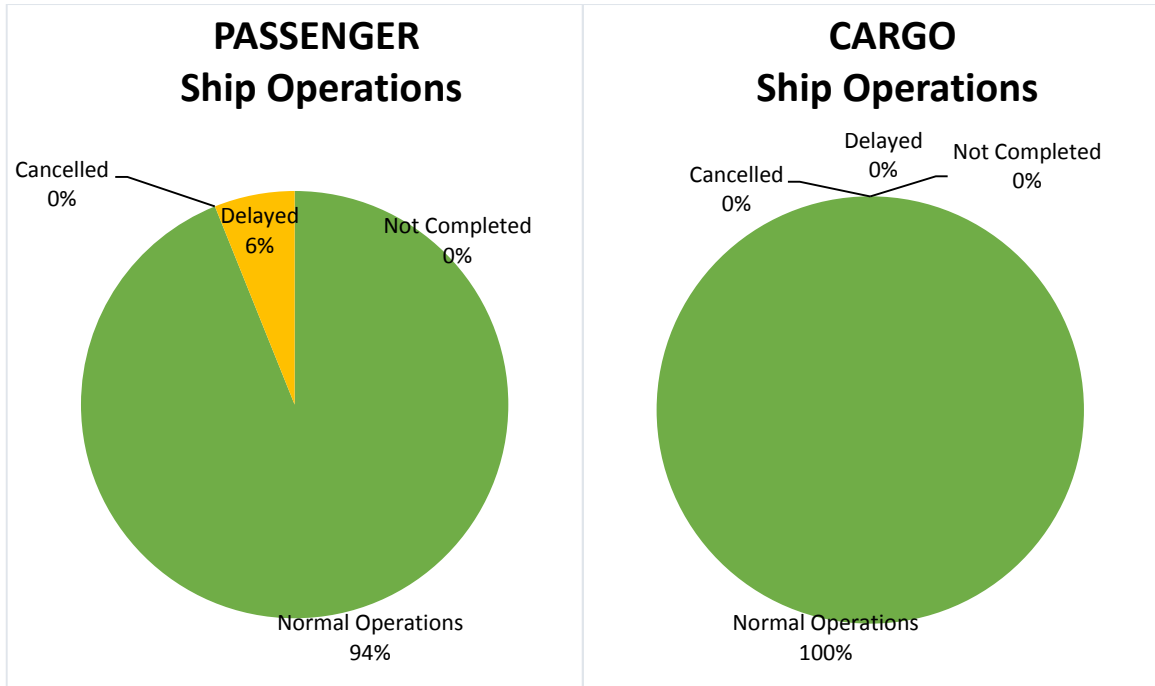
II. STATUS OF SHIPPING OPERATIONS BY CLASSIFICATION

Region	Normal Operations		Cancelled		Delayed		Not Completed	
	Passenger	Cargo	Passenger	Cargo	Passenger	Cargo	Passenger	Cargo
NCR	8	17	-	-	6	-	-	-
I	-	-	-	-	-	-	-	-
II	-	-	-	-	-	-	-	-
III	1	1	-	-	-	-	-	-
IV-A	85	-	-	-	2	-	-	-
IV-B	47	-	-	-	1	-	-	-
V	40	132	-	-	-	-	-	-
VI	28	51	-	-	4	-	-	-
VII	16	11	-	-	5	-	-	-
VIII	93	189	-	-	-	-	-	-
IX	-	-	-	-	1	-	-	-
X	2	26	-	-	1	-	-	-
XI	2	58	-	-	-	-	-	-
XII	2	73	-	-	-	-	-	-
XIII	-	-	-	-	1	-	-	-
ARMM	-	-	-	-	-	-	-	-
Total	324	558	-	-	21	-	-	-

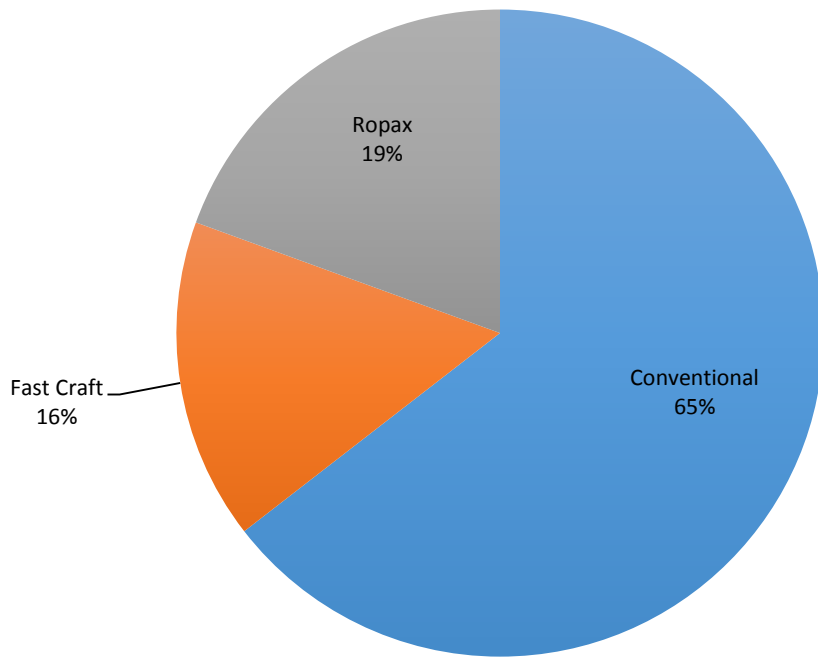
Amid the measures in place due to MGCQ, and GCQ, 558 out of 558 (100%) cargo ships still operated normally – are 26 bulk carrier, 35 container ships, 13 general cargo ships, 75 LCT ships, 1 oil tankers, 407 Roro cargo ships.

Three-hundred twenty four (324) passenger ships completed their voyage – 209 conventional passenger ships, 63 RoPax ships and 52 fast craft ferry completed their operations but mostly only carried cargoes during their voyage.

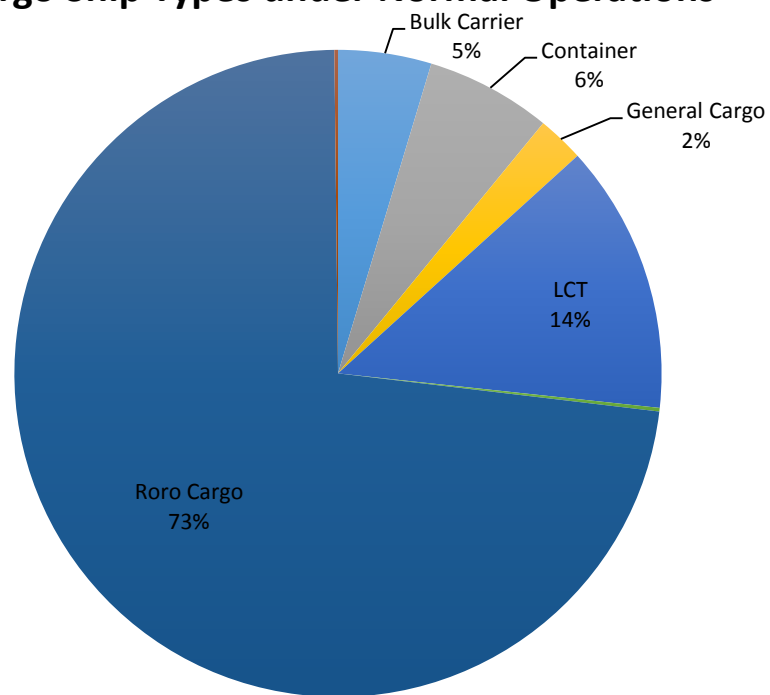
Meanwhile out of the 345 passenger ships, 6% were affected by the measures adopted in view of COVID-19. These measures caused either the cancellation, delay, or uncompleted operations of 21 passenger ships.



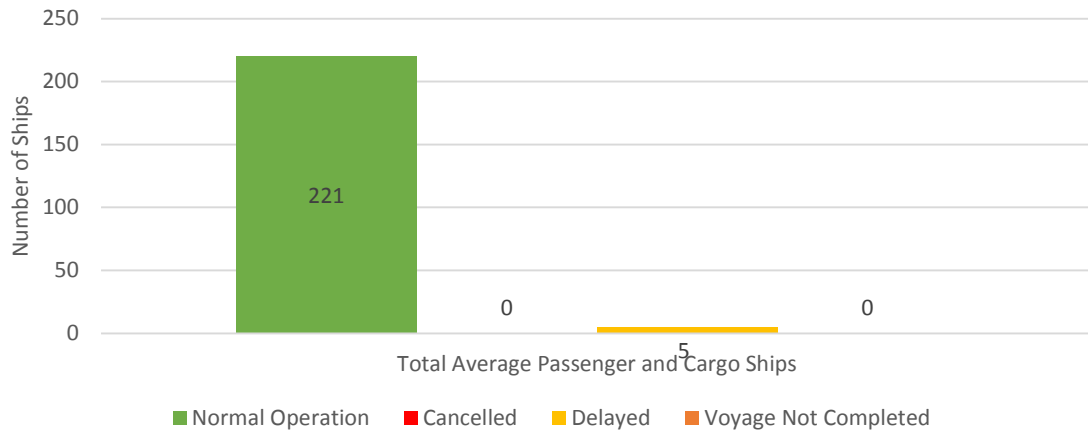
Passenger Ship Types under Normal Operations



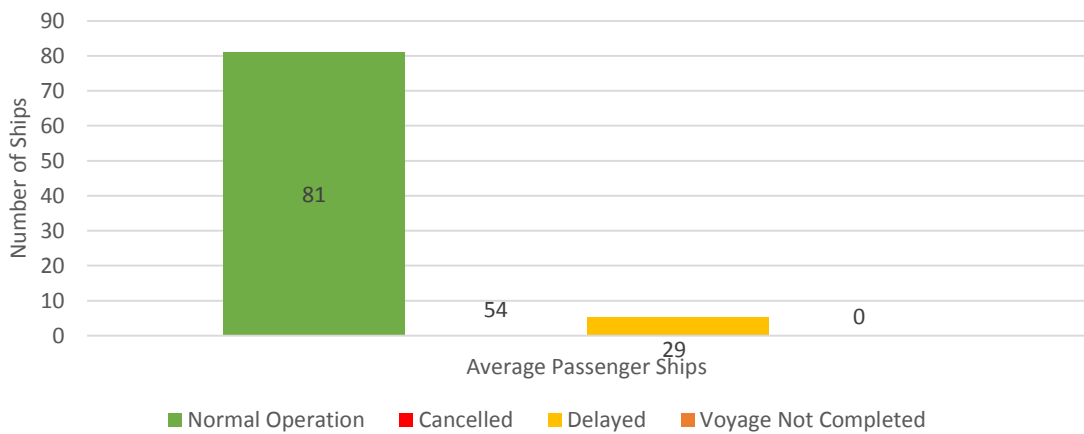
Cargo Ship Types under Normal Operations



Daily Average Passenger and Cargo Ship Operation



Daily Average Passenger Ship Operation



Daily Average Cargo Ship Operation

