



**MARITIME INDUSTRY AUTHORITY
WEEKLY SUMMARY SITUATION REPORT - Summary 111**

Passenger and Cargo Shipping Operations on Apr 29 - May 5, 2022
in areas under Alert Level 1 & 2

Data generated on Apr 29 - May 5, 2022, 3:00 PM

HIGHLIGHTS

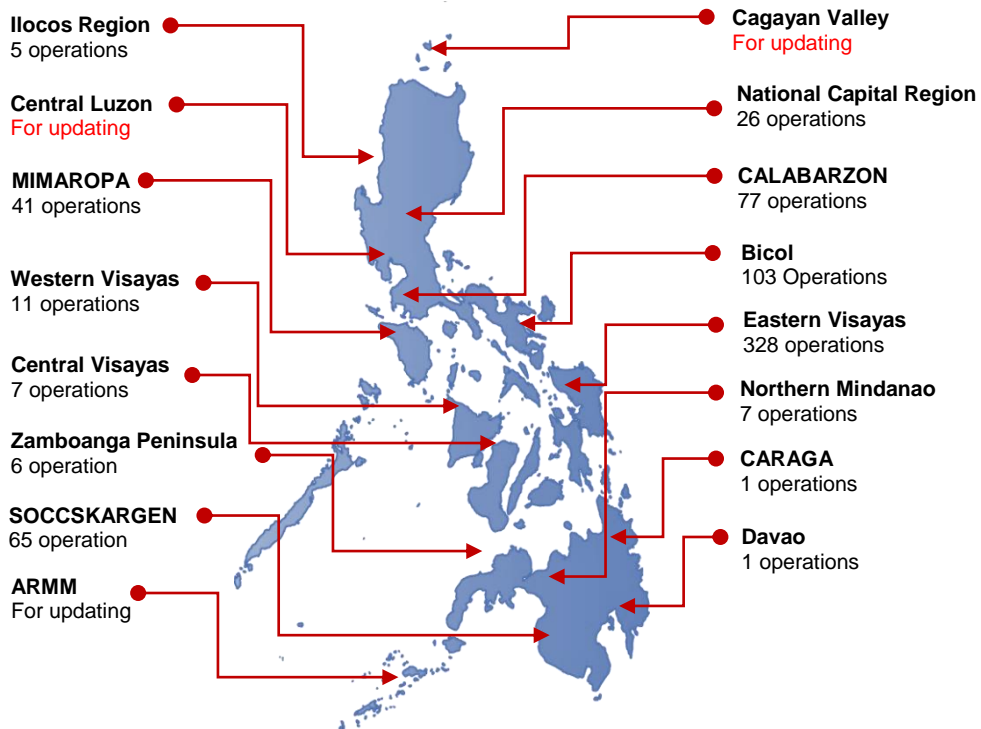
- Ninety-seven percent (97%) of passenger and cargo shipping operations were completed in accordance with the ships' CPC.
- Three percent (3%) of the shipping operations were affected due to the measures implemented in view Code Red Sublevel 2 for the COVID-19.
- Operations of passenger ships were more affected compared to cargo ships. 99% of the cargo shipping operations were completed under normal conditions compared to passenger ships at 96%.
- Daily average passenger and cargo ship operations are 165 completed under normal conditions, 0 cancelled trips, 4 delayed and 0 not completed voyage.
- **With cargo shipping still operational, transport of goods is assured.**

PASSENGER AND CARGO SHIPPING IN NUMBERS

Apr 29 - May 5, 2022

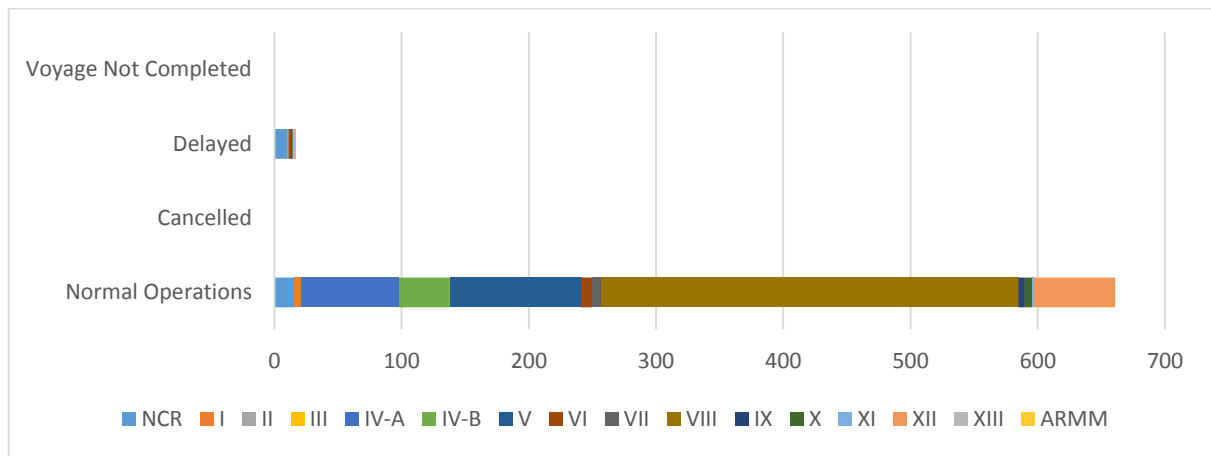
- 678** Shipping Operations Recorded
- 322** Passenger Ships Operated
- 356** Cargo Ships Operated
- 661** Ships Operated Normally
- 0** Operations Cancelled
- 17** Operations Delayed
- 0** Operation Uncompleted

**PASSENGER AND CARGO SHIPPING OPERATIONS IN THE PHILIPPINES
IN AREAS UNDER ALERT LEVEL 1 & 2**



Total of 678 Passenger and Cargo Shipping Operations

I. STATUS OF SHIPPING OPERATIONS NATIONWIDE



On Apr 29 - May 5, 2022, there were 678 passenger and cargo shipping operations conducted wherein 661 or 97% were completed in accordance with their Certificate of Public Convenience (CPC).

Out of the 661 operations completed under normal conditions, the reported movements were mostly in the Eastern Visayas Region at 50% and Bicol Region at 16%.

Fourteen (14) passenger ships or 4% encountered delays due to the additional measures adopted in view of COVID-19 such as temperature screening and inspections.

No shipping operations were not completed at the time of reporting, as the respective ships were still underway.

II. STATUS OF SHIPPING OPERATIONS BY CLASSIFICATION

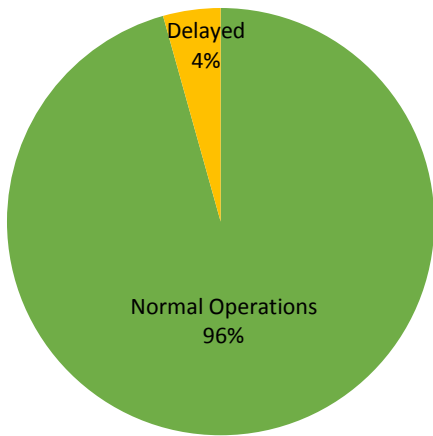
Region	Normal Operations		Cancelled		Delayed		Not Completed	
	Passenger	Cargo	Passenger	Cargo	Passenger	Cargo	Passenger	Cargo
NCR	6	10	-	-	8	2	-	-
I	5	-	-	-	-	-	-	-
II	-	-	-	-	-	-	-	-
III	-	-	-	-	-	-	-	-
IV-A	77	-	-	-	-	-	-	-
IV-B	40	-	-	-	1	-	-	-
V	22	81	-	-	-	-	-	-
VI	4	5	-	-	2	-	-	-
VII	2	5	-	-	-	-	-	-
VIII	122	206	-	-	-	-	-	-
IX	-	5	-	-	1	-	-	-
X	-	6	-	-	1	-	-	-
XI	-	1	-	-	-	-	-	-
XII	30	34	-	-	-	1	-	-
XIII	-	-	-	-	1	-	-	-
ARMM	-	-	-	-	-	-	-	-
Total	308	353	-	-	14	3	-	-

Amid the measures in place due to MGCQ, and GCQ, 353 out of 356 (99%) cargo ships still operated normally – are 16 bulk carrier, 32 container ships, 23 general cargo ships, 33 LCT ships, 2 oil tankers, 247 Roro cargo ships.

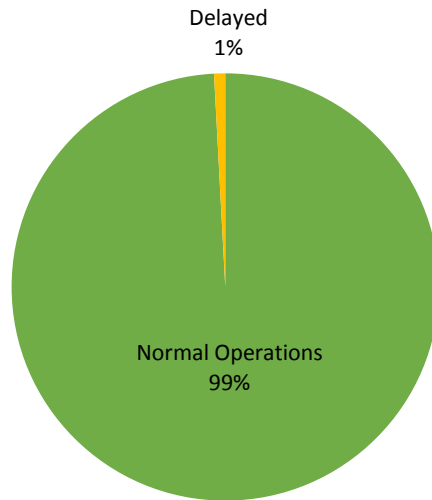
Three-hundred eight (308) passenger ships completed their voyage – 227 conventional passenger ships, 49 RoPax ships and 32 fast craft ferry completed their operations but mostly only carried cargoes during their voyage.

Meanwhile out of the 322 passenger ships, 4% were affected by the measures adopted in view of COVID-19. These measures caused either the cancellation, delay, or uncompleted operations of 14 passenger ships.

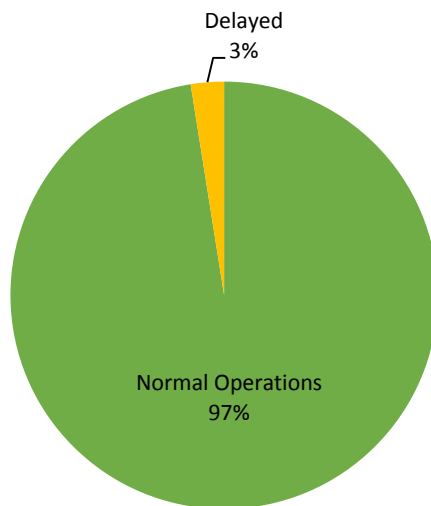
PASSENGER Ship Operations



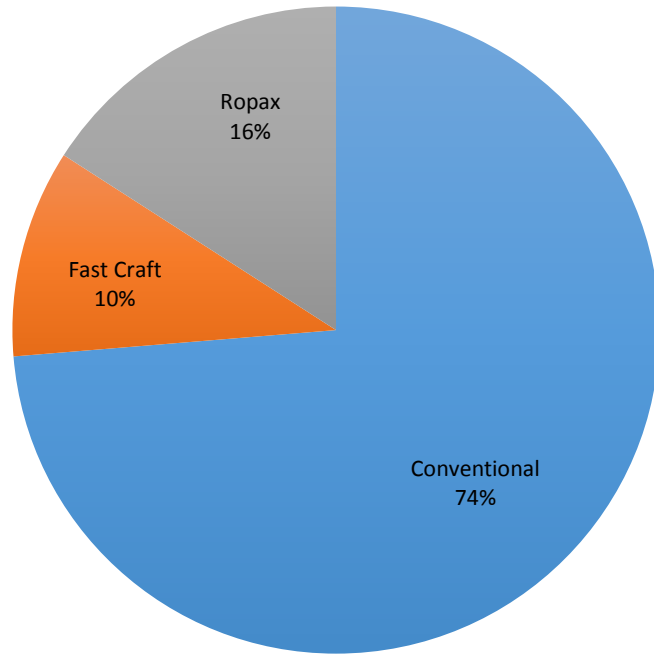
CARGO Ship Operations



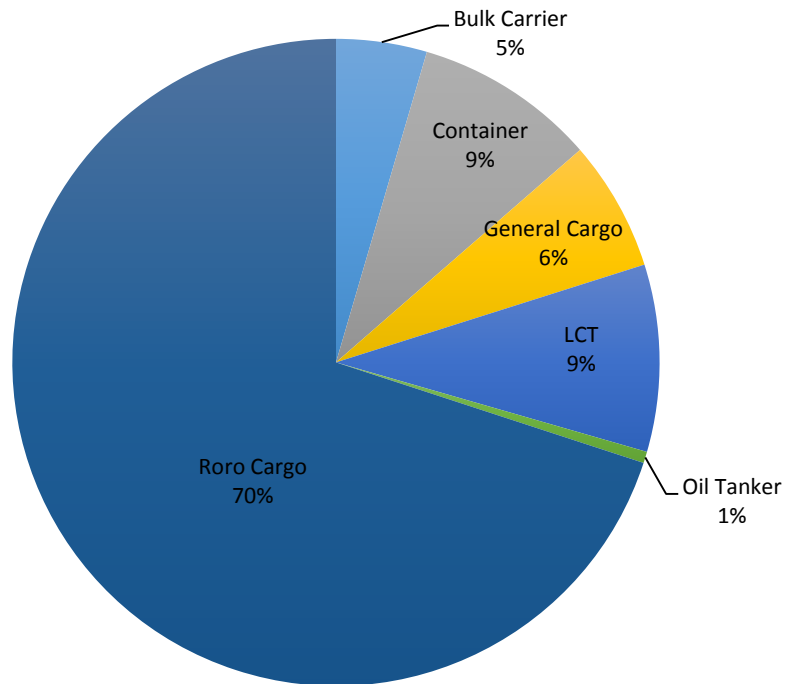
PASSENGER and CARGO Ship Operations



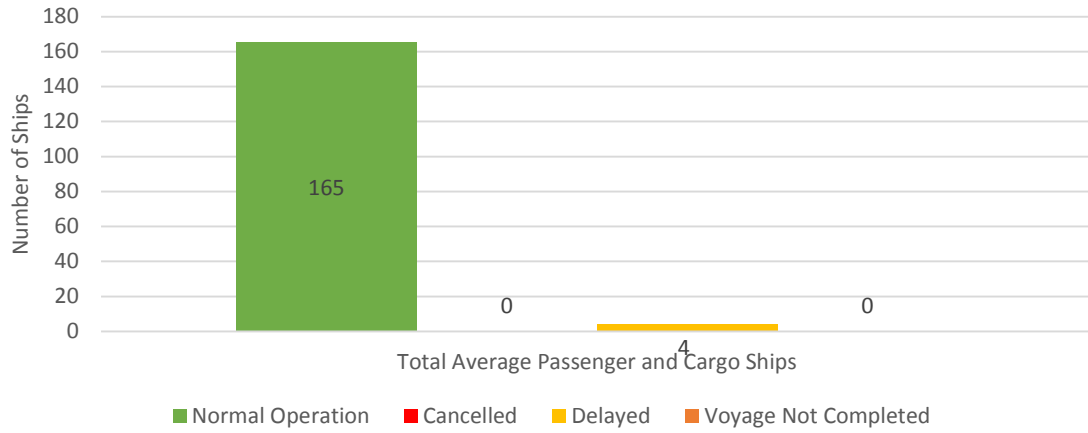
Passenger Ship Types under Normal Operations



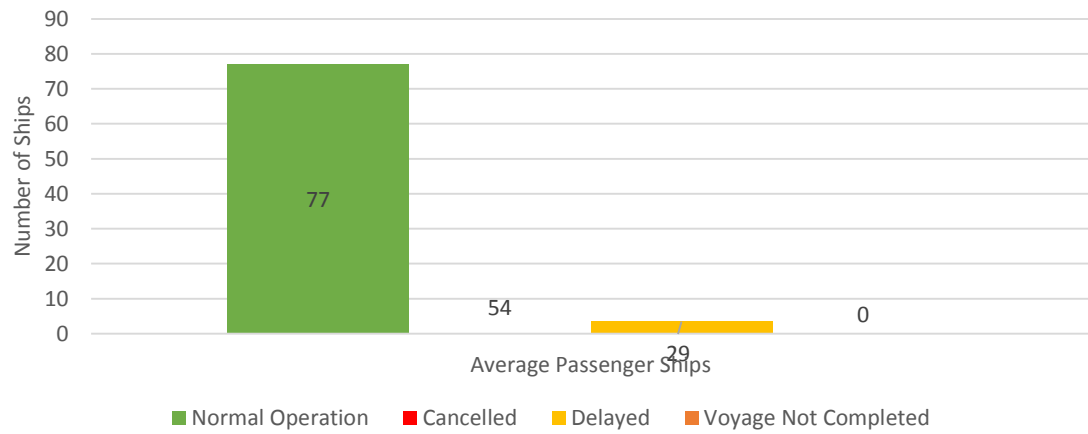
Cargo Ship Types under Normal Operations



Daily Average Passenger and Cargo Ship Operation



Daily Average Passenger Ship Operation



Daily Average Cargo Ship Operation

