



MARITIME INDUSTRY AUTHORITY
WEEKLY SUMMARY SITUATION REPORT - Summary 113
 Passenger and Cargo Shipping Operations on May 13 - 19, 2022
 in areas under Alert Level 1 & 2
Data generated on May 13 - 19, 2022, 3:00 PM

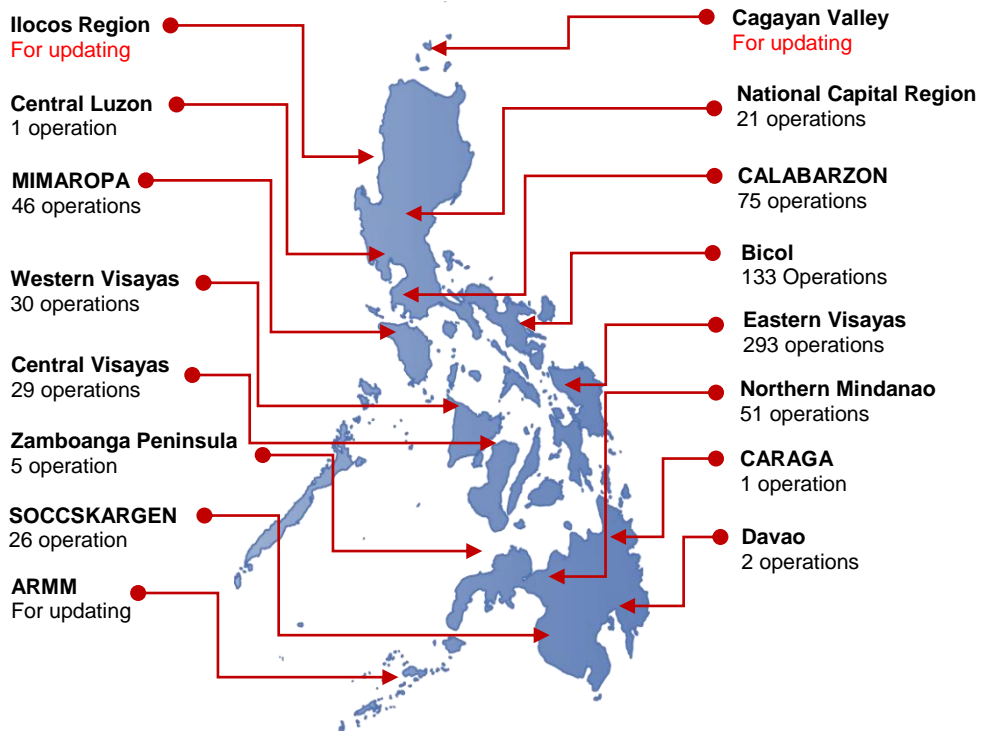
HIGHLIGHTS

- Ninety-seven percent (97%) of passenger and cargo shipping operations were completed in accordance with the ships' CPC.
- Three percent (3%) of the shipping operations were affected.
- Operations of passenger ships were more affected compared to cargo ships. 100% of the cargo shipping operations were completed under normal conditions compared to passenger ships at 93%.
- Daily average passenger and cargo ship operations are 173 completed under normal conditions, 0 cancelled trips, 6 delayed and 0 not completed voyage.
- **With cargo shipping still operational, transport of goods is assured.**

PASSENGER AND CARGO SHIPPING IN NUMBERS
 May 13 - 19, 2022

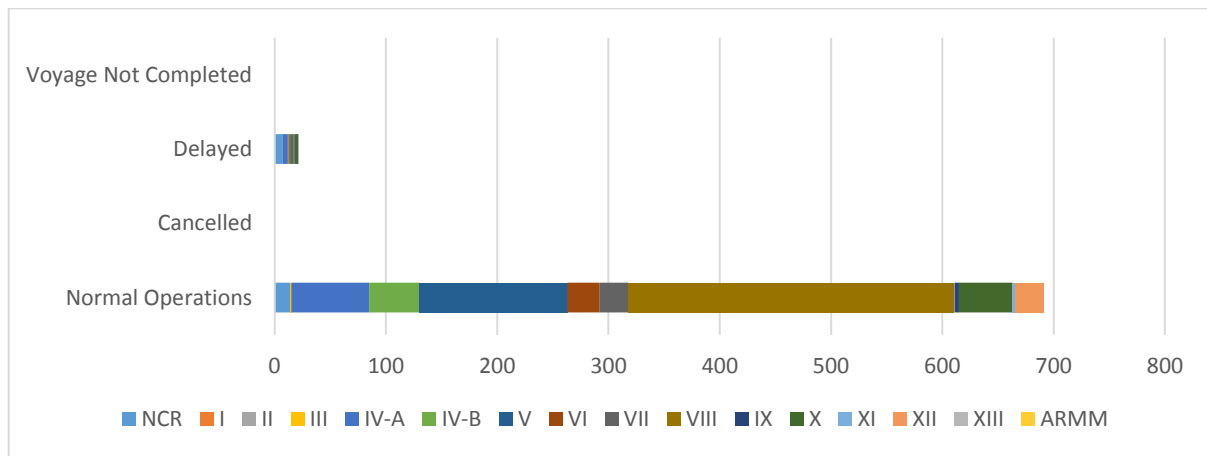
- 713** Shipping Operations Recorded
- 331** Passenger Ships Operated
- 382** Cargo Ships Operated
- 691** Ships Operated Normally
- 0** Operations Cancelled
- 22** Operations Delayed
- 0** Operation Uncompleted

**PASSENGER AND CARGO SHIPPING OPERATIONS IN THE PHILIPPINES
 IN AREAS UNDER ALERT LEVEL 1 & 2**



Total of 713 Passenger and Cargo Shipping Operations

I. STATUS OF SHIPPING OPERATIONS NATIONWIDE



On May 13 - 19, 2022, there were 713 passenger and cargo shipping operations conducted wherein 691 or 97% were completed in accordance with their Certificate of Public Convenience (CPC).

Out of the 691 operations completed under normal conditions, the reported movements were mostly in the Eastern Visayas Region at 42% and Bicol Region at 19%.

Twenty – two (22) passenger ships or 7% encountered delays.

No shipping operations were not completed at the time of reporting, as the respective ships were still underway.

II. STATUS OF SHIPPING OPERATIONS BY CLASSIFICATION

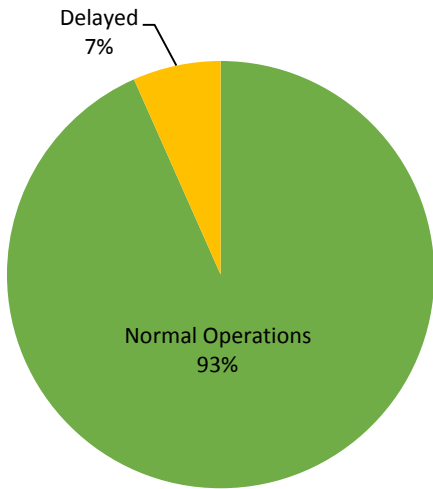
Region	Normal Operations		Cancelled		Delayed		Not Completed	
	Passenger	Cargo	Passenger	Cargo	Passenger	Cargo	Passenger	Cargo
NCR	7	7	-	-	7	-	-	-
I	-	-	-	-	-	-	-	-
II	-	-	-	-	-	-	-	-
III	-	1	-	-	-	-	-	-
IV-A	69	1	-	-	5	-	-	-
IV-B	45	-	-	-	1	-	-	-
V	39	94	-	-	-	-	-	-
VI	13	16	-	-	1	-	-	-
VII	8	18	-	-	3	-	-	-
VIII	125	168	-	-	-	-	-	-
IX	1	3	-	-	1	-	-	-
X	2	46	-	-	3	-	-	-
XI	-	2	-	-	-	-	-	-
XII	-	26	-	-	-	-	-	-
XIII	-	-	-	-	1	-	-	-
ARMM	-	-	-	-	-	-	-	-
Total	309	382	-	-	22	-	-	-

Amid the measures in place due to MGCQ, and GCQ, 382 out of 382 (100%) cargo ships still operated normally – are 12 bulk carrier, 26 container ships, 10 general cargo ships, 50 LCT ships, 1 oil tanker, 281 Roro cargo ships.

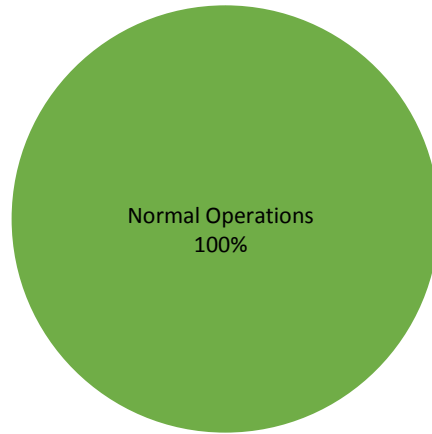
Three-hundred nine (309) passenger ships completed their voyage – 196 conventional passenger ships, 63 RoPax ships and 50 fast craft ferry completed their operations but mostly only carried cargoes during their voyage.

Meanwhile out of the 331 passenger ships, 7% were affected by the measures adopted in view of COVID-19. These measures caused either the cancellation, delay, or uncompleted operations of 22 passenger ships.

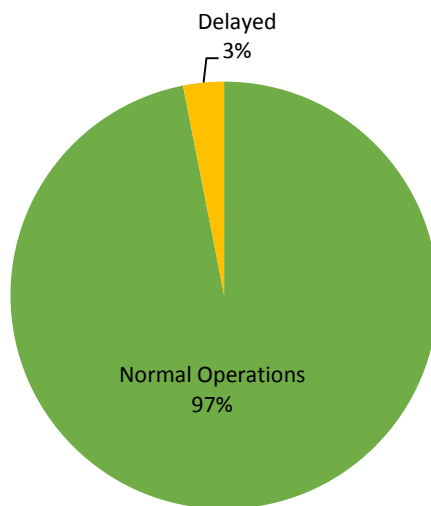
PASSENGER Ship Operations



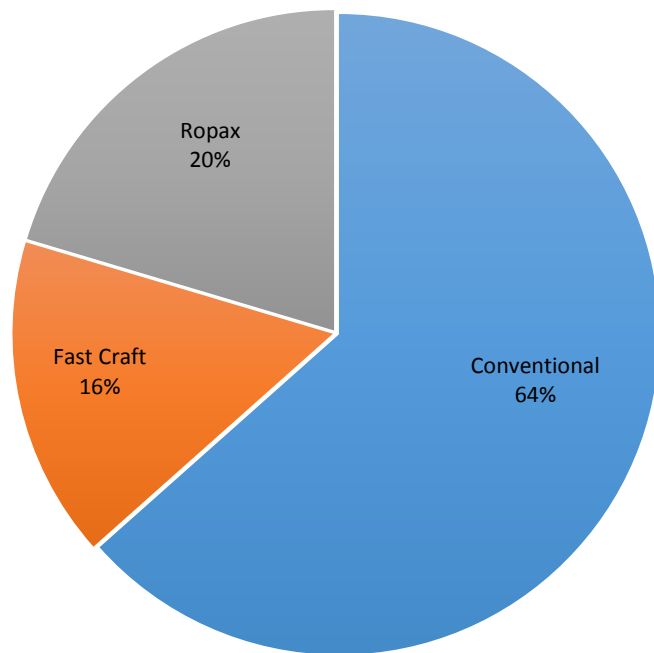
CARGO Ship Operations



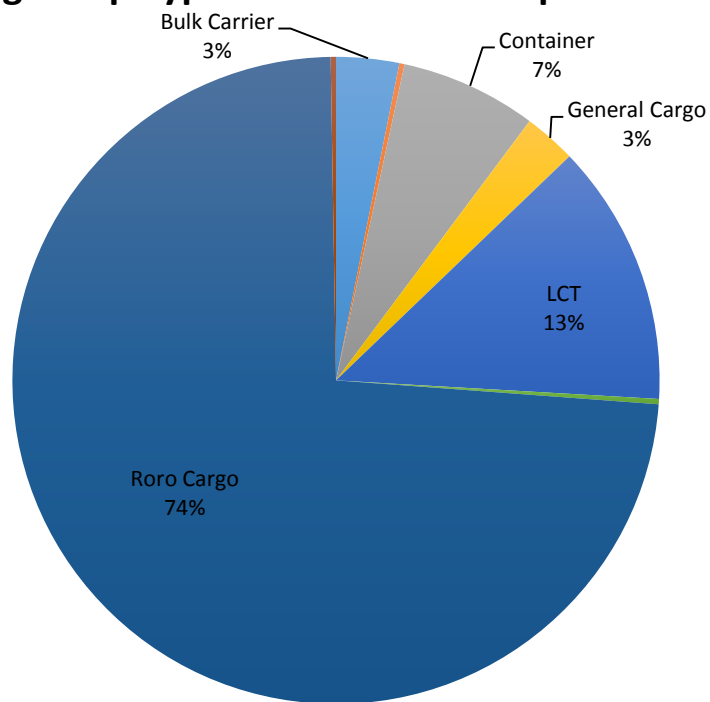
PASSENGER and CARGO Ship Operations



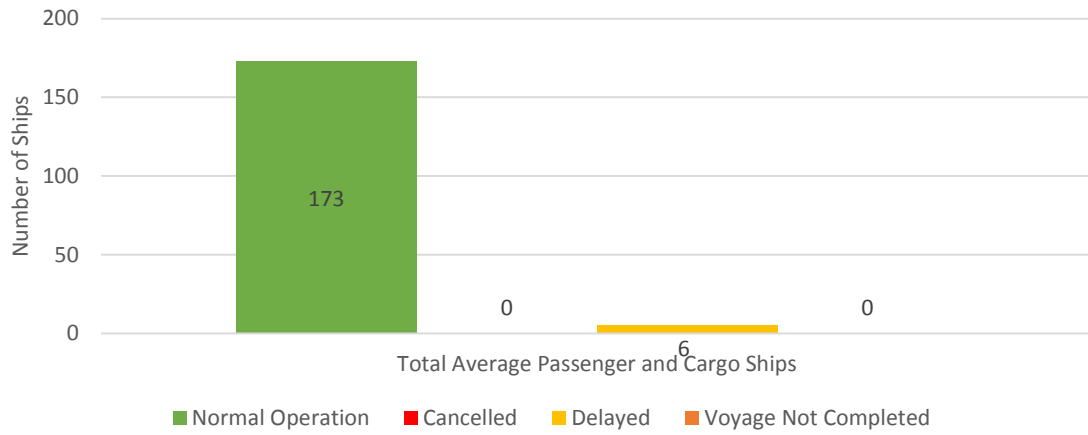
Passenger Ship Types under Normal Operations



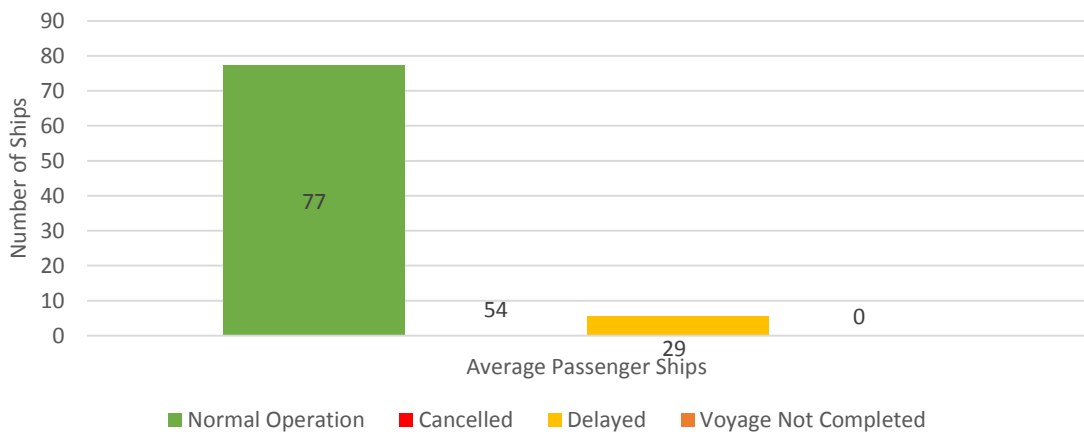
Cargo Ship Types under Normal Operations



Daily Average Passenger and Cargo Ship Operation



Daily Average Passenger Ship Operation



Daily Average Cargo Ship Operation

