



**MARITIME INDUSTRY AUTHORITY
WEEKLY SUMMARY SITUATION REPORT - Summary 124**

Passenger and Cargo Shipping Operations on Jul 29 - Aug 04. 2022
in areas under Alert Level 1 & 2

Data generated on Jul 29 - Aug 04. 2022, 3:00 PM

HIGHLIGHTS

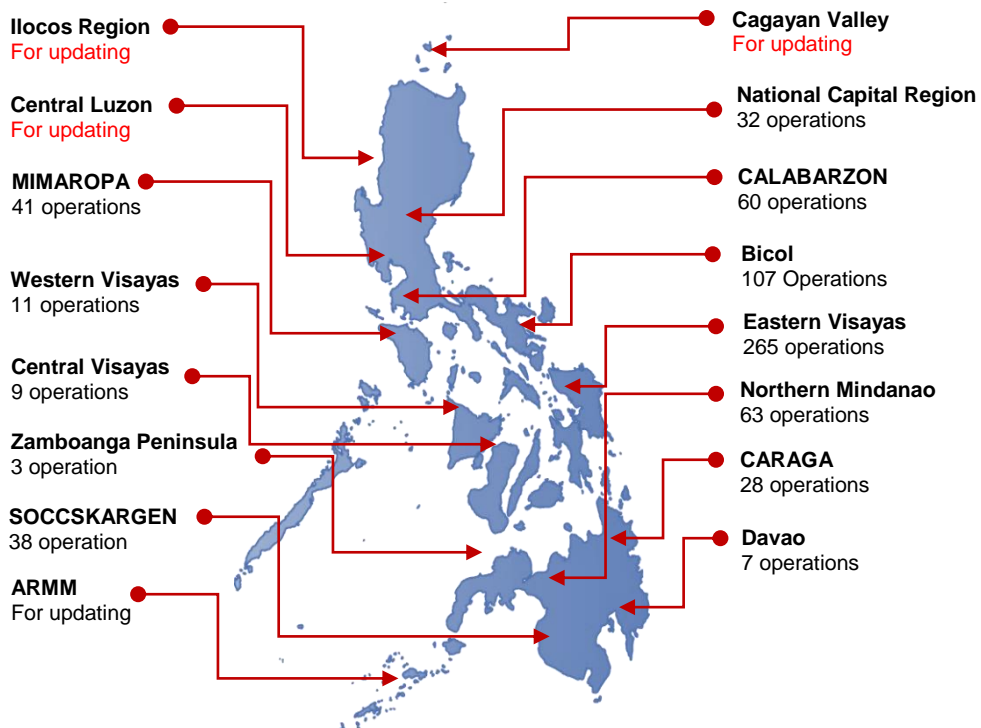
- Ninety-eight percent (98%) of passenger and cargo shipping operations were completed in accordance with the ships' CPC.
- Two percent (2%) of the shipping operations were affected.
- Operations of passenger ships were more affected compared to cargo ships. 100% of the cargo shipping operations were completed under normal conditions compared to passenger ships at 96%.
- Daily average passenger and cargo ship operations are 164 completed under normal conditions, 0 cancelled trips, 3 delayed and 0 not completed voyage.
- **With cargo shipping still operational, transport of goods is assured.**

PASSENGER AND CARGO SHIPPING IN NUMBERS

Jul 29 - Aug 04. 2022

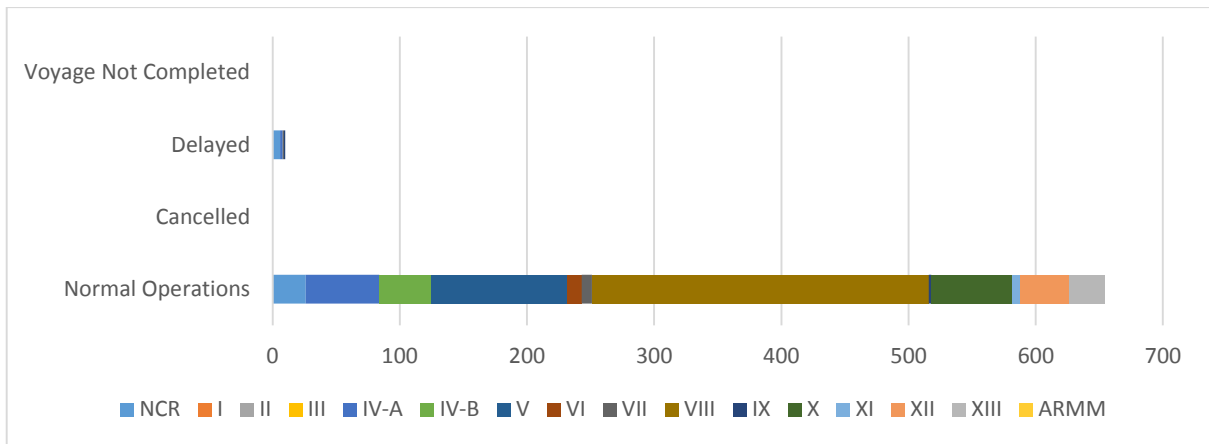
- 664** Shipping Operations Recorded
- 254** Passenger Ships Operated
- 410** Cargo Ships Operated
- 654** Ships Operated Normally
- 0** Operations Cancelled
- 10** Operations Delayed
- 0** Operation Uncompleted

**PASSENGER AND CARGO SHIPPING OPERATIONS IN THE PHILIPPINES
IN AREAS UNDER ALERT LEVEL 1 & 2**



Total of 664 Passenger and Cargo Shipping Operations

I. STATUS OF SHIPPING OPERATIONS NATIONWIDE



On Jul 29 - Aug 04, 2022, there were 664 passenger and cargo shipping operations conducted wherein 654 or 98% were completed in accordance with their Certificate of Public Convenience (CPC).

Out of the 654 operations completed under normal conditions, the reported movements were mostly in the Eastern Visayas Region at 41% and Bicol Region at 16%.

Ten (10) passenger ships or 4% encountered delays.

No shipping operations were not completed at the time of reporting, as the respective ships were still underway.

II. STATUS OF SHIPPING OPERATIONS BY CLASSIFICATION

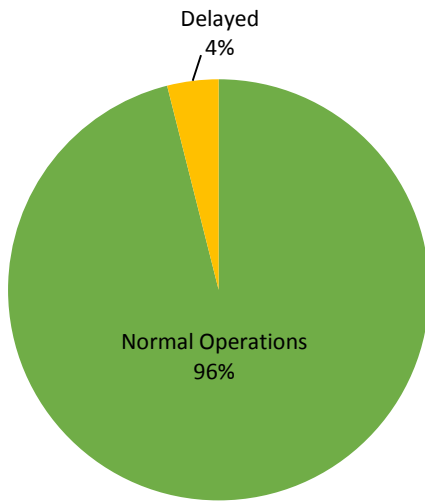
Region	Normal Operations		Cancelled		Delayed		Not Completed	
	Passenger	Cargo	Passenger	Cargo	Passenger	Cargo	Passenger	Cargo
NCR	8	18	-	-	6	-	-	-
I	-	-	-	-	-	-	-	-
II	-	-	-	-	-	-	-	-
III	-	-	-	-	-	-	-	-
IV-A	58	-	-	-	2	-	-	-
IV-B	41	-	-	-	-	-	-	-
V	29	78	-	-	-	-	-	-
VI	6	5	-	-	-	-	-	-
VII	3	5	-	-	1	-	-	-
VIII	99	166	-	-	-	-	-	-
IX	-	2	-	-	1	-	-	-
X	-	63	-	-	-	-	-	-
XI	-	7	-	-	-	-	-	-
XII	-	38	-	-	-	-	-	-
XIII	-	28	-	-	-	-	-	-
ARMM	-	-	-	-	-	-	-	-
Total	244	410	-	-	10	-	-	-

Amid the measures in place due to MGCQ, and GCQ, 410 out of 410 (100%) cargo ships still operated normally – are 40 container ships, 44 LCT ships, 318 Roro cargo ships.

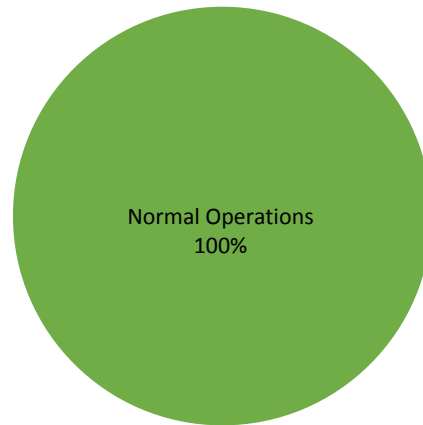
Two hundred forty four (244) passenger ships completed their voyage – 153 conventional passenger ships, 56 RoPax ships and 35 fast craft ferry completed their operations but mostly only carried cargoes during their voyage.

Meanwhile out of the 254 passenger ships, 4% were affected by the measures adopted in view of COVID-19. These measures caused either the cancellation, delay, or uncompleted operations of 10 passenger ships.

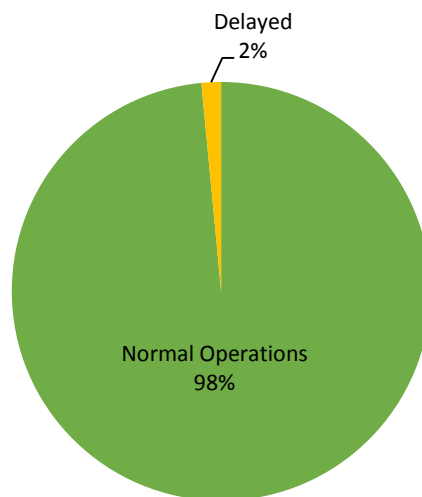
PASSENGER Ship Operations



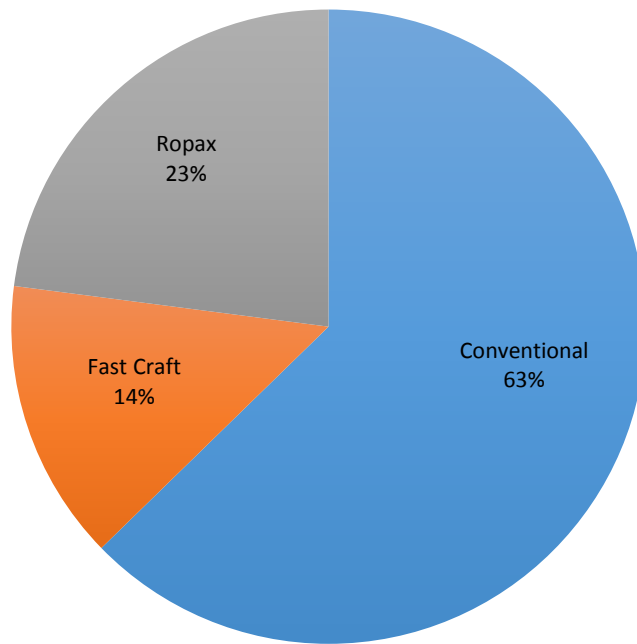
CARGO Ship Operations



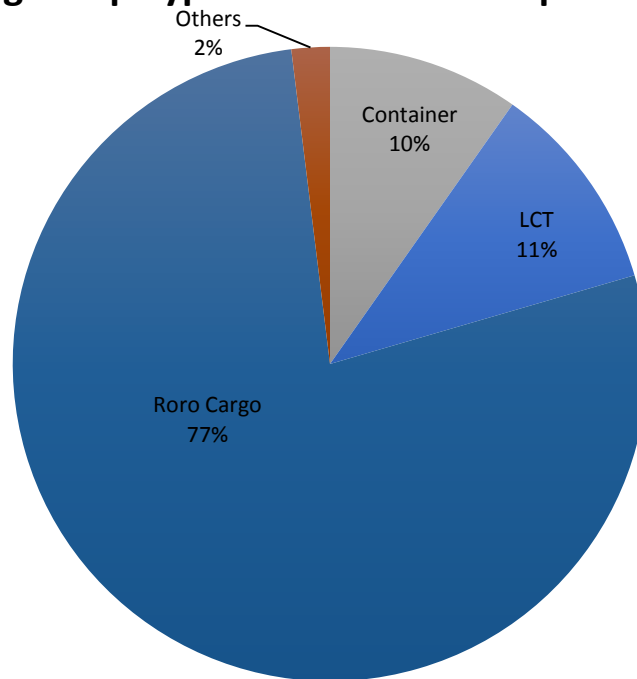
PASSENGER and CARGO Ship Operations



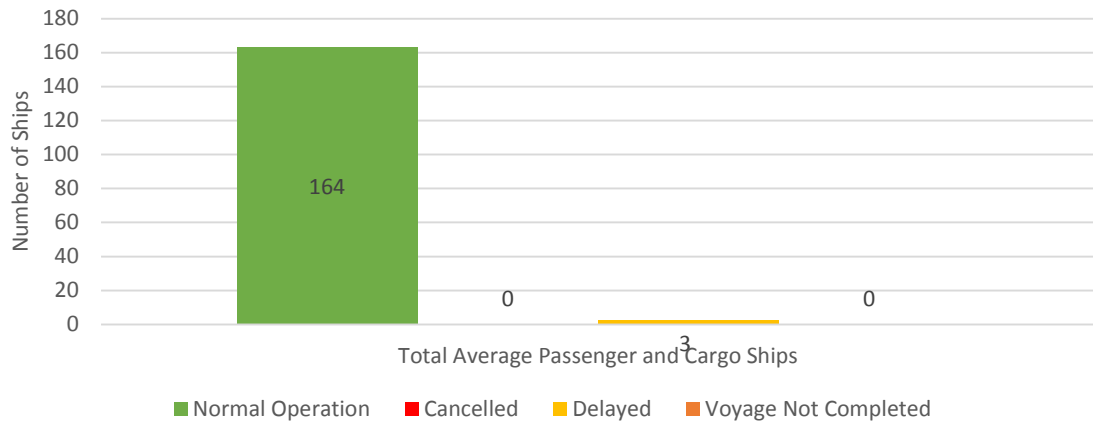
Passenger Ship Types under Normal Operations



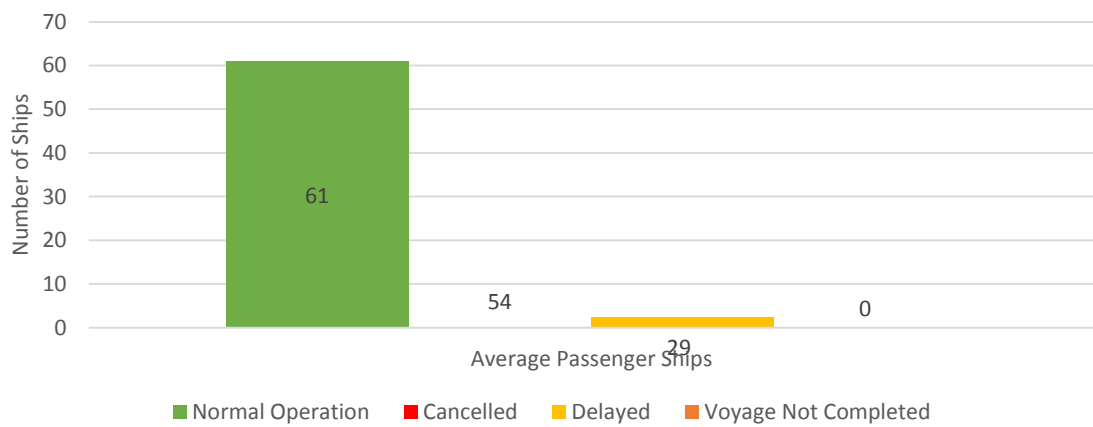
Cargo Ship Types under Normal Operations



Daily Average Passenger and Cargo Ship Operation



Daily Average Passenger Ship Operation



Daily Average Cargo Ship Operation

