



**MARITIME INDUSTRY AUTHORITY**  
**WEEKLY SUMMARY SITUATION REPORT - Summary 132**  
 Passenger and Cargo Shipping Operations on Sep. 23 - 29, 2022  
 in areas under Alert Level 1 & 2  
*Data generated on Sep. 23 - 29, 2022, 3:00 PM*

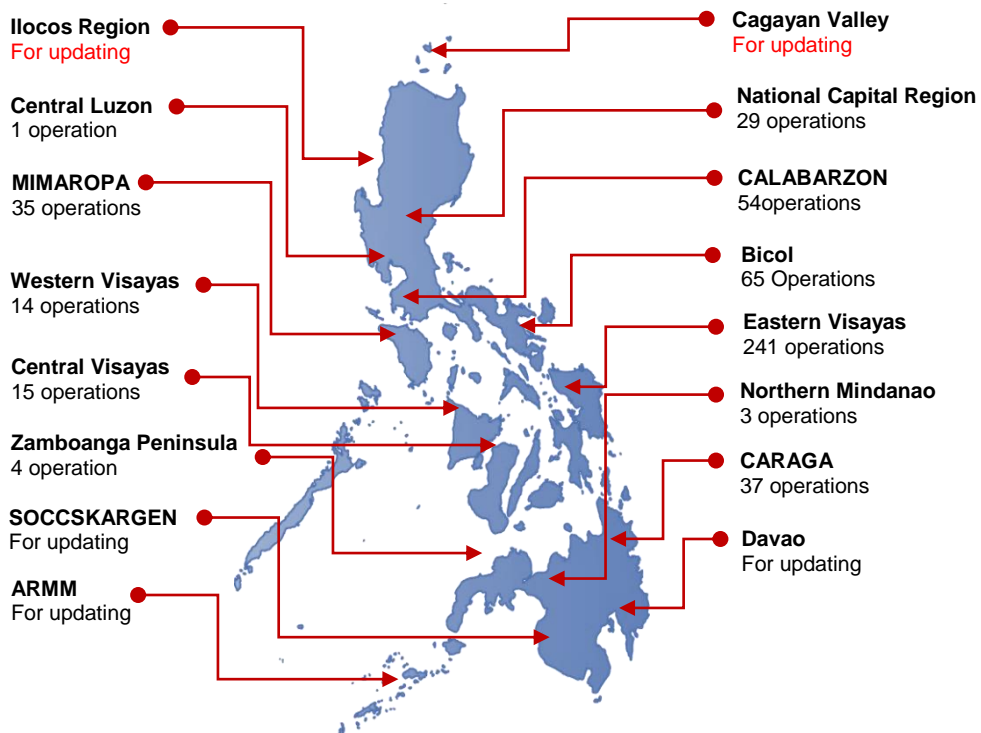
**HIGHLIGHTS**

- Ninety-seven percent (97%) of passenger and cargo shipping operations were completed in accordance with the ships' CPC.
- Three percent ( 3%) of the shipping operations were affected.
- Operations of passenger ships were more affected compared to cargo ships. 100% of the cargo shipping operations were completed under normal conditions compared to passenger ships at 94%.
- Daily average passenger and cargo ship operations are 121 completed under normal conditions, 0 cancelled trips, 4 delayed and 0 not completed voyage.
- **With cargo shipping still operational, transport of goods is assured.**

**PASSENGER AND CARGO SHIPPING IN NUMBERS**  
 Sep. 23 - 29, 2022

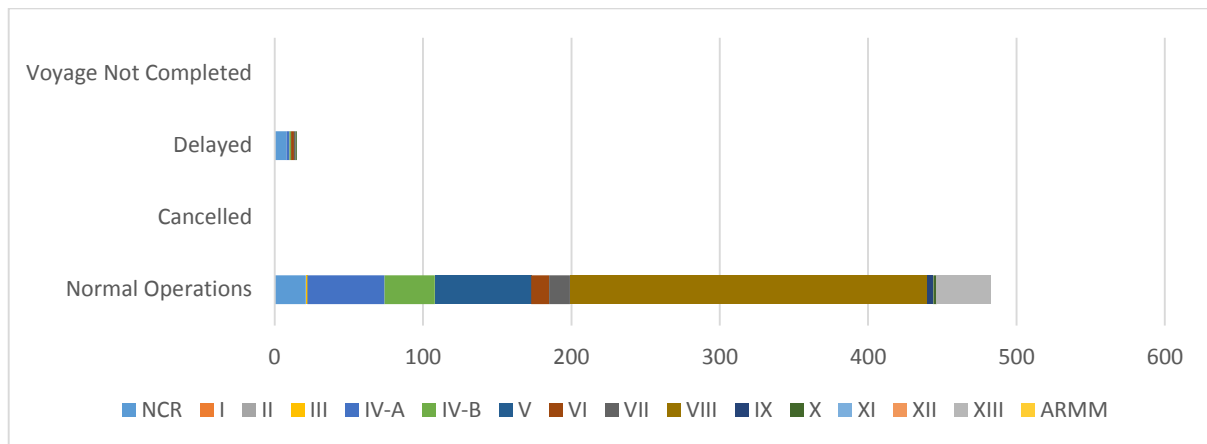
- 498** Shipping Operations Recorded
- 237** Passenger Ships Operated
- 261** Cargo Ships Operated
- 483** Ships Operated Normally
- 0** Operations Cancelled
- 15** Operations Delayed
- 0** Operation Uncompleted

**PASSENGER AND CARGO SHIPPING OPERATIONS IN THE PHILIPPINES**  
**IN AREAS UNDER ALERT LEVEL 1 & 2**



**Total of 498 Passenger and Cargo Shipping Operations**

## I. STATUS OF SHIPPING OPERATIONS NATIONWIDE



On Sep. 23 - 29, 2022, there were 498 passenger and cargo shipping operations conducted wherein 483 or 97% were completed in accordance with their Certificate of Public Convenience (CPC).

Out of the 483 operations completed under normal conditions, the reported movements were mostly in the Eastern Visayas Region at 50% and Bicol Region at 13%.

Fourteen (14) passenger ships or 6% encountered delays.

No shipping operations were not completed at the time of reporting, as the respective ships were still underway.

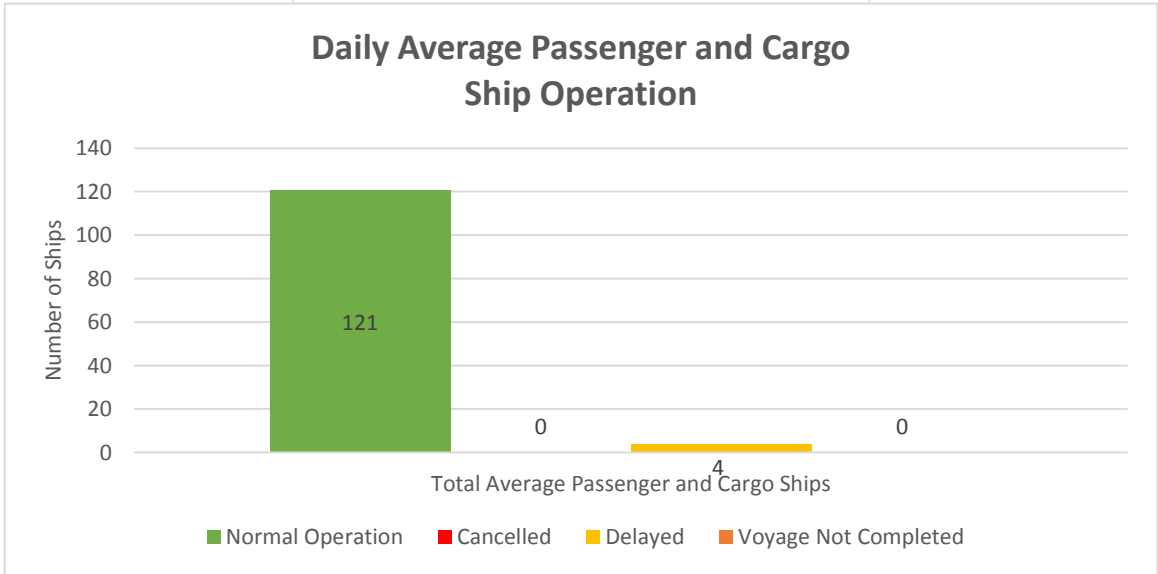
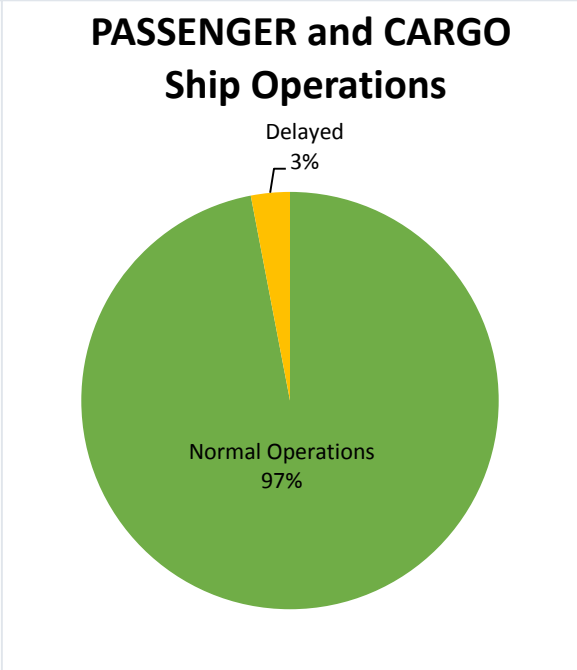
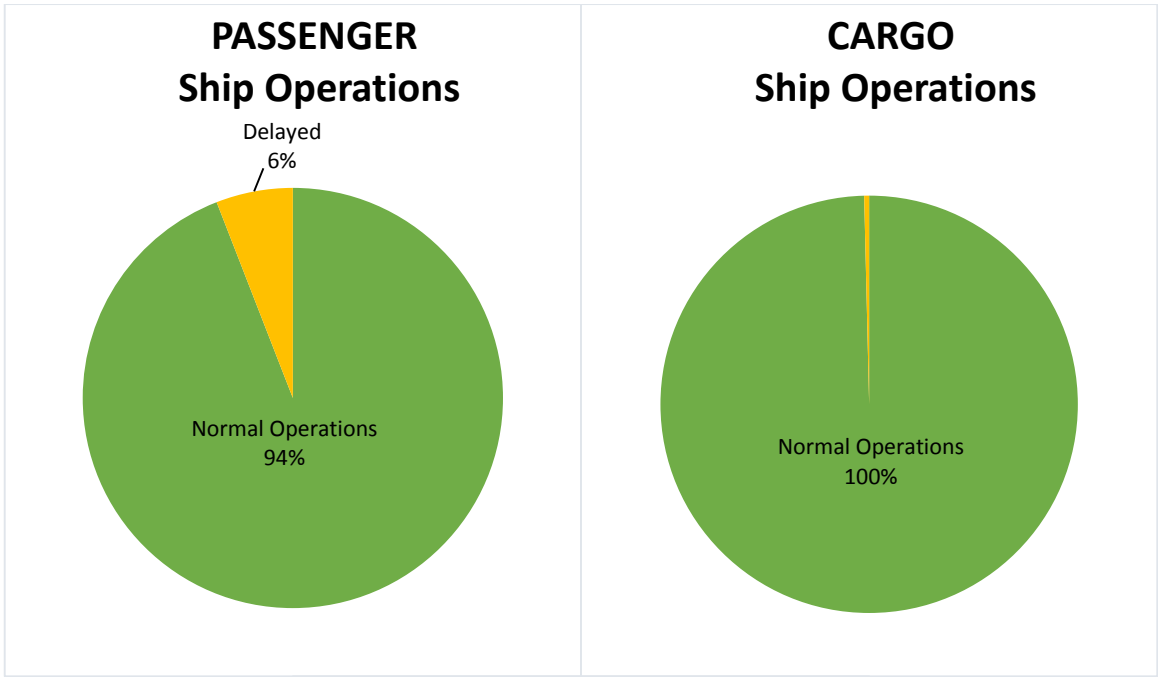
## II. STATUS OF SHIPPING OPERATIONS BY CLASSIFICATION

Region	Normal Operations		Cancelled		Delayed		Not Completed	
	Passenger	Cargo	Passenger	Cargo	Passenger	Cargo	Passenger	Cargo
<b>NCR</b>	<b>3</b>	<b>18</b>	-	-	<b>7</b>	<b>1</b>	-	-
<b>I</b>	-	-	-	-	-	-	-	-
<b>II</b>	-	-	-	-	-	-	-	-
<b>III</b>	-	<b>1</b>	-	-	-	-	-	-
<b>IV-A</b>	<b>52</b>	-	-	-	<b>2</b>	-	-	-
<b>IV-B</b>	<b>34</b>	-	-	-	<b>1</b>	-	-	-
<b>V</b>	<b>22</b>	<b>43</b>	-	-	-	-	-	-
<b>VI</b>	<b>6</b>	<b>6</b>	-	-	<b>2</b>	-	-	-
<b>VII</b>	<b>1</b>	<b>13</b>	-	-	<b>1</b>	-	-	-
<b>VIII</b>	<b>105</b>	<b>136</b>	-	-	-	-	-	-
<b>IX</b>	-	<b>4</b>	-	-	-	-	-	-
<b>X</b>	-	<b>2</b>	-	-	<b>1</b>	-	-	-
<b>XI</b>	-	-	-	-	-	-	-	-
<b>XII</b>	-	-	-	-	-	-	-	-
<b>XIII</b>	-	<b>37</b>	-	-	-	-	-	-
<b>ARMM</b>	-	-	-	-	-	-	-	-
<b>Total</b>	<b>223</b>	<b>260</b>	-	-	<b>14</b>	<b>1</b>	-	-

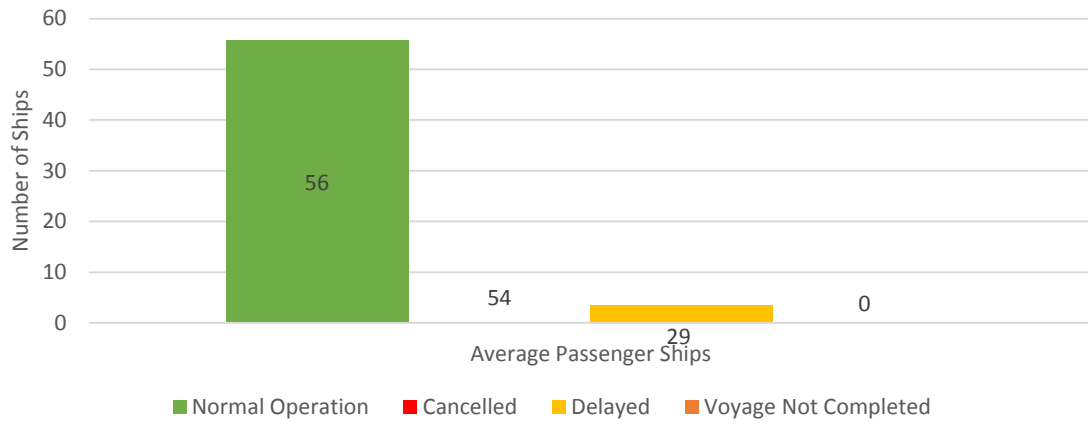
Amid the measures in place due to MGCQ, and GCQ, 260 out of 261 (100%) cargo ships still operated normally – are 43 container ships, , 36 LCT ships, 164 Roro cargo ships.

Two hundred and twenty – three (223) passenger ships completed their voyage – 142 conventional passenger ships, 47 RoPax ships and 34 fast craft ferry completed their operations but mostly only carried cargoes during their voyage.

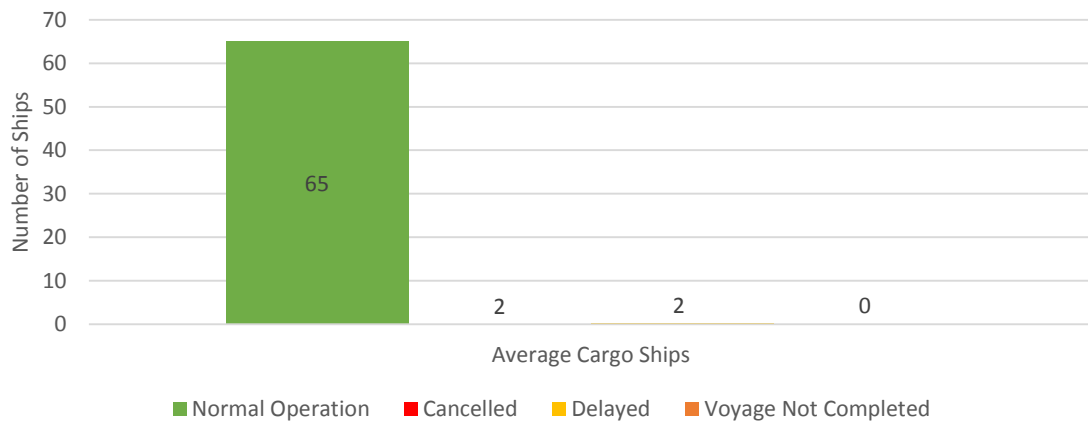
Meanwhile out of the 237 passenger ships, 6% were affected by the measures adopted in view of COVID-19. These measures caused either the cancellation, delay, or uncompleted operations of 14 passenger ships.



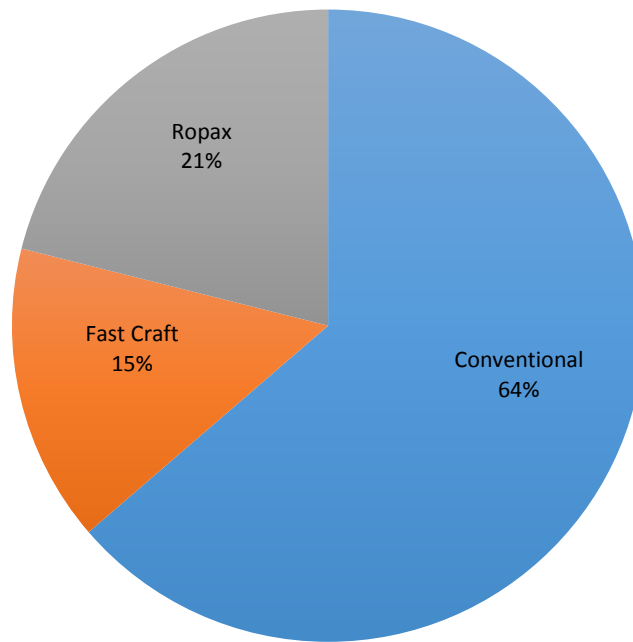
### Daily Average Passenger Ship Operation



### Daily Average Cargo Ship Operation



### Passenger Ship Types under Normal Operations



### Cargo Ship Types under Normal Operations

