



MARITIME INDUSTRY AUTHORITY
WEEKLY SUMMARY SITUATION REPORT - Summary 144
 Passenger and Cargo Shipping Operations on Dec. 16 - 22, 2022
 in areas under Alert Level 1 & 2
Data generated on Dec. 16 - 22, 2022, 3:00 PM

HIGHLIGHTS

- Ninety-seven percent (97%) of passenger and cargo shipping operations were completed in accordance with the ships' CPC.
- Three percent (3%) of the shipping operations were affected.
- Operations of passenger ships were more affected compared to cargo ships. 100% of the cargo shipping operations were completed under normal conditions compared to passenger ships at 93%.
- Daily average passenger and cargo ship operations are 156 completed under normal conditions, 0 cancelled trips, 5 delayed and 0 not completed voyage.
- **With cargo shipping still operational, transport of goods is assured.**

PASSENGER AND CARGO SHIPPING IN NUMBERS
Dec. 16 - 22, 2022

642 Shipping Operations Recorded

274 Passenger Ships Operated

368 Cargo Ships Operated

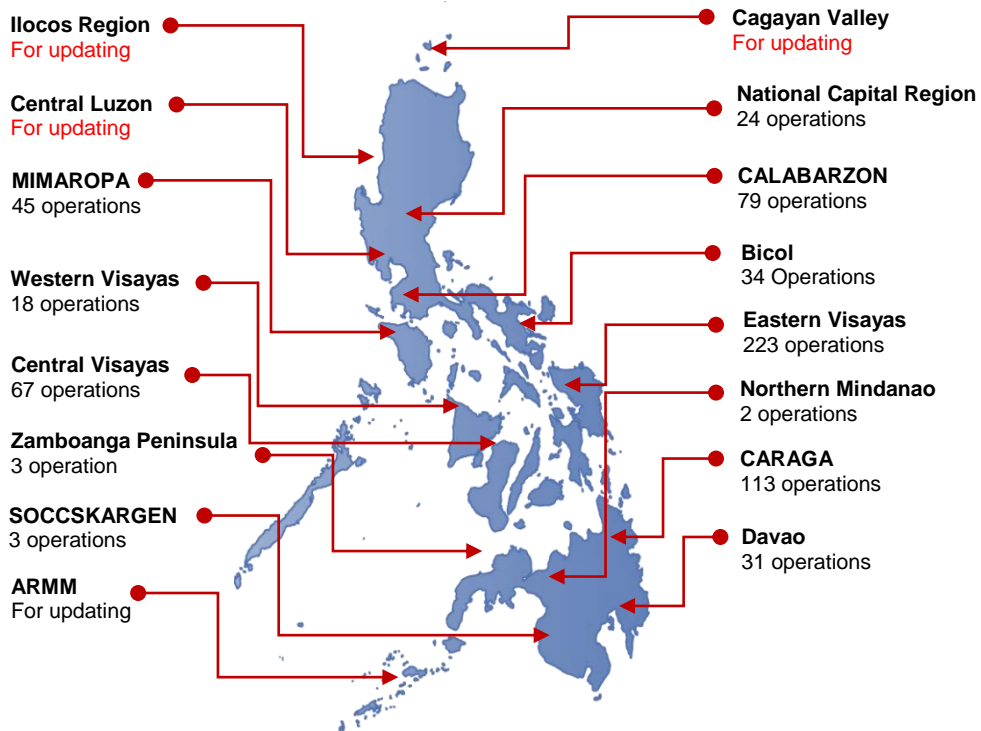
622 Ships Operated Normally

0 Operations Cancelled

20 Operations Delayed

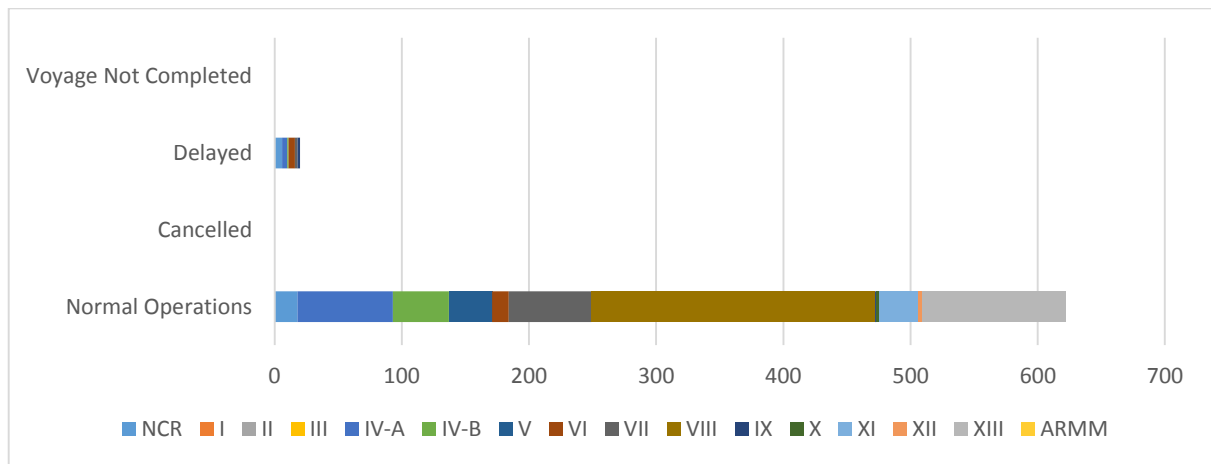
0 Operation Uncompleted

**PASSENGER AND CARGO SHIPPING OPERATIONS IN THE PHILIPPINES
IN AREAS UNDER ALERT LEVEL 1 & 2**



Total of 642 Passenger and Cargo Shipping Operations

I. STATUS OF SHIPPING OPERATIONS NATIONWIDE



On Dec. 16 - 22, 2022, there were 642 passenger and cargo shipping operations conducted wherein 622 or 97% were completed in accordance with their Certificate of Public Convenience (CPC).

Out of the 622 operations completed under normal conditions, the reported movements were mostly in the Eastern Visayas Region at 36% and CARAGA Region at 18%.

Twenty (20) passenger ships or 7% encountered delays.

No shipping operations were not completed at the time of reporting, as the respective ships were still underway.

II. STATUS OF SHIPPING OPERATIONS BY CLASSIFICATION

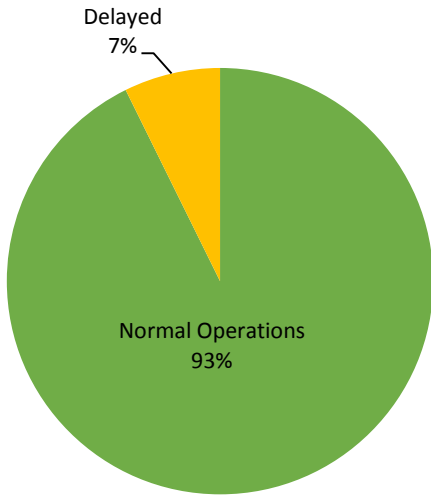
Region	Normal Operations		Cancelled		Delayed		Not Completed	
	Passenger	Cargo	Passenger	Cargo	Passenger	Cargo	Passenger	Cargo
NCR	5	13	-	-	6	-	-	-
I	-	-	-	-	-	-	-	-
II	-	-	-	-	-	-	-	-
III	-	-	-	-	-	-	-	-
IV-A	74	1	-	-	4	-	-	-
IV-B	44	-	-	-	1	-	-	-
V	10	24	-	-	-	-	-	-
VI	7	6	-	-	5	-	-	-
VII	17	48	-	-	2	-	-	-
VIII	97	126	-	-	-	-	-	-
IX	-	1	-	-	2	-	-	-
X	-	2	-	-	-	-	-	-
XI	-	31	-	-	-	-	-	-
XII	-	3	-	-	-	-	-	-
XIII	-	113	-	-	-	-	-	-
ARMM	-	-	-	-	-	-	-	-
Total	254	368	-	-	20	-	-	-

Amid the measures in place due to MGCQ, and GCQ, 368 out of 368 (100%) cargo ships still operated normally – are 34 container ships, 44 LCT ships, 270 Roro cargo ships.

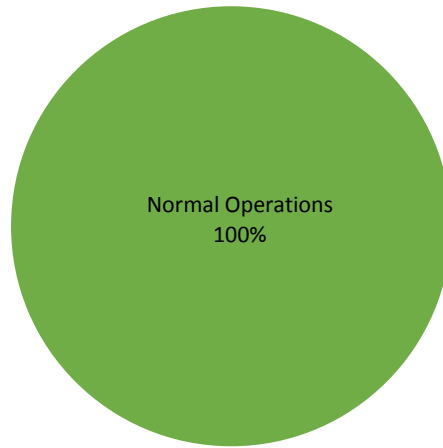
Two – hundred fifty four (254) passenger ships completed their voyage – 168 conventional passenger ships, 53 RoPax ships and 33 fast craft ferry completed their operations but mostly only carried cargoes during their voyage.

Meanwhile out of the 274 passenger ships, 7% were affected by the measures adopted in view of COVID-19. These measures caused either the cancellation, delay, or uncompleted operations of 20 passenger ships.

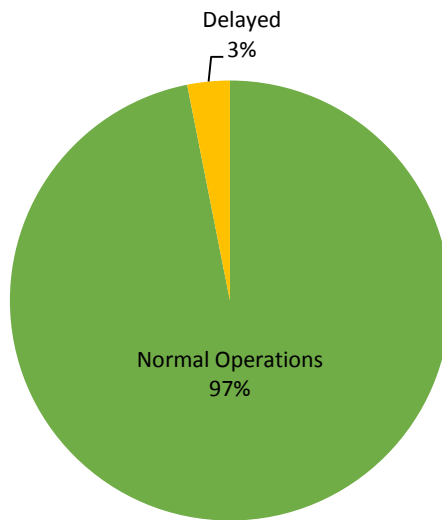
PASSENGER Ship Operations



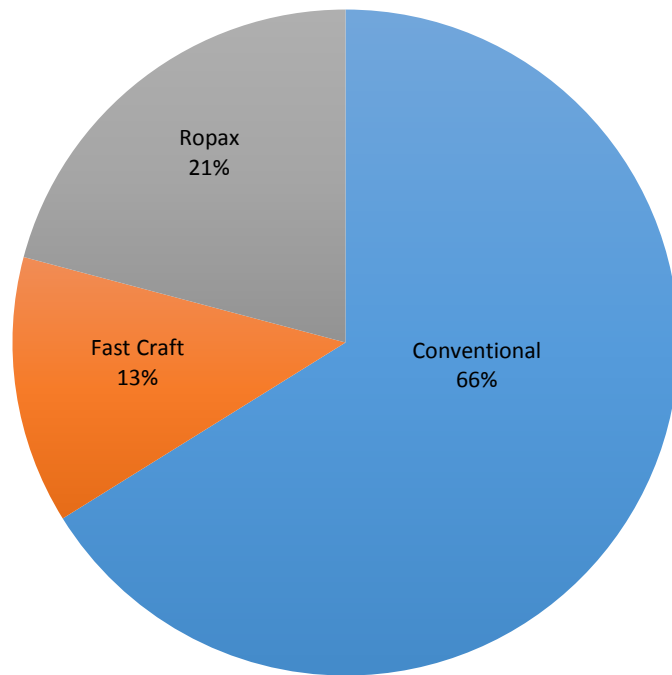
CARGO Ship Operations



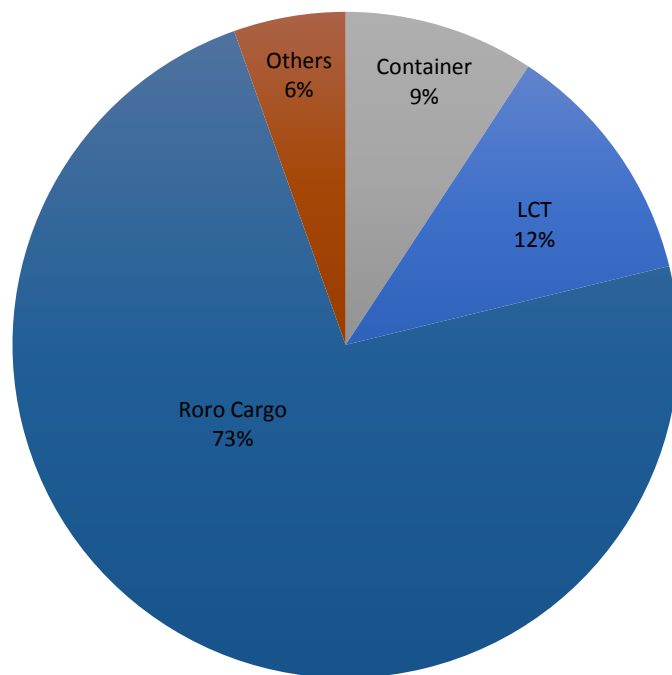
PASSENGER and CARGO Ship Operations



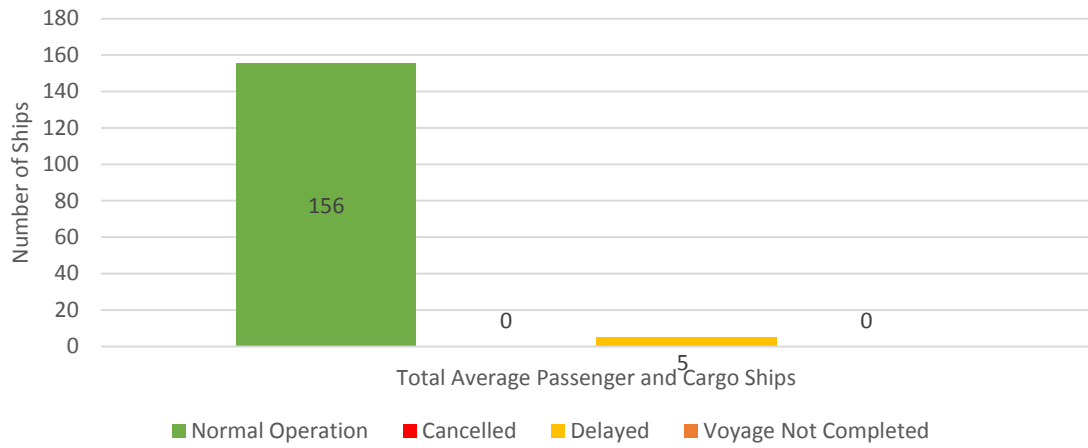
Passenger Ship Types under Normal Operations



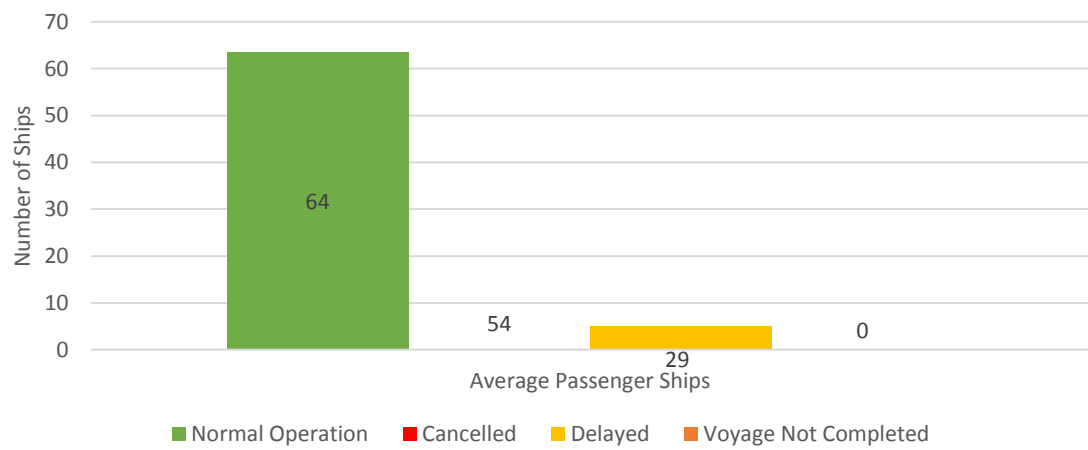
Cargo Ship Types under Normal Operations



Daily Average Passenger and Cargo Ship Operation



Daily Average Passenger Ship Operation



Daily Average Cargo Ship Operation

