



MARITIME INDUSTRY AUTHORITY
WEEKLY SUMMARY SITUATION REPORT - Summary 157
 Passenger and Cargo Shipping Operations on Mar. 17 - 23, 2023
 in areas under Alert Level 1 & 2
Data generated on Mar. 17 - 23, 2023, 3:00 PM

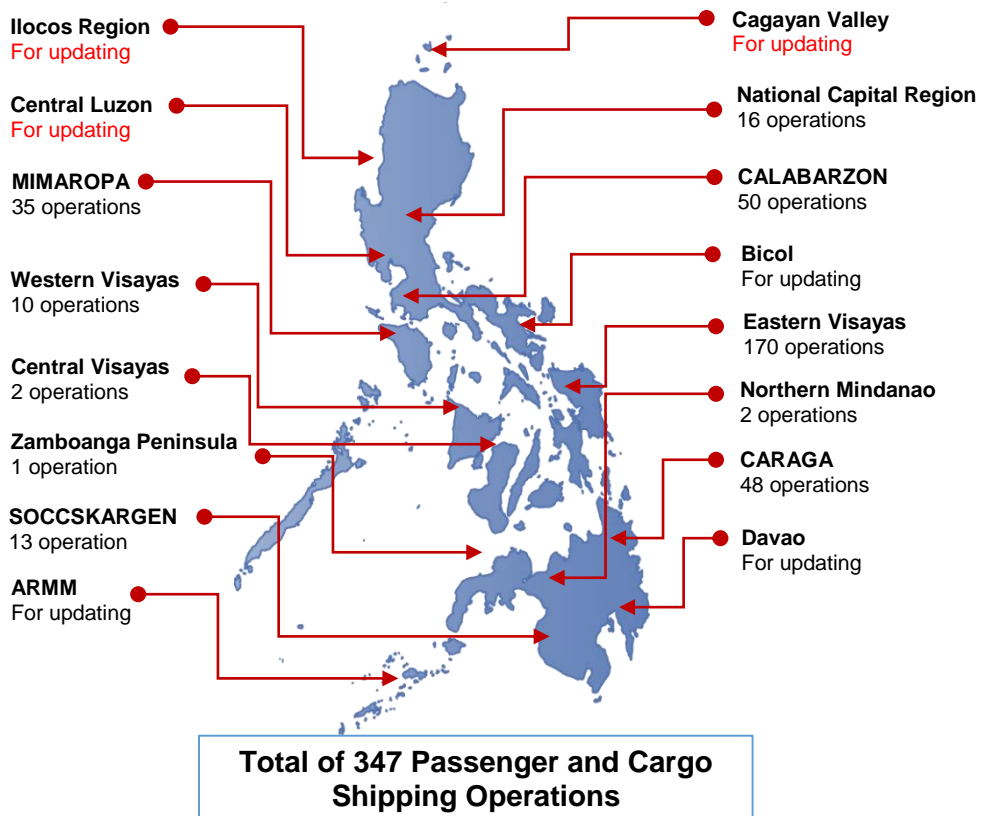
HIGHLIGHTS

- Ninety-six percent (96%) of passenger and cargo shipping operations were completed in accordance with the ships' CPC.
- Four percent (4%) of the shipping operations were affected.
- Operations of passenger ships were more affected compared to cargo ships. 100% of the cargo shipping operations were completed under normal conditions compared to passenger ships at 93%.
- Daily average passenger and cargo ship operations are 84 completed under normal conditions, 0 cancelled trips, 3 delayed and 0 not completed voyage.
- **With cargo shipping still operational, transport of goods is assured.**

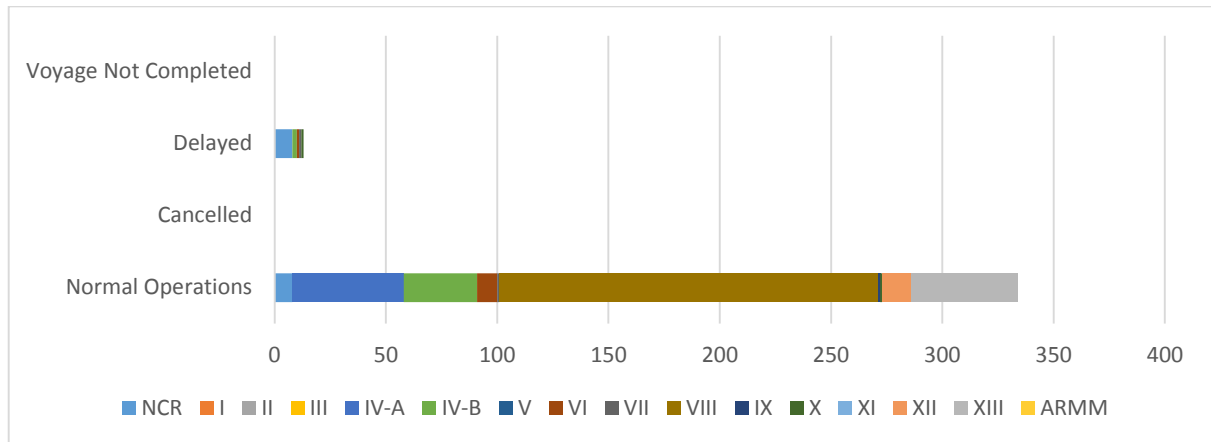
PASSENGER AND CARGO SHIPPING IN NUMBERS
 Mar. 17 - 23, 2023

- 347** Shipping Operations Recorded
- 183** Passenger Ships Operated
- 164** Cargo Ships Operated
- 334** Ships Operated Normally
- 0** Operations Cancelled
- 13** Operations Delayed
- 0** Operation Uncompleted

PASSENGER AND CARGO SHIPPING OPERATIONS IN THE PHILIPPINES
IN AREAS UNDER ALERT LEVEL 1 & 2



I. STATUS OF SHIPPING OPERATIONS NATIONWIDE



On Mar. 17 - 23, 2023, there were 347 passenger and cargo shipping operations conducted wherein 334 or 96% were completed in accordance with their Certificate of Public Convenience (CPC).

Out of the 334 operations completed under normal conditions, the reported movements were mostly in the Eastern Visayas Region at 51% and CALABARZON Region at 15%.

Thirteen (13) passenger ships or 7% encountered delays.

No shipping operations were not completed at the time of reporting, as the respective ships were still underway.

II. STATUS OF SHIPPING OPERATIONS BY CLASSIFICATION

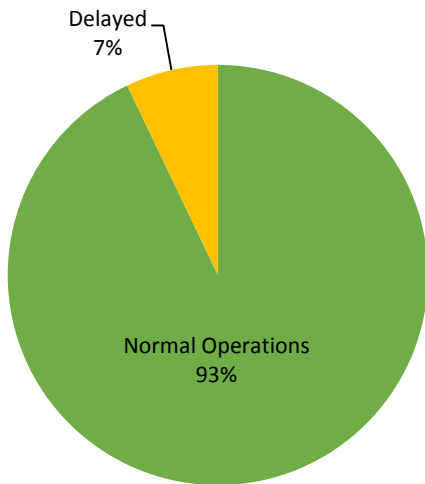
Region	Normal Operations		Cancelled		Delayed		Not Completed	
	Passenger	Cargo	Passenger	Cargo	Passenger	Cargo	Passenger	Cargo
NCR	6	2	-	-	8	-	-	-
I	-	-	-	-	-	-	-	-
II	-	-	-	-	-	-	-	-
III	-	-	-	-	-	-	-	-
IV-A	48	2	-	-	-	-	-	-
IV-B	31	2	-	-	2	-	-	-
V	-	-	-	-	-	-	-	-
VI	7	2	-	-	1	-	-	-
VII	-	1	-	-	1	-	-	-
VIII	78	92	-	-	-	-	-	-
IX	-	1	-	-	-	-	-	-
X	-	1	-	-	1	-	-	-
XI	-	-	-	-	-	-	-	-
XII	-	13	-	-	-	-	-	-
XIII	-	48	-	-	-	-	-	-
ARMM	-	-	-	-	-	-	-	-
Total	170	164	-	-	13	-	-	-

Amid the measures in place due to MGCQ, and GCQ, 164 out of 164 (100%) cargo ships still operated normally – are 12 container ships, 35 LCT ships, 117 Roro cargo ships.

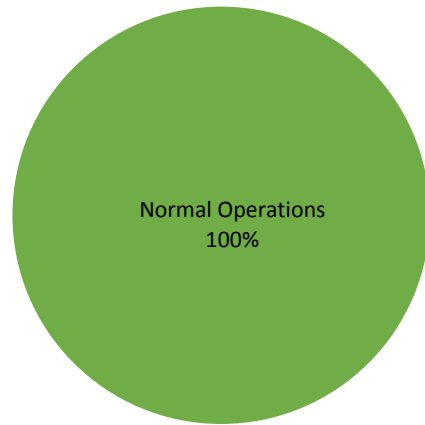
One hundred and seventy (170) passenger ships completed their voyage – 105 conventional passenger ships, 45 RoPax ships and 20 fast craft ferry completed their operations but mostly only carried cargoes during their voyage.

Meanwhile out of the 183 passenger ships, 7% were affected by the measures adopted in view of COVID-19. These measures caused either the cancellation, delay, or uncompleted operations of 13 passenger ships.

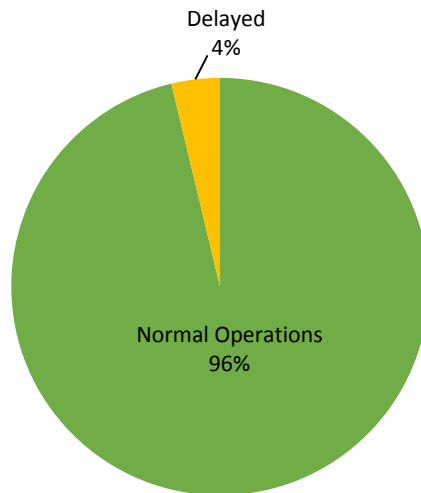
PASSENGER Ship Operations



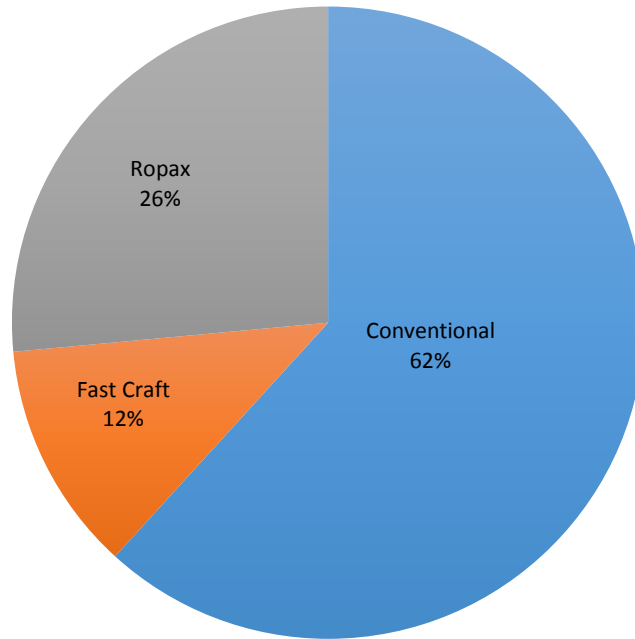
CARGO Ship Operations



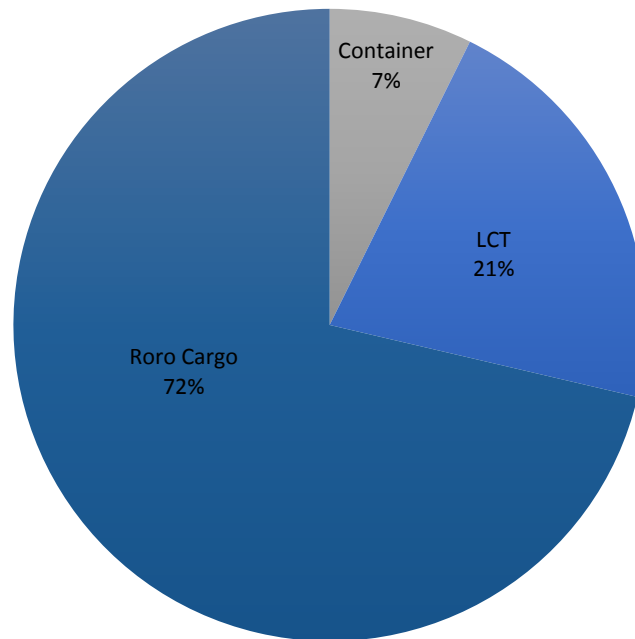
PASSENGER and CARGO Ship Operations



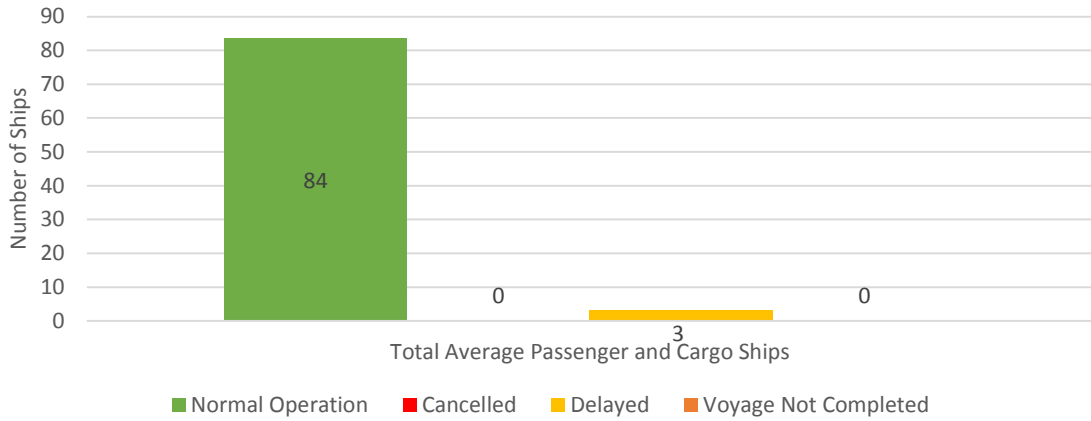
Passenger Ship Types under Normal Operations



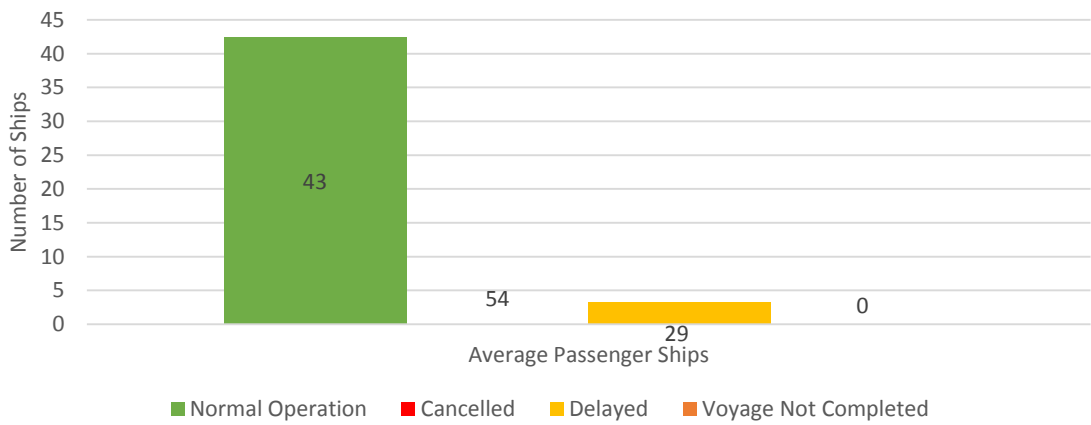
Cargo Ship Types under Normal Operations



Daily Average Passenger and Cargo Ship Operation



Daily Average Passenger Ship Operation



Daily Average Cargo Ship Operation

