



**MARITIME INDUSTRY AUTHORITY
WEEKLY SUMMARY SITUATION REPORT - Summary 172**

Passenger and Cargo Shipping Operations on Jun 30 - Jul 06, 2023
in areas under Alert Level 1 & 2

Data generated on Jun 30 - Jul 06, 2023, 3:00 PM

HIGHLIGHTS

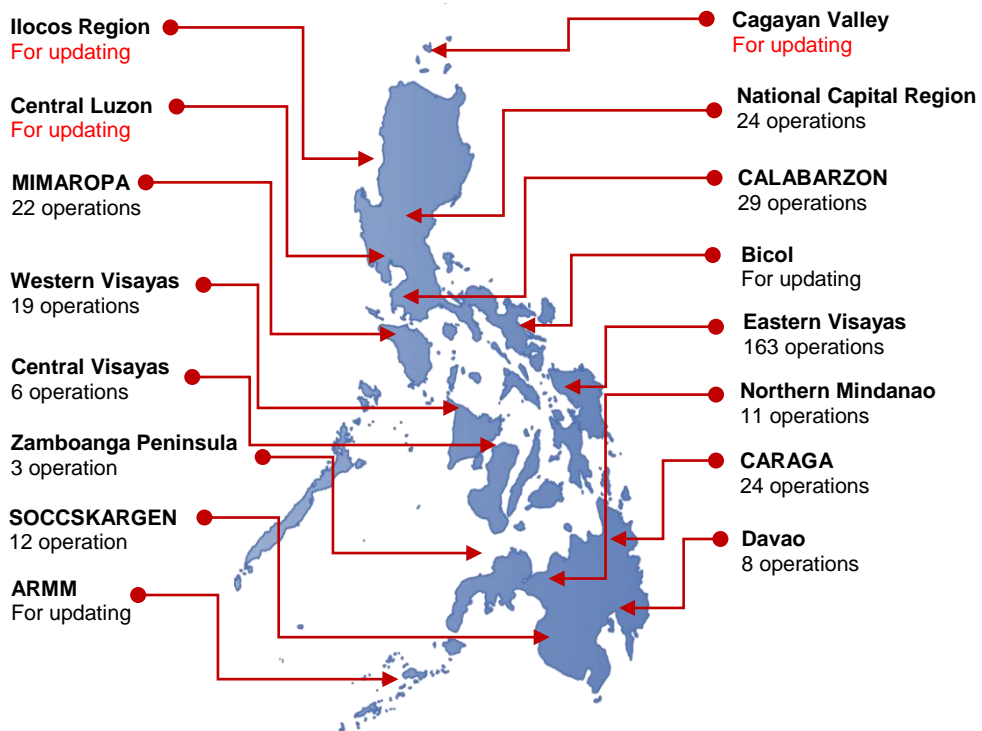
- Ninety-seven percent (97%) of passenger and cargo shipping operations were completed in accordance with the ships' CPC.
- Threepercent (3%) of the shipping operations were affected.
- Operations of passenger ships were more affected compared to cargo ships. 100% of the cargo shipping operations were completed under normal conditions compared to passenger ships at 95%.
- Daily average passenger and cargo ship operations are 78 completed under normal conditions, 0 cancelled trips, 2 delayed and 0 not completed voyage.
- **With cargo shipping still operational, transport of goods is assured.**

PASSENGER AND CARGO SHIPPING IN NUMBERS

Jun 30 - Jul 06, 2023

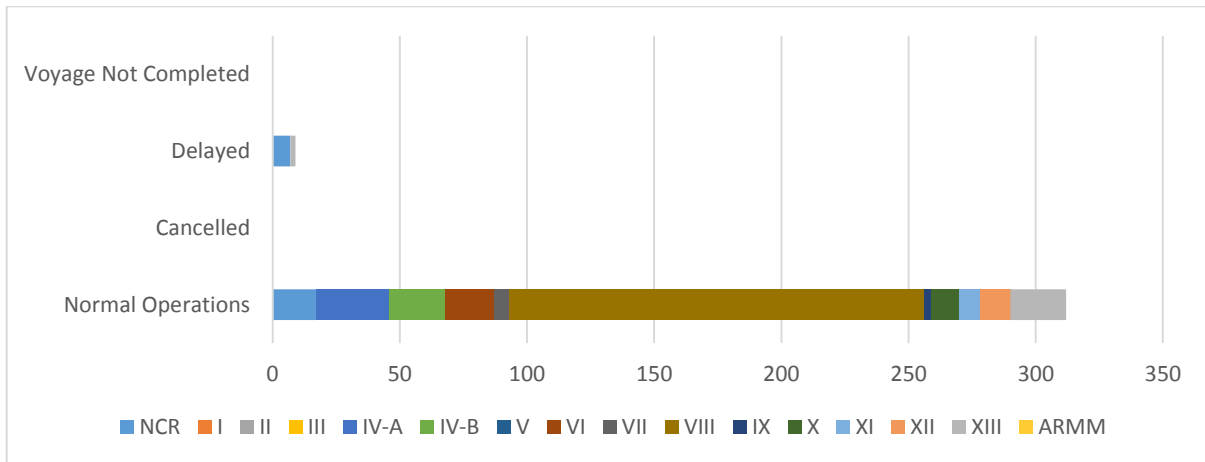
- 321** Shipping Operations Recorded
- 164** Passenger Ships Operated
- 157** Cargo Ships Operated
- 312** Ships Operated Normally
- 0** Operations Cancelled
- 9** Operations Delayed
- 0** Operation Uncompleted

**PASSENGER AND CARGO SHIPPING OPERATIONS IN THE PHILIPPINES
IN AREAS UNDER ALERT LEVEL 1 & 2**



Total of 321 Passenger and Cargo Shipping Operations

I. STATUS OF SHIPPING OPERATIONS NATIONWIDE



On Jun 30 - Jul 06, 2023, there were 321 passenger and cargo shipping operations conducted wherein 312 or 97% were completed in accordance with their Certificate of Public Convenience (CPC).

Out of the 312 operations completed under normal conditions, the reported movements were mostly in the Eastern Visayas Region at 52% and CALABARZON Region at 9%.

Nine (9) passenger ships or 5% encountered delays.

No shipping operations were not completed at the time of reporting, as the respective ships were still underway.

II. STATUS OF SHIPPING OPERATIONS BY CLASSIFICATION

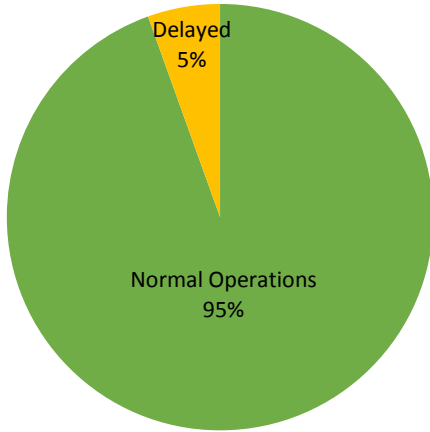
Region	Normal Operations		Cancelled		Delayed		Not Completed	
	Passenger	Cargo	Passenger	Cargo	Passenger	Cargo	Passenger	Cargo
NCR	4	13	-	-	7	-	-	-
I	-	-	-	-	-	-	-	-
II	-	-	-	-	-	-	-	-
III	-	-	-	-	-	-	-	-
IV-A	28	1	-	-	-	-	-	-
IV-B	22	-	-	-	-	-	-	-
V	-	-	-	-	-	-	-	-
VI	14	5	-	-	-	-	-	-
VII	4	2	-	-	-	-	-	-
VIII	73	90	-	-	-	-	-	-
IX	3	-	-	-	-	-	-	-
X	5	6	-	-	-	-	-	-
XI	-	8	-	-	-	-	-	-
XII	-	12	-	-	-	-	-	-
XIII	2	20	-	-	2	-	-	-
ARMM	-	-	-	-	-	-	-	-
Total	155	157	-	-	9	-	-	-

Base on the above table, 157 out of 157 (100%) cargo ships still operated normally – are 23 container ships, 6 general cargo ships, 27 LCT ships, 0 oil tankers, 101 Roro cargo ships.

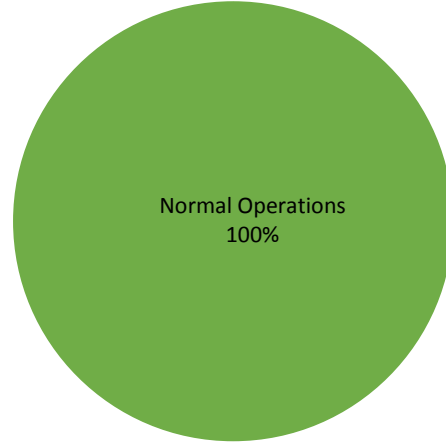
One hundred and fifty five (155) passenger ships completed their voyage – 94 conventional passenger ships, 39 RoPax ships and 22 fast craft ferry completed their operations but mostly only carried cargoes during their voyage.

Meanwhile out of the 164 passenger ships, 5% were affected by the measures adopted in view of COVID-19. These measures caused either the cancellation, delay, or uncompleted operations of 9 passenger ships.

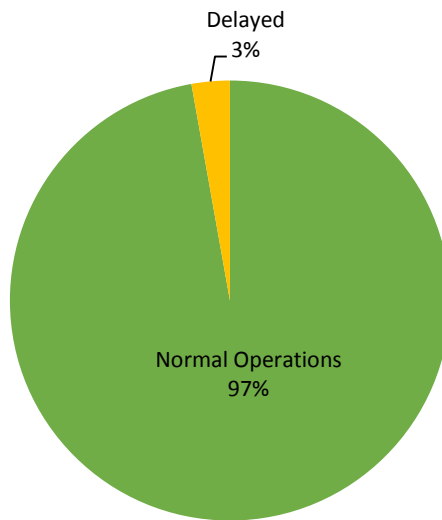
**PASSENGER
Ship Operations**



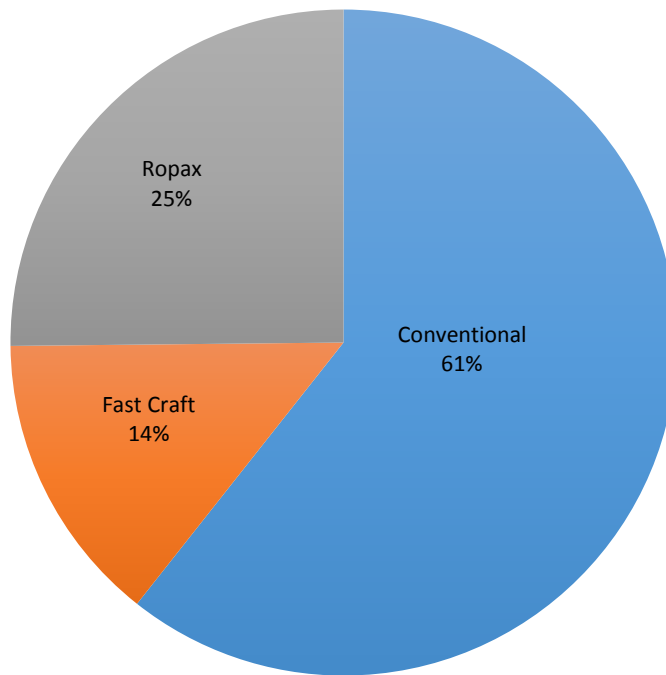
**CARGO
Ship Operations**



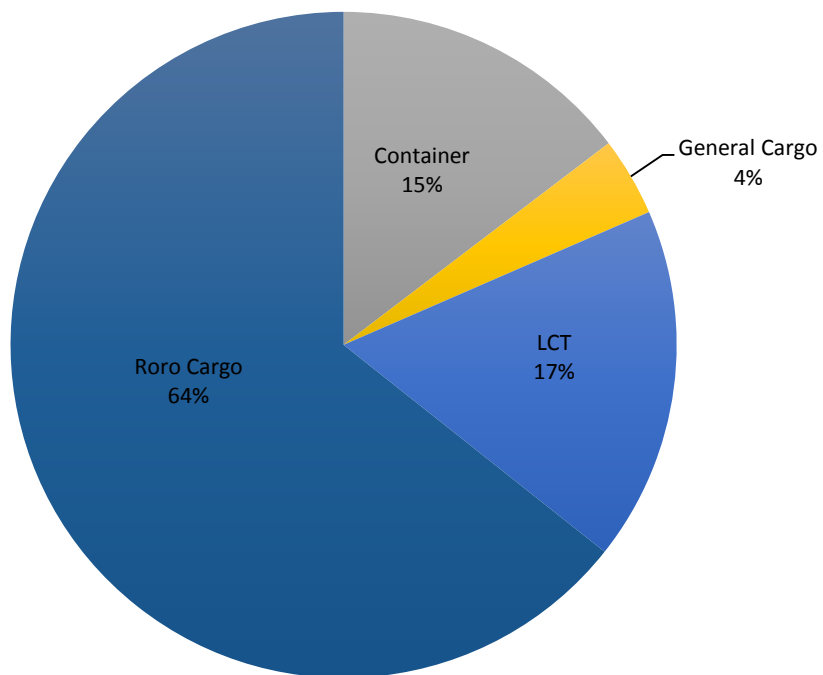
**PASSENGER and CARGO
Ship Operations**



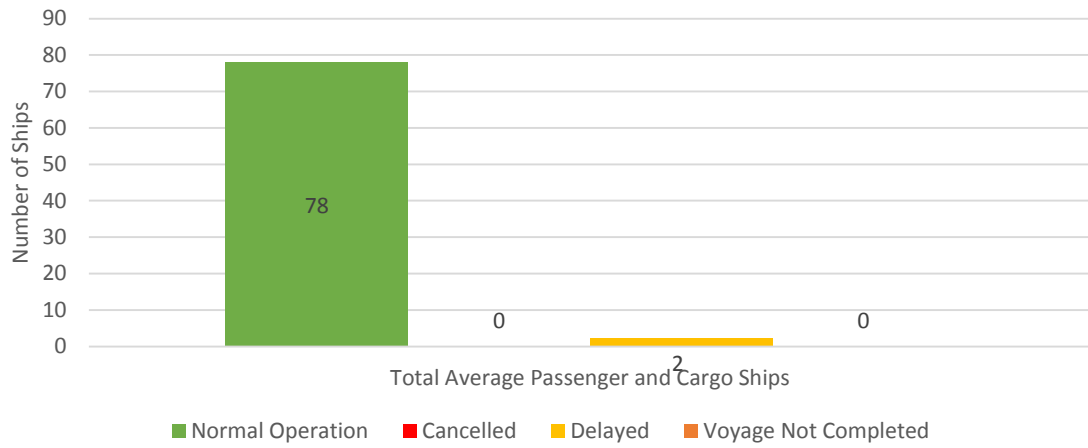
Passenger Ship Types under Normal Operations



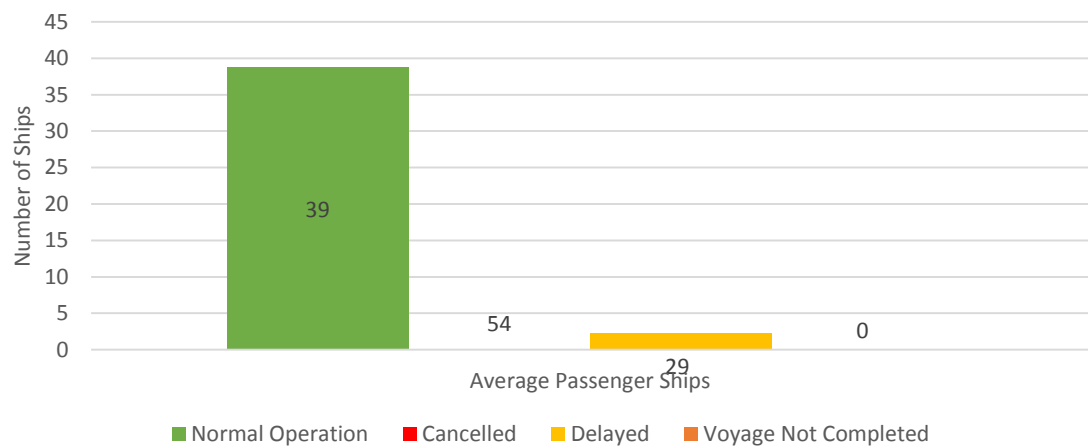
Cargo Ship Types under Normal Operations



Daily Average Passenger and Cargo Ship Operation



Daily Average Passenger Ship Operation



Daily Average Cargo Ship Operation

