



MARITIME INDUSTRY AUTHORITY
WEEKLY SUMMARY SITUATION REPORT - Summary 173
 Passenger and Cargo Shipping Operations on Jul. 07 - 13, 2023
 in areas under Alert Level 1 & 2

Data generated on Jul. 07 - 13, 2023, 3:00 PM

HIGHLIGHTS

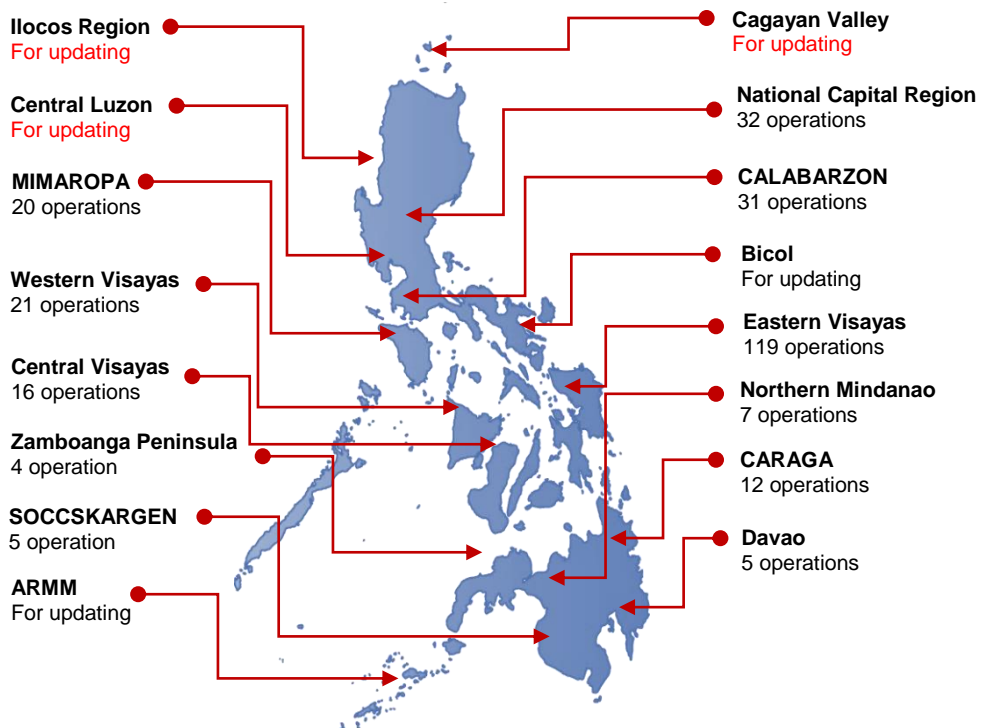
- Ninety-six percent (96%) of passenger and cargo shipping operations were completed in accordance with the ships' CPC.
- Four percent (4%) of the shipping operations were affected.
- Operations of passenger ships were more affected compared to cargo ships. 100% of the cargo shipping operations were completed under normal conditions compared to passenger ships at 93%.
- Daily average passenger and cargo ship operations are 65 completed under normal conditions, 0 cancelled trips, 3 delayed and 0 not completed voyage.
- **With cargo shipping still operational, transport of goods is assured.**

PASSENGER AND CARGO SHIPPING IN NUMBERS

Jul. 07 - 13, 2023

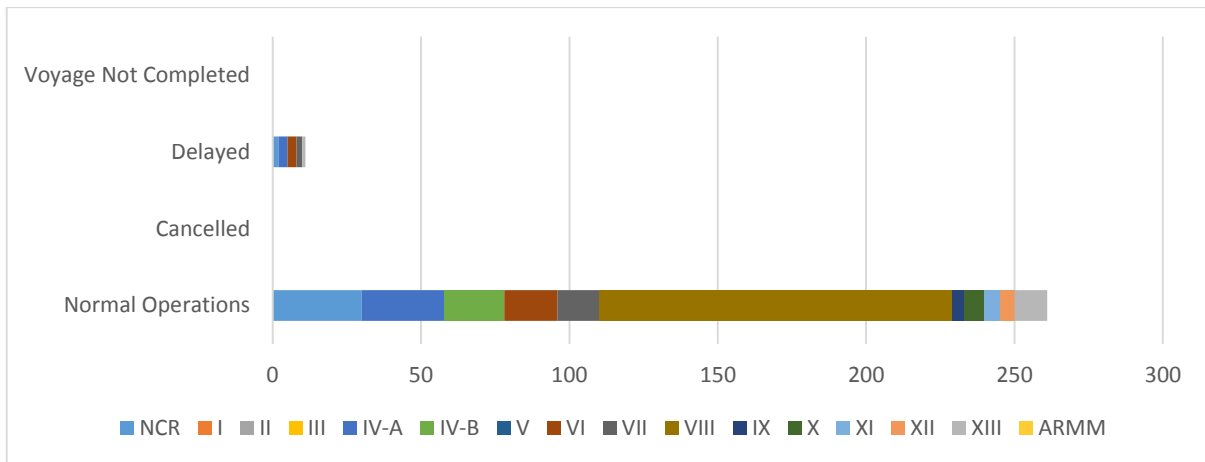
- 272** Shipping Operations Recorded
- 151** Passenger Ships Operated
- 121** Cargo Ships Operated
- 261** Ships Operated Normally
- 0** Operations Cancelled
- 11** Operations Delayed
- 0** Operation Uncompleted

**PASSENGER AND CARGO SHIPPING OPERATIONS IN THE PHILIPPINES
 IN AREAS UNDER ALERT LEVEL 1 & 2**



Total of 272 Passenger and Cargo Shipping Operations

I. STATUS OF SHIPPING OPERATIONS NATIONWIDE



On Jul. 07 - 13, 2023, there were 272 passenger and cargo shipping operations conducted wherein 261 or 96% were completed in accordance with their Certificate of Public Convenience (CPC).

Out of the 261 operations completed under normal conditions, the reported movements were mostly in the Eastern Visayas Region at 46% and National Capital Region at 11%.

Eleven (11) passenger ships or 7% encountered delays.

No shipping operations were not completed at the time of reporting, as the respective ships were still underway.

II. STATUS OF SHIPPING OPERATIONS BY CLASSIFICATION

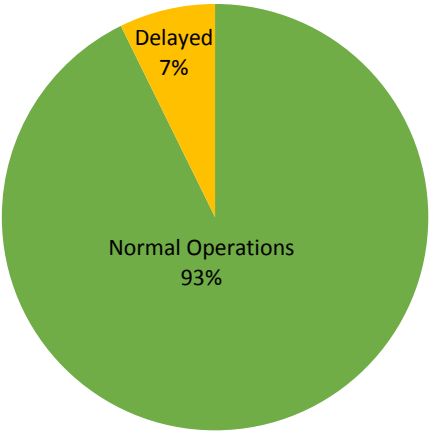
Region	Normal Operations		Cancelled		Delayed		Not Completed	
	Passenger	Cargo	Passenger	Cargo	Passenger	Cargo	Passenger	Cargo
NCR	6	24	-	-	2	-	-	-
I	-	-	-	-	-	-	-	-
II	-	-	-	-	-	-	-	-
III	-	-	-	-	-	-	-	-
IV-A	28	-	-	-	3	-	-	-
IV-B	20	-	-	-	-	-	-	-
V	-	-	-	-	-	-	-	-
VI	11	7	-	-	3	-	-	-
VII	7	7	-	-	2	-	-	-
VIII	62	57	-	-	-	-	-	-
IX	2	2	-	-	-	-	-	-
X	2	5	-	-	-	-	-	-
XI	-	5	-	-	-	-	-	-
XII	-	5	-	-	-	-	-	-
XIII	2	9	-	-	1	-	-	-
ARMM	-	-	-	-	-	-	-	-
Total	140	121	-	-	11	-	-	-

Base on the above table, 121 out of 121 (100%) cargo ships still operated normally – are 52 container ships, 23 LCT ships, 46 Roro cargo ships.

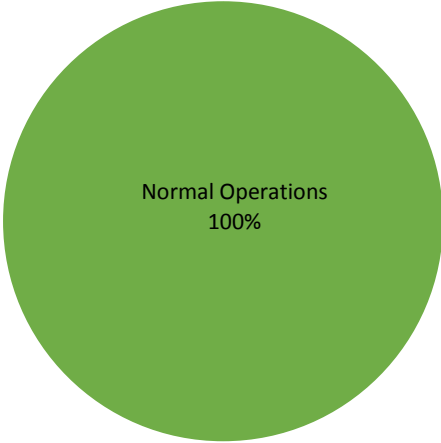
One hundred and forty (140) passenger ships completed their voyage – 77 conventional passenger ships, 39 RoPax ships and 24 fast craft ferry completed their operations but mostly only carried cargoes during their voyage.

Meanwhile out of the 151 passenger ships, 7% were affected by the measures adopted in view of COVID-19. These measures caused either the cancellation, delay, or uncompleted operations of 11 passenger ships.

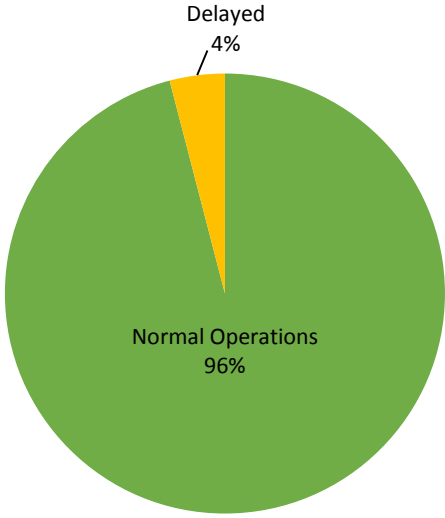
**PASSENGER
Ship Operations**



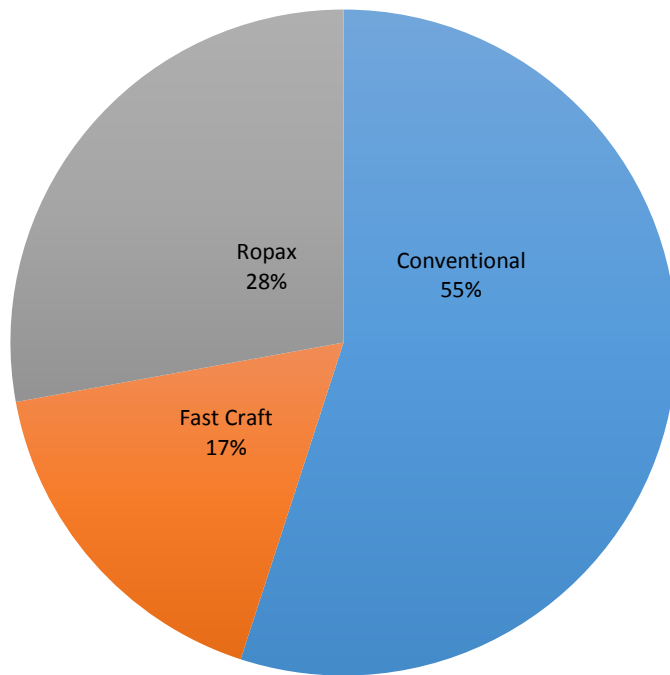
**CARGO
Ship Operations**



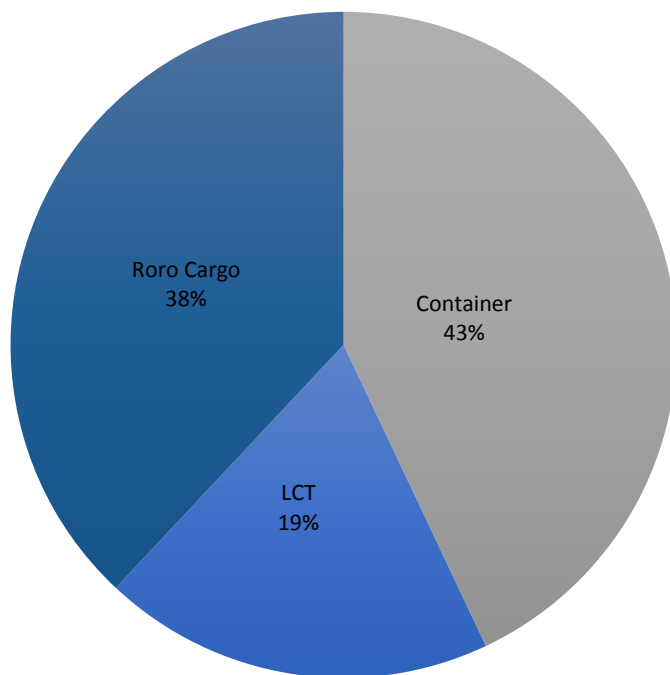
**PASSENGER and CARGO
Ship Operations**



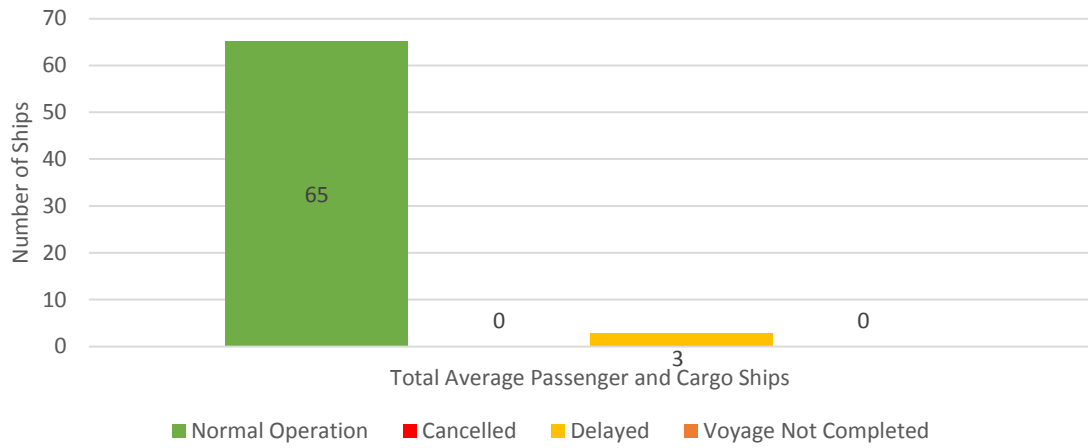
Passenger Ship Types under Normal Operations



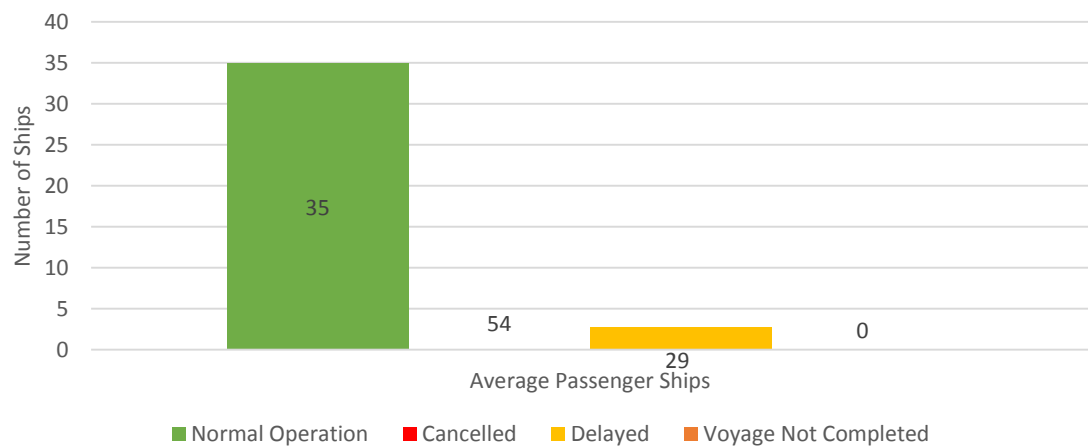
Cargo Ship Types under Normal Operations



Daily Average Passenger and Cargo Ship Operation



Daily Average Passenger Ship Operation



Daily Average Cargo Ship Operation

