



MARITIME INDUSTRY AUTHORITY
WEEKLY SUMMARY SITUATION REPORT - Summary 174
 Passenger and Cargo Shipping Operations on Jul. 14 - 20, 2023
 in areas under Alert Level 1 & 2
Data generated on Jul. 14 - 20, 2023, 3:00 PM

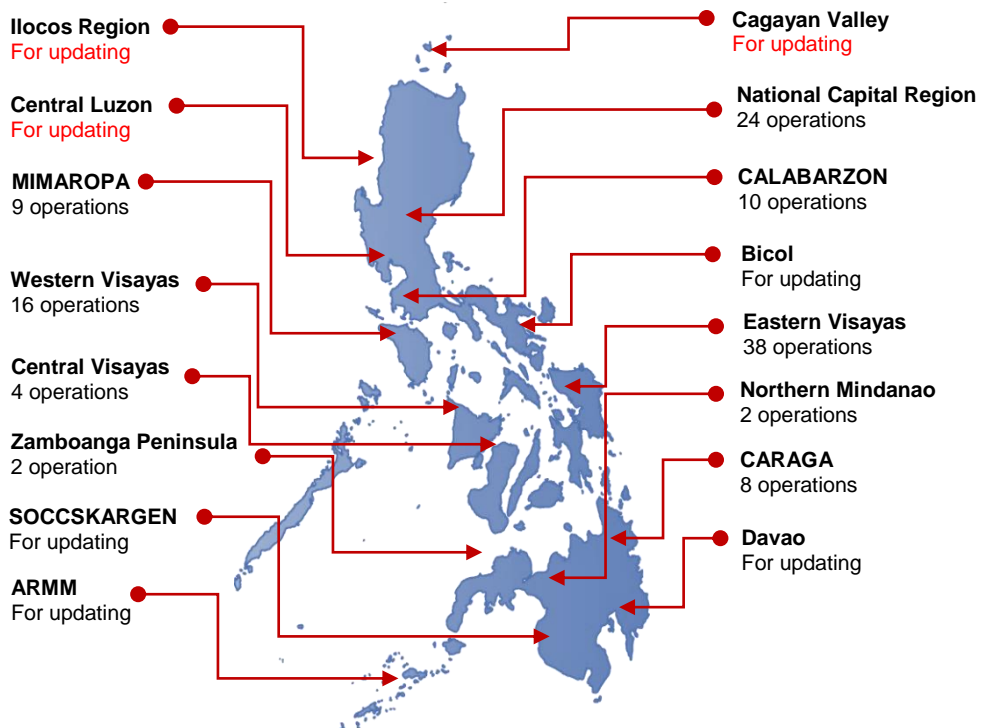
HIGHLIGHTS

- Eighty – eight percent (88%) of passenger and cargo shipping operations were completed in accordance with the ships' CPC.
- Twelve percent (12%) of the shipping operations were affected.
- Operations of passenger ships were more affected compared to cargo ships. 100% of the cargo shipping operations were completed under normal conditions compared to passenger ships at 80%.
- Daily average passenger and cargo ship operations are 25 completed under normal conditions, 0 cancelled trips, 3 delayed and 0 not completed voyage.
- **With cargo shipping still operational, transport of goods is assured.**

PASSENGER AND CARGO SHIPPING IN NUMBERS
Jul. 14 - 20, 2023

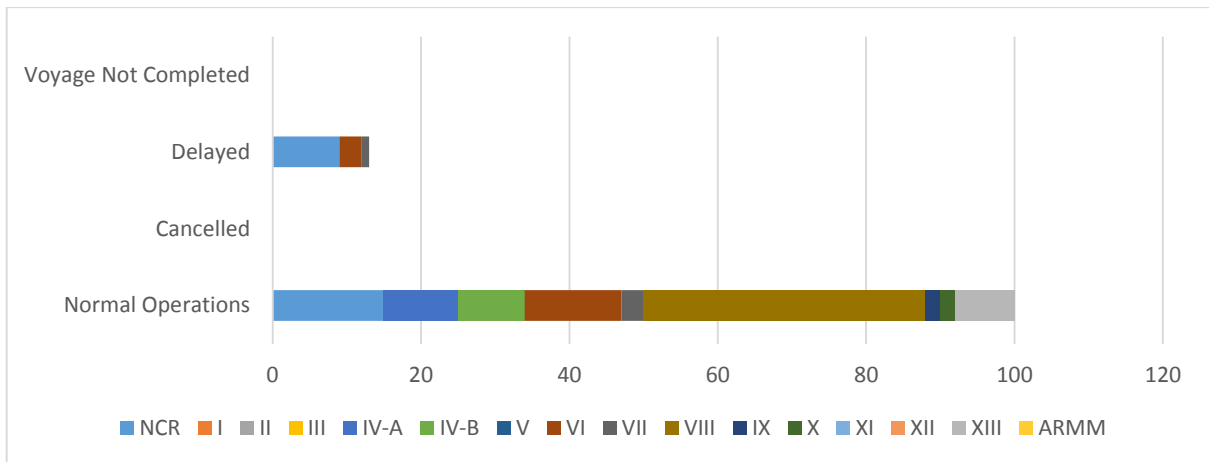
- 113** Shipping Operations Recorded
- 65** Passenger Ships Operated
- 48** Cargo Ships Operated
- 100** Ships Operated Normally
- 0** Operations Cancelled
- 13** Operations Delayed
- 0** Operation Uncompleted

**PASSENGER AND CARGO SHIPPING OPERATIONS IN THE PHILIPPINES
IN AREAS UNDER ALERT LEVEL 1 & 2**



Total of 113 Passenger and Cargo Shipping Operations

I. STATUS OF SHIPPING OPERATIONS NATIONWIDE



On Jul. 14 - 20, 2023, there were 113 passenger and cargo shipping operations conducted wherein 100 or 88% were completed in accordance with their Certificate of Public Convenience (CPC).

Out of the 100 operations completed under normal conditions, the reported movements were mostly in the Eastern Visayas Region at 38% and National Capital Region at 15%.

Thirteen (13) passenger ships or 20% encountered delays.

No shipping operations were not completed at the time of reporting, as the respective ships were still underway.

II. STATUS OF SHIPPING OPERATIONS BY CLASSIFICATION

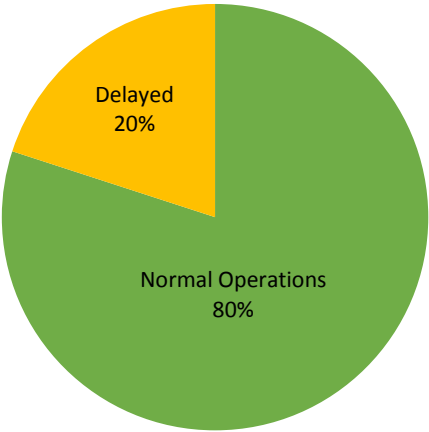
Region	Normal Operations		Cancelled		Delayed		Not Completed	
	Passenger	Cargo	Passenger	Cargo	Passenger	Cargo	Passenger	Cargo
NCR	6	9	-	-	9	-	-	-
I	-	-	-	-	-	-	-	-
II	-	-	-	-	-	-	-	-
III	-	-	-	-	-	-	-	-
IV-A	10	-	-	-	-	-	-	-
IV-B	9	-	-	-	-	-	-	-
V	-	-	-	-	-	-	-	-
VI	9	4	-	-	3	-	-	-
VII	1	2	-	-	1	-	-	-
VIII	16	22	-	-	-	-	-	-
IX	-	2	-	-	-	-	-	-
X	1	1	-	-	-	-	-	-
XI	-	-	-	-	-	-	-	-
XII	-	-	-	-	-	-	-	-
XIII	-	8	-	-	-	-	-	-
ARMM	-	-	-	-	-	-	-	-
Total	52	48	-	-	13	-	-	-

Base on the above table, 48 out of 48 (100%) cargo ships still operated normally – are 18 container ships, 7 LCT ships, 23 Roro cargo ships.

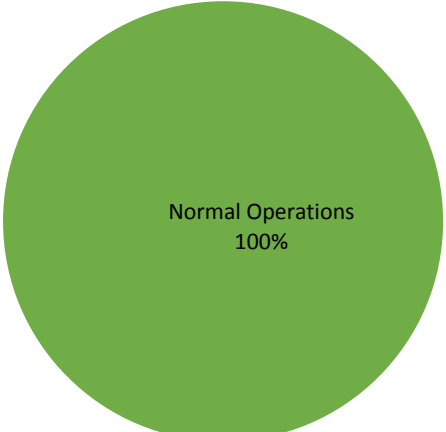
Fifty – two (52) passenger ships completed their voyage – 22 conventional passenger ships, 24 RoPax ships and 6 fast craft ferry completed their operations but mostly only carried cargoes during their voyage.

Meanwhile out of the 65 passenger ships, 20% were affected by the measures adopted in view of COVID-19. These measures caused either the cancellation, delay, or uncompleted operations of 13 passenger ships.

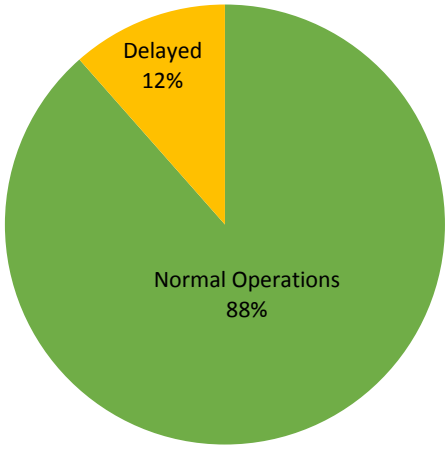
**PASSENGER
Ship Operations**



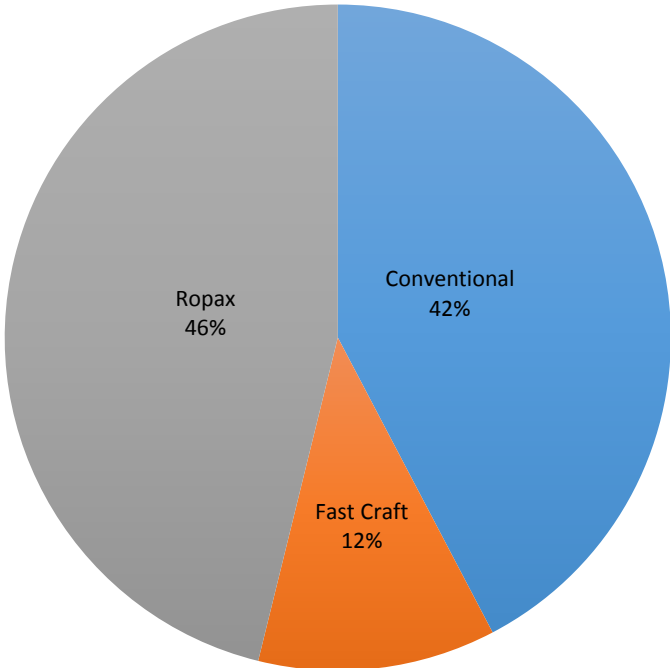
**CARGO
Ship Operations**



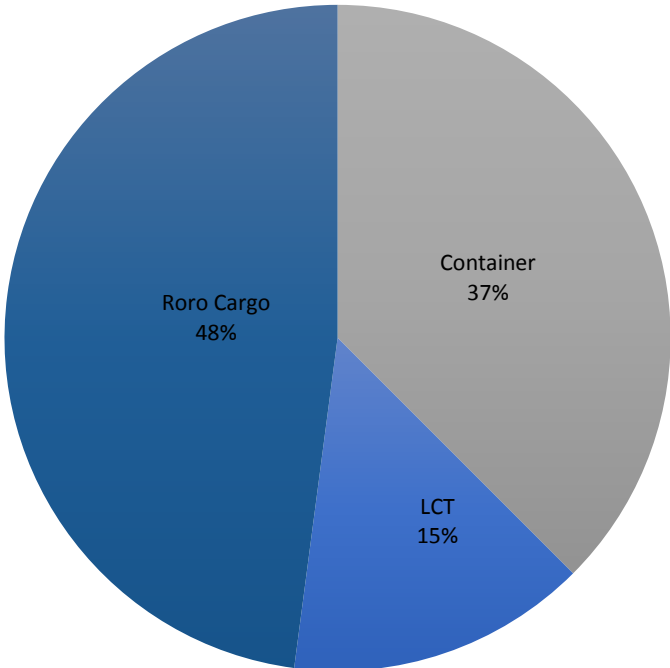
**PASSENGER and CARGO
Ship Operations**



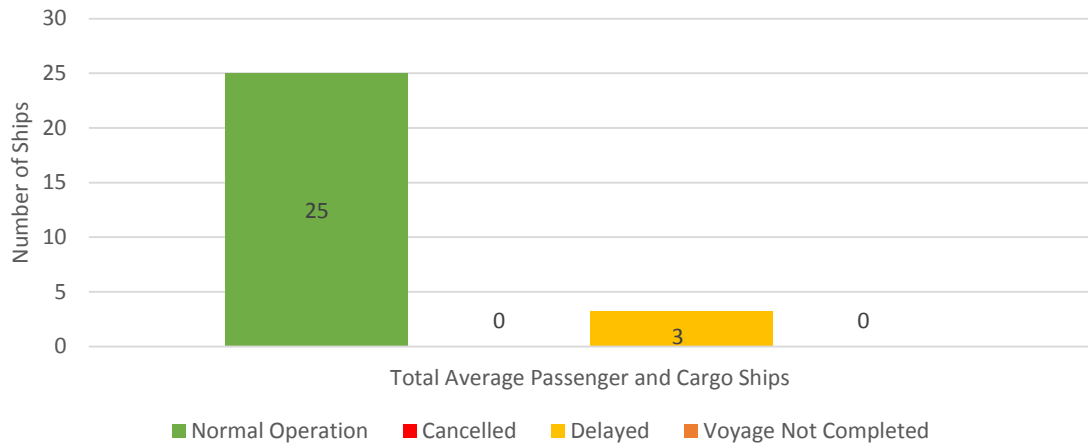
Passenger Ship Types under Normal Operations



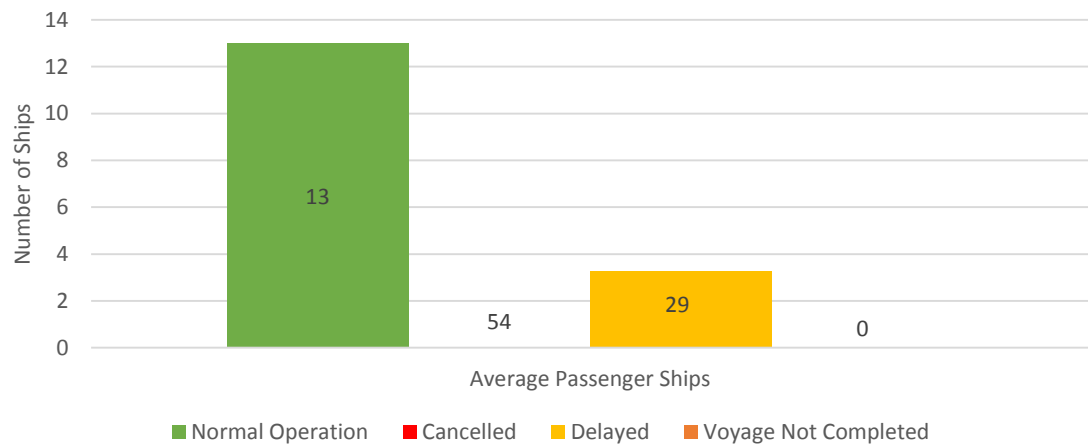
Cargo Ship Types under Normal Operations



Daily Average Passenger and Cargo Ship Operation



Daily Average Passenger Ship Operation



Daily Average Cargo Ship Operation

