



MARITIME INDUSTRY AUTHORITY
WEEKLY SUMMARY SITUATION REPORT - Summary 175
 Passenger and Cargo Shipping Operations on Jul. 21-27, 2023
 in areas under Alert Level 1 & 2
Data generated on Jul. 21-27, 2023, 3:00 PM

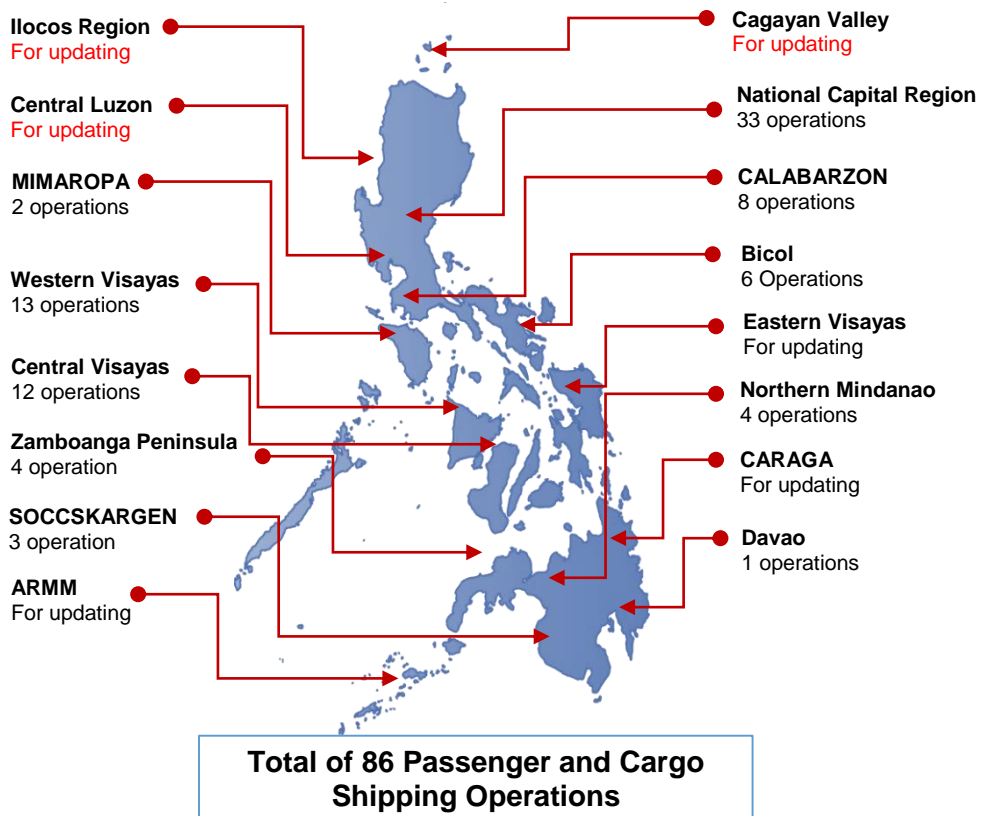
HIGHLIGHTS

- Eighty – three percent (83%) of passenger and cargo shipping operations were completed in accordance with the ships' CPC.
- Seventeen percent (17%) of the shipping operations were affected.
- Operations of passenger ships were more affected compared to cargo ships. 93% of the cargo shipping operations were completed under normal conditions compared to passenger ships at 65%.
- Daily average passenger and cargo ship operations are 18 completed under normal conditions, 0 cancelled trips, 4 delayed and 0 not completed voyage.
- **With cargo shipping still operational, transport of goods is assured.**

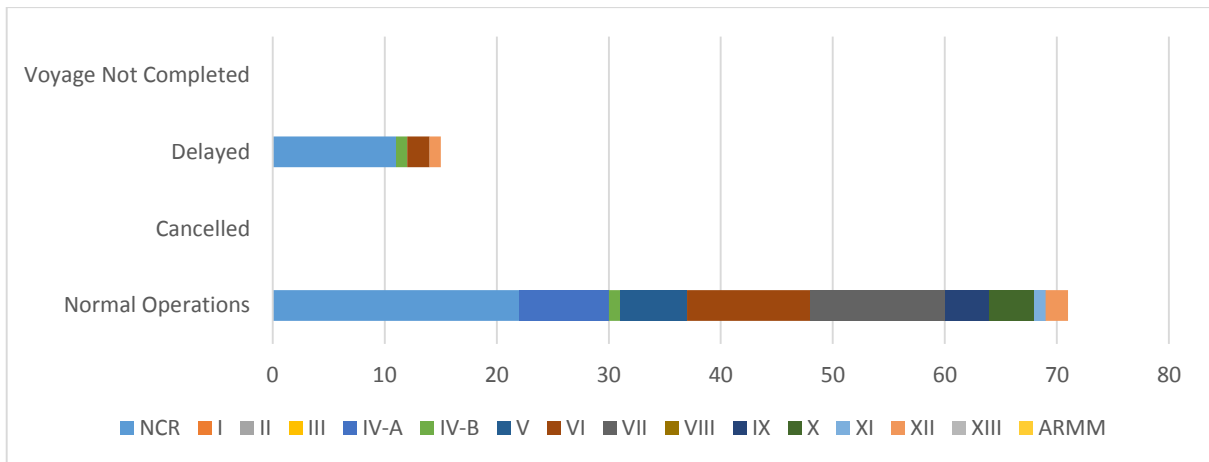
PASSENGER AND CARGO SHIPPING IN NUMBERS
 Jul. 21-27, 2023

- 86** Shipping Operations Recorded
- 31** Passenger Ships Operated
- 55** Cargo Ships Operated
- 71** Ships Operated Normally
- 0** Operations Cancelled
- 15** Operations Delayed
- 0** Operation Uncompleted

**PASSENGER AND CARGO SHIPPING OPERATIONS IN THE PHILIPPINES
 IN AREAS UNDER ALERT LEVEL 1 & 2**



I. STATUS OF SHIPPING OPERATIONS NATIONWIDE



On Jul. 21-27, 2023, there were 86 passenger and cargo shipping operations conducted wherein 71 or 83% were completed in accordance with their Certificate of Public Convenience (CPC).

Out of the 71 operations completed under normal conditions, the reported movements were mostly in the National Capital Region Region at 31% and Central Visayas Region at 17%.

Eleven (11) passenger ships or 35% encountered delays.

No shipping operations were not completed at the time of reporting, as the respective ships were still underway.

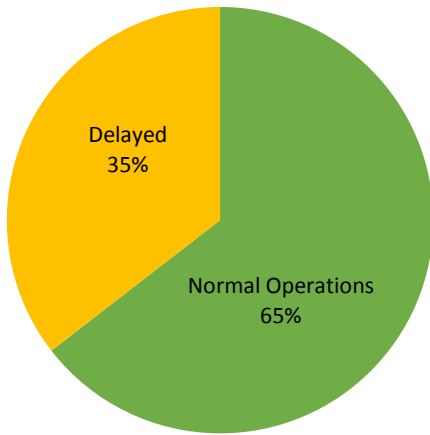
II. STATUS OF SHIPPING OPERATIONS BY CLASSIFICATION

Region	Normal Operations		Cancelled		Delayed		Not Completed	
	Passenger	Cargo	Passenger	Cargo	Passenger	Cargo	Passenger	Cargo
NCR	5	17	-	-	8	3	-	-
I	-	-	-	-	-	-	-	-
II	-	-	-	-	-	-	-	-
III	-	-	-	-	-	-	-	-
IV-A	8	-	-	-	-	-	-	-
IV-B	1	-	-	-	1	-	-	-
V	-	6	-	-	-	-	-	-
VI	5	6	-	-	2	-	-	-
VII	1	11	-	-	-	-	-	-
VIII	-	-	-	-	-	-	-	-
IX	-	4	-	-	-	-	-	-
X	-	4	-	-	-	-	-	-
XI	-	1	-	-	-	-	-	-
XII	-	2	-	-	-	1	-	-
XIII	-	-	-	-	-	-	-	-
ARMM	-	-	-	-	-	-	-	-
Total	20	51	-	-	11	4	-	-

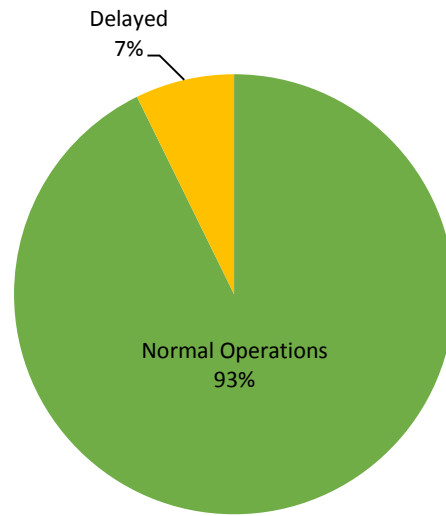
Base on the above table, 51 out of 55 (93%) cargo ships still operated normally – are 33 container ships, 5 general cargo ships, 1 oil tanker, 10 Roro cargo ships.

Twenty (20) passenger ships completed their voyage – 6 conventional passenger ships, 14 RoPax ships and 0 fast craft ferry completed their operations but mostly only carried cargoes during their voyage.

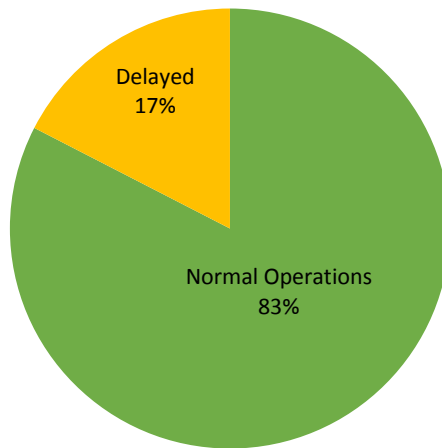
PASSENGER Ship Operations



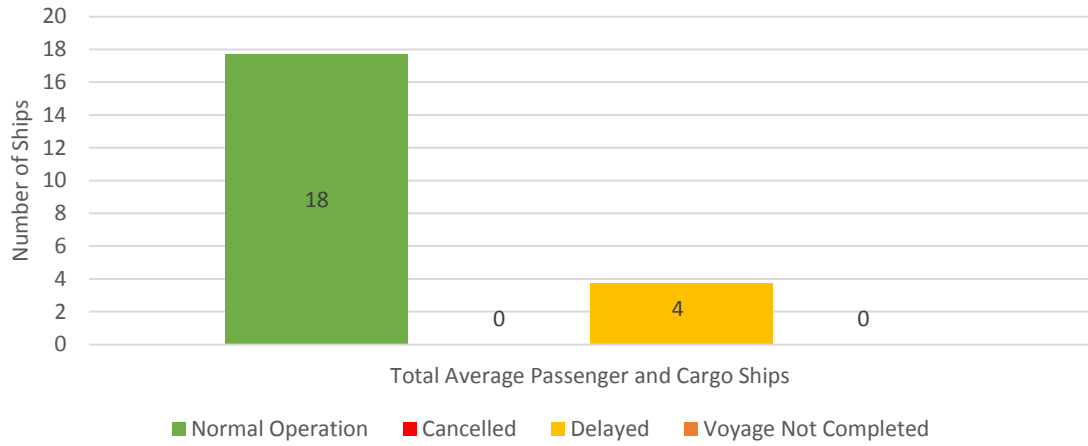
CARGO Ship Operations



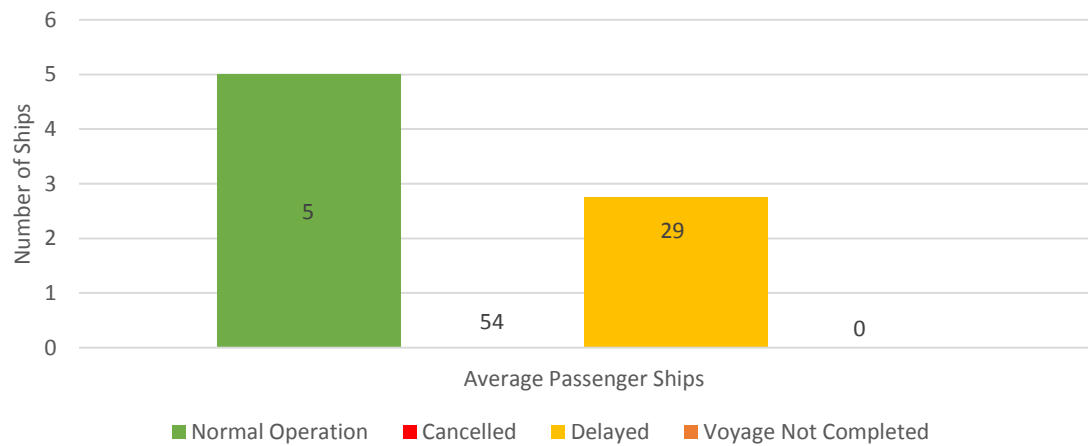
PASSENGER and CARGO Ship Operations



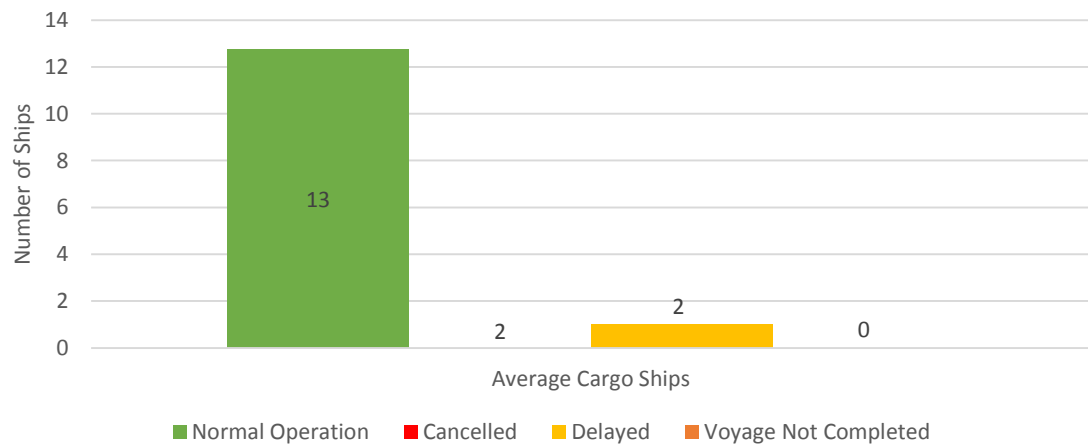
Daily Average Passenger and Cargo Ship Operation



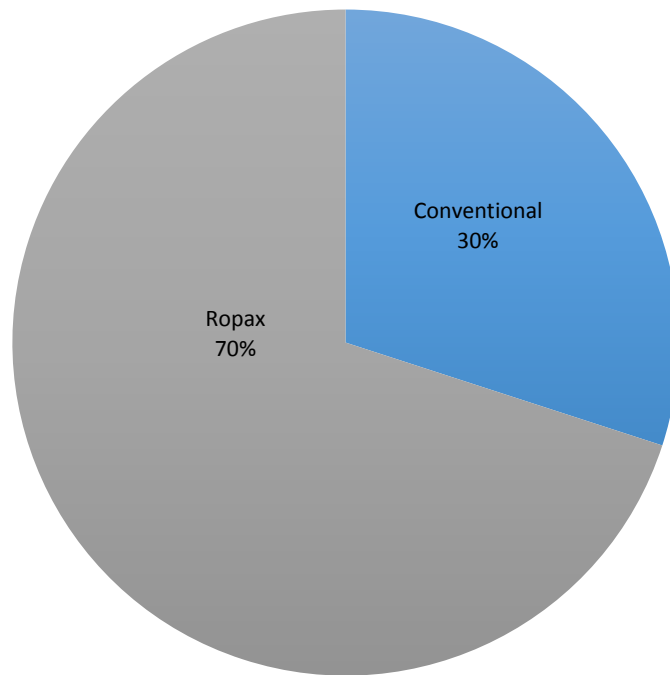
Daily Average Passenger Ship Operation



Daily Average Cargo Ship Operation



Passenger Ship Types under Normal Operations



Cargo Ship Types under Normal Operations

