



**MARITIME INDUSTRY AUTHORITY
WEEKLY SUMMARY SITUATION REPORT - Summary 176**

Passenger and Cargo Shipping Operations on Jul. 28 - Aug. 03, 2023
in areas under Alert Level 1 & 2

Data generated on Jul. 28 - Aug. 03, 2023, 3:00 PM

HIGHLIGHTS

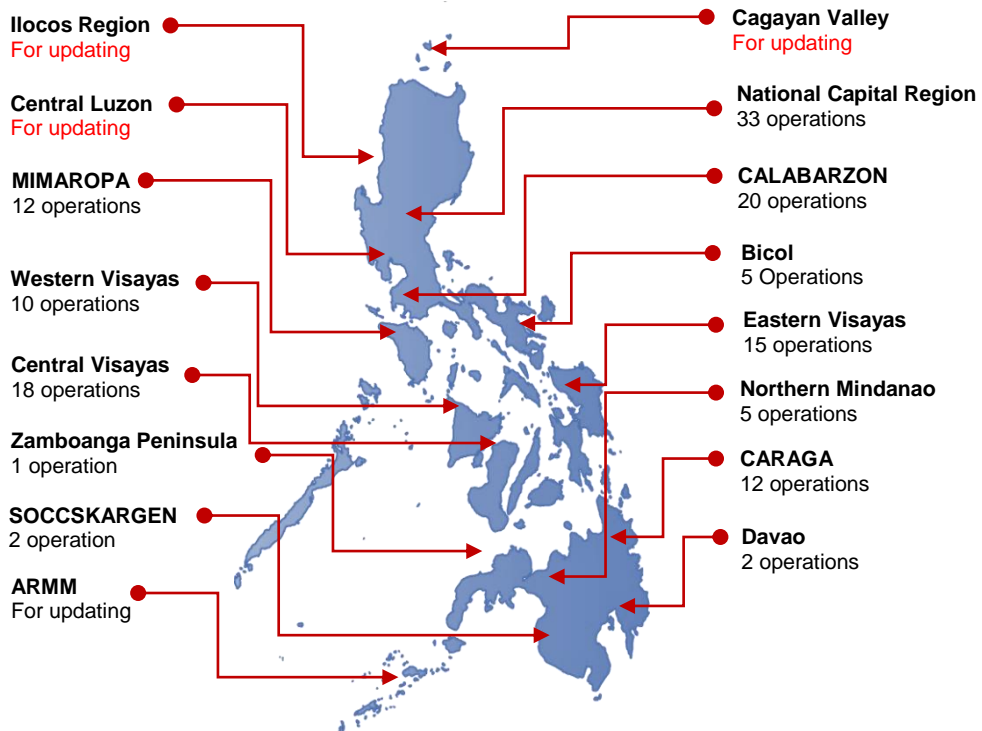
- Ninety percent (90%) of passenger and cargo shipping operations were completed in accordance with the ships' CPC.
- Ten percent (10%) of the shipping operations were affected.
- Operations of passenger ships were more affected compared to cargo ships. 100% of the cargo shipping operations were completed under normal conditions compared to passenger ships at 74%.
- Daily average passenger and cargo ship operations are 30 completed under normal conditions, 4 cancelled trips, 3 delayed and 0 not completed voyage.
- **With cargo shipping still operational, transport of goods is assured.**

PASSENGER AND CARGO SHIPPING IN NUMBERS

Jul. 28 - Aug. 03, 2023

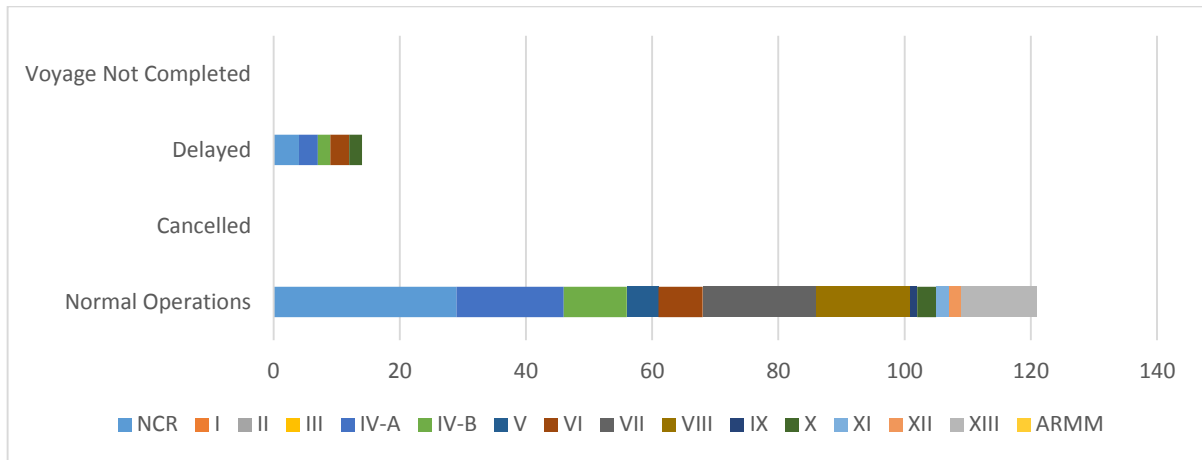
- 135** Shipping Operations Recorded
- 54** Passenger Ships Operated
- 81** Cargo Ships Operated
- 121** Ships Operated Normally
- 0** Operations Cancelled
- 14** Operations Delayed
- 0** Operation Uncompleted

**PASSENGER AND CARGO SHIPPING OPERATIONS IN THE PHILIPPINES
IN AREAS UNDER ALERT LEVEL 1 & 2**



Total of 135 Passenger and Cargo Shipping Operations

I. STATUS OF SHIPPING OPERATIONS NATIONWIDE



On Jul. 28 - Aug. 03, 2023, there were 135 passenger and cargo shipping operations conducted wherein 121 or 90% were completed in accordance with their Certificate of Public Convenience (CPC).

Out of the 121 operations completed under normal conditions, the reported movements were mostly in the National Capital Region at 24% and Central Visayas Region at 15%.

Fourteen (14) passenger ships or 26% encountered delays.

No shipping operations were not completed at the time of reporting, as the respective ships were still underway.

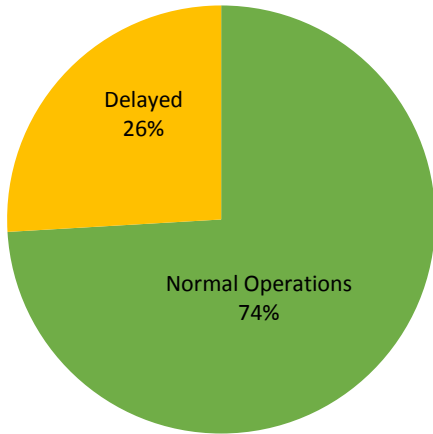
II. STATUS OF SHIPPING OPERATIONS BY CLASSIFICATION

Region	Normal Operations		Cancelled		Delayed		Not Completed	
	Passenger	Cargo	Passenger	Cargo	Passenger	Cargo	Passenger	Cargo
NCR	8	21	-	-	4	-	-	-
I	-	-	-	-	-	-	-	-
II	-	-	-	-	-	-	-	-
III	-	-	-	-	-	-	-	-
IV-A	12	5	-	-	3	-	-	-
IV-B	10	-	-	-	2	-	-	-
V	-	5	-	-	-	-	-	-
VI	3	4	-	-	3	-	-	-
VII	1	17	-	-	-	-	-	-
VIII	6	9	-	-	-	-	-	-
IX	-	1	-	-	-	-	-	-
X	-	3	-	-	2	-	-	-
XI	-	2	-	-	-	-	-	-
XII	-	2	-	-	-	-	-	-
XIII	-	12	-	-	-	-	-	-
ARMM	-	-	-	-	-	-	-	-
Total	40	81	-	-	14	-	-	-

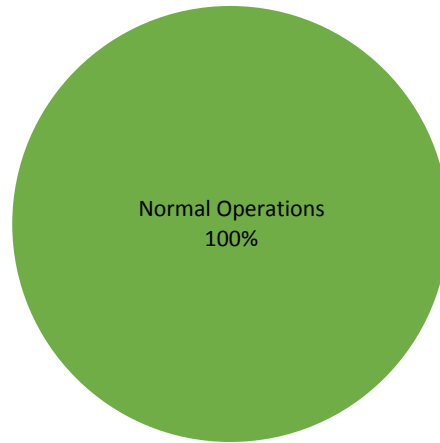
Base on the above table, 81 out of 81 (100%) cargo ships still operated normally – are 38 container ships, 8 LCT ships, 23 Roro cargo ships.

Forty (40) passenger ships completed their voyage – 24 conventional passenger ships, 14 RoPax ships and 2 fast craft ferry completed their operations but mostly only carried cargoes during their voyage.

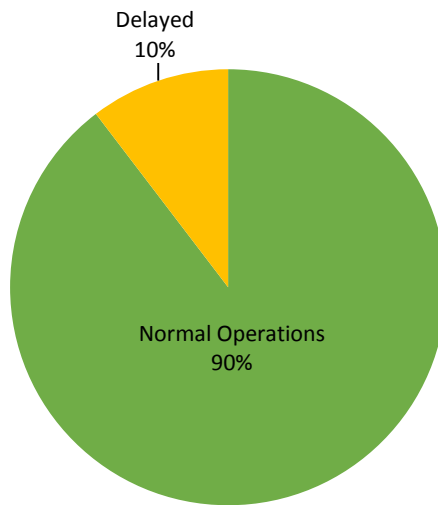
**PASSENGER
Ship Operations**



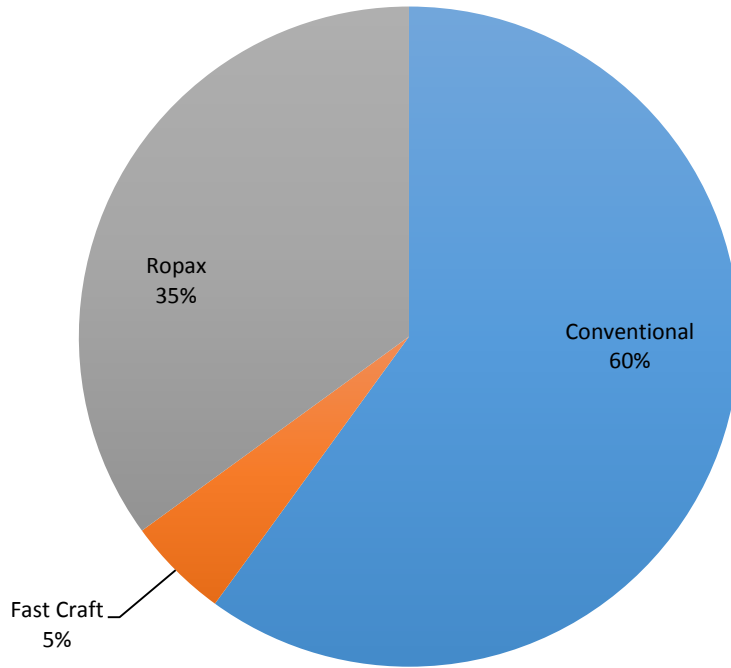
**CARGO
Ship Operations**



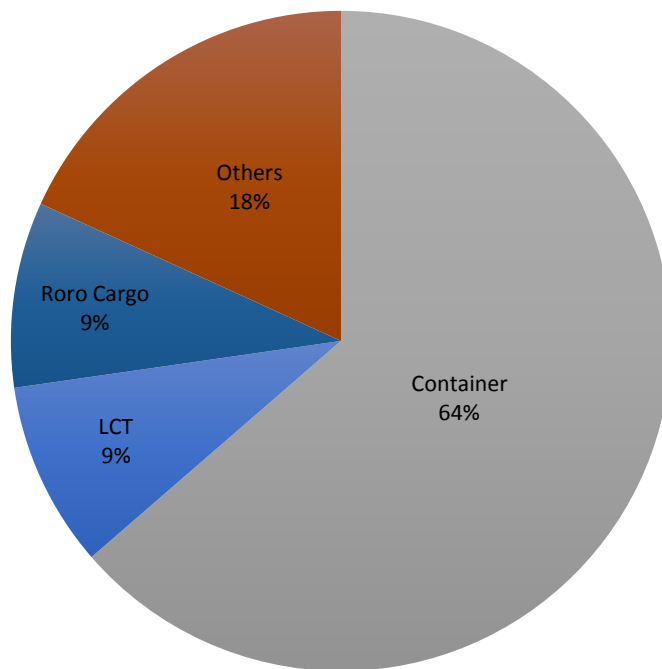
**PASSENGER and CARGO
Ship Operations**



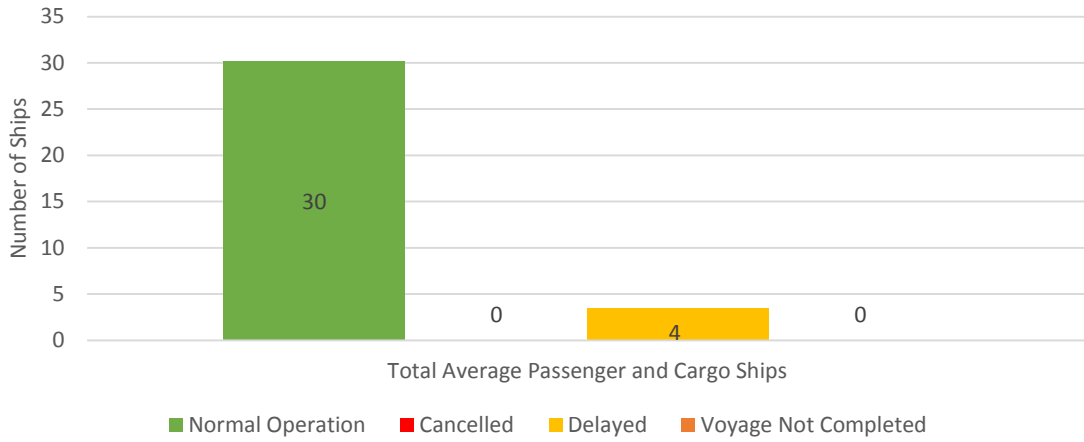
Passenger Ship Types under Normal Operations



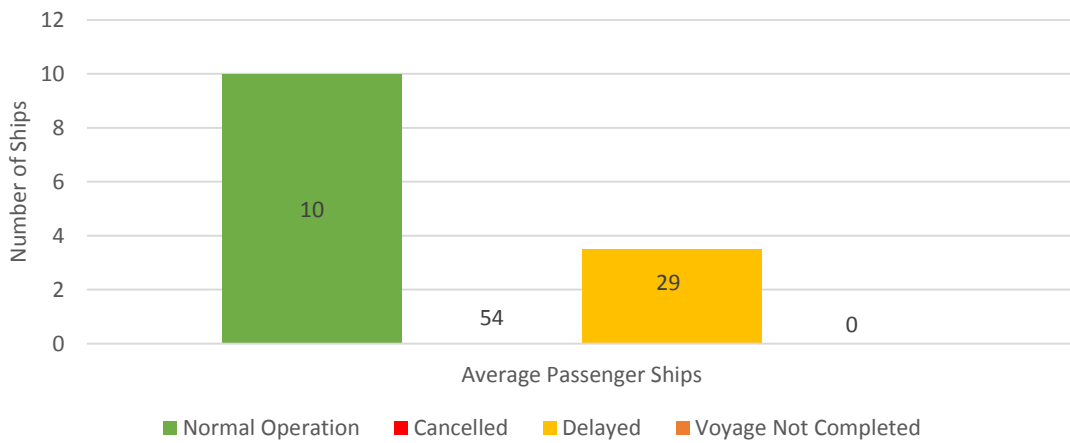
Cargo Ship Types under Normal Operations



Daily Average Passenger and Cargo Ship Operation



Daily Average Passenger Ship Operation



Daily Average Cargo Ship Operation

